

# BICHLER

SIMMENTALS & RED ANGUS



*Join us* **Nov. 16, 2020**  
1 P.M. - AT THE RANCH - LINTON, N.D.

**40 Bulls • 40 Females**  
SIMMENTAL • SIMANGUS™ • RED ANGUS

# BICHLER

## SIMMENTALS & RED ANGUS



*Welcome* to our 16<sup>th</sup> annual production sale. What a year it has been. We really enjoyed our new calving season and how much labor we saved by changing our management. The cows stayed in great shape all summer, and the calves are performing well. We decided to no longer creep feed because we have a larger window to develop the bulls, so please consider this when you are looking at weights.

We have done our best to bring you a great set of cattle this year. This set of bulls has never been offered for sale. We purposely held them for this transition year so rest assured they are not left overs. The quality we offer and that you have come to expect is represented in this offering.

The cattle in this sale were managed a bit different. We were able to develop them more slowly, and they spent the summer on pasture with no supplement. We are very pleased with how they have come along, and they will be in excellent shape going into winter. Since the bulls are older and risk of injury is much greater here, we will be delivering immediately after the sale. The bulls will all complete a breeding soundness exam prior to the sale, and we are offering a new policy regarding breeding guarantees. Make sure to look at the sale terms and conditions page to familiarize yourself with the changes.

Our sale is a video-only sale; no cattle will be brought through a ring. This method has been a great way to have the sale at the ranch without building a new facility. The advantage is no cattle will be moving during the sale, so you are free to view them as long as you like. They will be right out the door on sale day if you need a second look.

Lastly, we would like to say thank you. Thank you to all of our loyal customers and friends who are supporting us through this major change. We could not be in this business without your support, and we appreciate your interest and your belief in our program. We look forward to visiting with you about our offering. See you at the ranch Nov. 16!

- **Doug and Maria Bichler**, Bichler Simmentals and Red Angus



# BICHLER

## SIMMENTALS & RED ANGUS

130 83<sup>rd</sup> Street SE • Linton, N.D. 58552

**Preferred route:** Travel south of Linton, N.D., on Hwy 83 and turn west at 82nd Street. Travel for five miles and turn south at 2nd Ave. Travel for one mile and turn west at the Bichler Simmentals sign. Travel for three-quarter of a mile; the sale will be held in the red and white barn.

**Secondary route:** Travel west of Linton, N.D., on Hwy 13 and turn south at 3rd Ave. Travel for one mile and turn west at 80th Street. Travel for one mile and turn south at 2nd Ave. Travel for three miles and turn west at the Bichler Simmentals sign. Travel for three-quarter of a mile; the sale will be held in the red and white barn.

## Sale Day Phones:

**Doug Bichler** .....701 226-4068  
**Maria Bichler** .....701 340-9749  
**Paul Bichler** .....701 226-5861

**Sale Location:** Bichler Ranch, see directions above.

**Sale Terms:** All cattle sell under the Suggested Sale Terms & Conditions of the American Simmental Association. Available upon request.

**Phone Bids:** Phone bid services will be available if an interested party cannot attend the sale. Please leave your bid with any of the sale staff listed in the catalog and we will do our best to accommodate you. We will try and fulfill your request to the best of our ability and no "running" of the bid will be allowed.

**Accommodations:** Motel rooms are available at Don's Motel, 701 254-5457, or the Cobblestone Inn & Suites, 701 254-5734. Both motels are located just off of Hwy. 83 in Linton.

**Announcements:** Announcements made sale day and from the auction block take precedence over printed materials in the catalog or other printed material associated with the sale. Anyone attending the sale does so at their own risk. Any of the sale staff will not be responsible for any personal injury for attending this sale. We are not responsible for any accidents, damaged, or stolen items on sale day.

We reserve the right to collect up to 100 units of semen on any of the bulls, for in-herd use. The semen will be collected at the seller's expense and the buyer's convenience. Please contact us if you have any questions.

**Breeding Guarantee:** All bulls in this sale have passed a breeding soundness exam by Dr. Lyle Kenner of Northern Veterinary Service in Linton. New to our program this year is our breeding guarantee. We will cover injury or infertility of your new bull(s) that would prevent them from breeding through the first 60 days of the breeding season. To be eligible, bulls must bring \$3,000 or more. A flat rate salvage value of \$1,500 will be deducted from the purchase price and either a replacement (if available) or sale credit at the next sale will be provided. Management issues, such as poor nutrition or frozen scrotums, will not be eligible. We ask that customers make us aware of issues as soon as they occur, and we reserve the right to request a veterinarian assessment.

## Sale Personnel

**Tracy Harl**, Auctioneer ..... 402 469-3852  
 Wellington, Colo.  
**Scott Ressler**, Ringman ..... 701 391-7310  
 North Dakota Stockmen's Association  
**Kris Petersen**, Ringman ..... 701 339-0305  
 Special Assignment  
**Tony Heins**, Ringman ..... 701 400-4435  
 Cattle Business Weekly  
**Russ Danielson** ..... 701 261-2742  
 American Simmental Association

**Health Program:** Bulls and heifers were calfhood vaccinated with Bovisheild Gold 5, Oneshot Ultra, 7-way Somnus, and injected with Dectomax. At weaning, calves were given Bovisheild Gold 5, 7-way Somnus and One Shot, boosters were given of the Bovishield Gold 5, and 7-way Somnus and they were poured with Clean-Up II. The bulls received Fusogard at turn-out.

**Hauling:** We would appreciate sale cattle taken home on sale day. If you cannot take them home on sale day, please make arrangements prior to the sale to coordinate hauling.

**Insurance:** Insuring your bull or heifer is an affordable way to cover yourself in case of fatality. In many cases the full purchase price can be recovered with a simple policy. Insurance will be available on sale day.

**EPD Information:** Please note that EPDs may change from the time the sale catalog is printed to the time the registration paper is transferred.

**Sale Format:** We will be conducting a video auction. The cattle will not go through the sale ring. Instead, we will have all the lots on video. Videos of the bulls and females will be played as each one sells. The cattle will be penned near the sale barn for evaluation on sale day.

**DVAuction**  
 Broadcasting Real-Time Auctions  
 Never Miss An Auction Again!  
 Watch & Bid online for FREE!

The sale will be  
 broadcast on  
 DVAuction.





**LOT 1**

**1**

## BCLR IMPERIAL G101

ASA#: 3659627  
Homo Polled

Breed: PB SM  
Non-Diluted

DOB: 3/18/19

IR IMPERIAL B772

IR IMPERIAL D948

IR MS DUAL FOCUS W086

WS BEEF MAKER R13

BCLR MISS BF MKR Y101

BCLR MISS SHAGGY W903

	IND	Ratio
Doc.	1	
BW	90	98
205	702	96

	CE	BW	WW	YW	ADG	MCE	Milk	MWW	Stay	Doc	YG	Marb	REA	API	TI
EPDs:	14.7	0.7	74.8	110.9	0.23	8.3	24.2	61.5	18.4	14.1	-0.46	0.36	0.83	156.5	85.5
Rank:	10	30	55	50	50	15	50	50	30	15	45	5	65	5	10

A phenotypic standout that is attractive and stout with a great disposition. Backed by one of our most consistent cow families and the highest API bull in the offering. We think he has herd bull potential, and he is the obvious choice to begin our offering!

**3**

## BCLR LIL JOHN G703

ASA#: 3659576  
Homo Polled

Breed: PB SM  
Non-Diluted

DOB: 2/19/19

KWA FLYF RED MOUNTAIN 16Z

KS LITTLE JOHN C85

KS ANISTON A707

CDI AMBITION 255C

BCLR MISS ZADA E703

KS ZADA Z887

	IND	Ratio
Doc.	1	
BW	77	92
205	666	91

	CE	BW	WW	YW	ADG	MCE	Milk	MWW	Stay	Doc	YG	Marb	REA	API	TI
EPDs:	11.2	2.1	65.5	96.2	0.19	6.9	31	63.7	17.1	17.2	-0.3	0.08	0.34	126.9	70.7
Rank:	45	60	90	85	85	30	10	40	50	2	99	45	99	55	75

Larger framed outcross bull from our Zada cow family.

**2**

## BCLR IMPERIAL G254

ASA#: 3659647  
Homo Polled

Breed: PB SM  
Non-Diluted

DOB: 3/14/19

IR IMPERIAL B772

IR IMPERIAL D948

IR MS DUAL FOCUS W086

CDI AUTHORITY 77X

BCLR MISS AUTHORITY Z254

BCLR MISS IVANNA W908

	IND	Ratio
Doc.	1	
BW	89	97
205	739	101

	CE	BW	WW	YW	ADG	MCE	Milk	MWW	Stay	Doc	YG	Marb	REA	API	TI
EPDs:	15.6	-1.1	65.1	96.7	0.2	7.2	25.1	57.6	17.3	15.9	-0.38	0.33	0.68	152.8	80.9
Rank:	4	10	90	85	75	25	40	70	45	5	85	10	90	10	25

Dark red with muscle and depth of rib backed by a great-uddered Authority daughter.

**4**

**BICHLER**  
SIMMENTALS & RED ANGUS



4

**BCLR LIL JOHN G701**ASA#: 3659575  
Homo PolledBreed: PB SM  
Non-Diluted

DOB: 2/26/19

**KWA FLYF RED MOUNTAIN 16Z****KS LITTLE JOHN C85****KS ANISTON A707****CDI AMBITION 255C****BCLR MISS ZADA E701****KS ZADA Z887**

	IND	Ratio
Doc.	3	
BW	88	96
205	558	77

	CE	BW	WW	YW	ADG	MCE	Milk	MWW	Stay	Doc	YG	Marb	REA	API	TI
EPDs:	9.5	-0.1	63.7	91.2	0.17	5.8	31.7	63.5	17.4	15.3	-0.33	0.03	0.43	125.3	70.7
Rank:	70	20	95	95	95	50	5	40	45	10	99	60	99	60	75

Very correct and attractive made bull. Out of a Zada daughter but was orphaned shortly after turnout which reflects his poor weaning weight.

**LOT 5**

5

**BCLR LIL JOHN G723**ASA#: 3659583  
Homo PolledBreed: PB SM  
Non-Diluted

DOB: 3/4/19

**KWA FLYF RED MOUNTAIN 16Z****KS LITTLE JOHN C85****KS ANISTON A707****CDI AMBITION 255C****BCLR MISS AMBITION E723****BCLR MISS AUTHORITY Z211**

	IND	Ratio
Doc.	1	
BW	88	96
205	629	87

	CE	BW	WW	YW	ADG	MCE	Milk	MWW	Stay	Doc	YG	Marb	REA	API	TI
EPDs:	10.4	1.1	66.3	97.9	0.2	6	30.1	63.1	15.3	15	-0.3	0.08	0.53	124.3	72.1
Rank:	55	35	85	80	75	45	10	40	70	10	99	45	99	60	65

Heavy muscled and smooth made. One of my favorite red bulls in the offering.

6

**BCLR G646**ASA#: 3659562  
Homo PolledBreed: PB SM  
Non-Diluted

DOB: 4/13/19

**CDI ABUNDANCE 391C****LCDR 125E****HOOK'S ULTIMATUM 36U****CDI VEGAS 26X****BCLR MISS VEGAS D646****BCLR MISS IZZY W902**

	IND	Ratio
Doc.	1	
BW	85	97
205	790	108

	CE	BW	WW	YW	ADG	MCE	Milk	MWW	Stay	Doc	YG	Marb	REA	API	TI
EPDs:	12.9	0.8	83.6	116.2	0.2	7.7	26.6	68.4	20.6	12.2	-0.27	0.07	0.58	131.6	76.9
Rank:	20	30	20	40	75	20	30	20	10	35	99	50	99	40	40

Dark red with plenty of rib and performance.

7

**BCLR RED EYE G451**ASA#: 3659503  
Homo PolledBreed: PB SM  
Non-Diluted

DOB: 3/16/19

**DCR MR MOON SHINE X102****TNT RED EYE A212****TNT MISS Y32****NPS COW TOWN Y40****BCLR MISS COWTOWN B451****BCLR MISS WILMA W911**

	IND	Ratio
Doc.	3	
BW	85	94
205	650	89

	CE	BW	WW	YW	ADG	MCE	Milk	MWW	Stay	Doc	YG	Marb	REA	API	TI
EPDs:	11.1	0.9	68	109.4	0.26	6.4	19.4	53.3	13.7	11.8	-0.45	-0.08	1.06	116.9	69.7
Rank:	45	35	80	55	30	40	90	90	85	40	55	90	15	80	80

Red Eye has been consistent for us both in the bull and heifer pen.







8

## BCLR RED EYE G39W

ASA#: 3659616  
Homo Polled

Breed: PB SM  
Non-Diluted

DOB: 3/20/19

DCR MR MOON SHINE X102  
TNT RED EYE A212  
TNT MISS Y32

WS BEEF MAKER R13  
WS LADY BEEF W39

WS MISS SATISFIED S131

	IND	Ratio
Doc.	1	
BW	99	109
205	782	107

	CE	BW	WW	YW	ADG	MCE	Milk	MWW	Stay	Doc	YG	Marb	REA	API	TI
EPDs:	8.5	3.9	80.9	129.5	0.3	7.1	19.8	60.2	16.1	14.1	-0.44	0.1	1.15	127.8	77.9
Rank:	80	90	30	15	10	25	85	60	60	15	60	40	10	50	35

11-year-old dam has a perfect udder and has put many sons in our sales.



LOT 10



DAM OF LOT 10  
HOOKS YANKEE 38Y

9

## BCLR RED EYE G410

ASA#: 3659491  
Homo Polled

Breed: PB SM  
Non-Diluted

DOB: 3/21/19

DCR MR MOON SHINE X102  
TNT RED EYE A212  
TNT MISS Y32

WS ALL IN W111  
BCLR MISS ALL IN B410

BCLR MISS AUTHORITY Z254

	IND	Ratio
Doc.	1	
BW	108	119
205	784	107

	CE	BW	WW	YW	ADG	MCE	Milk	MWW	Stay	Doc	YG	Marb	REA	API	TI
EPDs:	6.6	3.8	82.9	128.9	0.29	3.7	21.5	62.9	11.3	16.8	-0.47	-0.07	0.84	107.3	74.9
Rank:	95	90	20	15	15	85	70	45	99	3	40	85	60	95	50

I would recommend this bull to add length and frame.

10

## BCLR RED EYE G38

ASA#: 3659472  
Homo Polled

Breed: PB SM  
Non-Diluted

DOB: 3/27/19

DCR MR MOON SHINE X102  
TNT RED EYE A212  
TNT MISS Y32

WS BEEF KING W107  
HOOK'S YANKEE 38Y

HOOK'S ULTIMATUM 36U

	IND	Ratio
Doc.	2	
BW	94	103
205	746	102

	CE	BW	WW	YW	ADG	MCE	Milk	MWW	Stay	Doc	YG	Marb	REA	API	TI
EPDs:	6.6	1.7	72.3	110.7	0.24	3.2	21.5	57.6	13.6	12.9	-0.55	0.15	1.08	123.3	76.7
Rank:	95	50	65	55	45	90	70	70	85	25	10	30	15	65	40

Everyone notices G38 when they visit. Very stylish and sound with plenty of quarter, and to top it off, he's Yankee's natural calf.

6

BICHLER  
SIMMENTALS & RED ANGUS





**LOT 11**

# 11 BCLR RED EYE G887

ASA#: 3659650 Breed: PB SM DOB: 3/28/19  
Homo Polled Non-Diluted

DCR MR MOON SHINE X102

TNT RED EYE A212

TNT MISS Y32

BCLR SHAMWOW W611

KS ZADA Z887

KS PENNY X395

	IND	Ratio
Doc.	1	
BW	89	97
205	782	107

	CE	BW	WW	YW	ADG	MCE	Milk	MWW	Stay	Doc	YG	Marb	REA	API	TI
EPDs	12.2	1	82.7	131.2	0.3	7.7	24.3	65.6	17.3	18.7	-0.3	0.18	0.84	144.8	85
Rank	30	35	25	15	10	20	50	30	45	1	99	25	60	15	15

Zada's natural calf that is as rugged and high performing as any in the offering. A full brother sold to Traxinger Simmentals.

**DVAuction**  
Broadcasting Real-Time Auctions

Never Miss An Auction Again!  
Watch & Bid online for FREE!

Visit [www.DVAuction.com](http://www.DVAuction.com)  
and Register Today!

For General Questions Please Contact Our Office:  
(402) 316-5460 or support@dvauction.com



DAM OF LOT 11 • KS ZADA Z887



**LOT 12**

# 12 BCLR RED EYE G518

ASA#: 3659510 Breed: PB SM DOB: 4/16/19  
Homo Polled Non-Diluted

DCR MR MOON SHINE X102

TNT RED EYE A212

TNT MISS Y32

BCLR SHAMWOW W611

BCLR MISS SHAMWOW C518

CDI MS CROCKET 88T

	IND	Ratio
Doc.	1	
BW	89	99
205	761	104

	CE	BW	WW	YW	ADG	MCE	Milk	MWW	Stay	Doc	YG	Marb	REA	API	TI
EPDs	11.6	4	94	154.8	0.38	6.1	18.3	65.2	14.7	15.3	-0.47	0.09	1.08	135.1	86.4
Rank	40	95	3	1	1	45	95	30	80	10	40	45	15	35	10

A unique bull here that combines all of our best red genetics on the ranch. He is big hiped, wide topped and deep bodied. As an added bonus, he is dark red with a super disposition.





## 13 BCLR RED EYE G211

ASA#: 3659640 Breed: PB SM DOB: 4/22/19  
Homo Polled Non-Diluted

DCR MR MOON SHINE X102

TNT RED EYE A212

TNT MISS Y32

CDI AUTHORITY 77X

BCLR MISS AUTHORITY Z211

BCLR MISS IZZY W902

	IND	Ratio
Doc.	1	
BW	88	96
205	742	102

	CE	BW	WW	YW	ADG	MCE	Milk	MWW	Stay	Doc	YG	Marb	REA	API	TI
EPDs	10.4	0.6	73.1	116.9	0.27	5.5	21	57.5	10.1	15	-0.37	-0.17	0.82	106	70.6
Rank	55	30	60	40	20	55	75	75	99	10	90	99	65	95	75

Same cow family as lot 2. We have his dam, granddam and full sister in our cowherd.

## 14 BCLR RED EYE G438

ASA#: 3659499 Breed: PB SM DOB: 4/23/19  
Homo Polled Non-Diluted

DCR MR MOON SHINE X102

TNT RED EYE A212

TNT MISS Y32

WS BEEF KING W107

BCLR MISS BEEF KING B438

TNT MISS ANGIE L59

	IND	Ratio
Doc.	1	
BW	93	104
205	776	106

	CE	BW	WW	YW	ADG	MCE	Milk	MWW	Stay	Doc	YG	Marb	REA	API	TI
EPDs	10.3	0.4	73.6	117.2	0.27	7.4	16.3	53.1	14.7	14.4	-0.55	-0.02	1.26	124.8	75.2
Rank	55	25	60	35	20	20	99	90	80	15	10	75	2	60	50

Grandson of our TNT L59 donor. Dark red and long spined.

## 15 BCLR RED EYE G113

ASA#: 3659634 Breed: 3/4 SM 1/4 AR DOB: 3/14/19  
Hetero Polled Non-Diluted

DCR MR MOON SHINE X102

TNT RED EYE A212

TNT MISS Y32

OHRR DAKOTA COPPER 29K

BCLR MISS COPPER Y113

BCLR MISS UNITY U801

	IND	Ratio
Doc.	1	
BW	76	83
205	695	95

	CE	BW	WW	YW	ADG	MCE	Milk	MWW	Stay	Doc	YG	Marb	REA	API	TI
EPDs	15.7	-2	64.8	110.2	0.28	10.6	23.7	56.1	16	18.8	-0.28	-0.07	0.53	120.4	67.2
Rank	15	15	80	55	30	5	40	65	40	1	45	99	80	70	85

His dam has put several high sellers in our sale. Heavy muscled and long bodied.



## 16 BCLR RED EYE G440

ASA#: 3659500 Breed: 3/4 SM 1/4 AR DOB: 3/22/19  
Homo Polled Non-Diluted

DCR MR MOON SHINE X102

TNT RED EYE A212

TNT MISS Y32

WS RED DOZER Z98

BCLR MISS DOZER B440

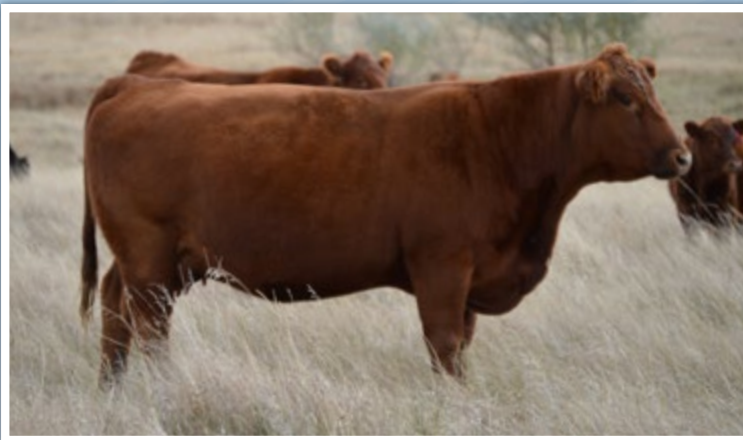
LELAND DESTINY 6215-9110W

	IND	Ratio
Doc.	1	
BW	103	113
205	748	102

	CE	BW	WW	YW	ADG	MCE	Milk	MWW	Stay	Doc	YG	Marb	REA	API	TI
EPDs	4.1	5.4	88.8	144.6	0.35	2.7	19.5	63.8	15.5	15.4	-0.29	0.23	0.89	116.5	77.6
Rank	99	99	5	3	3	99	80	25	50	10	40	65	15	75	40

High performance Red Eye son with extra muscle that is typical of this cow family. They always sort to the top.





DAM OF LOT 18 • BCLR MISS SHAMWOW C512



LOT 18



TNT RED EYE A212 • SIRE OF MANY LOTS IN THE SALE

17

## BCLR RED EYE G8

ASA#: 3659475

Homo Polled

Breed: 3/4 SM 1/4 AR

Non-Diluted

DOB: 4/3/19

DCR MR MOON SHINE X102

TNT RED EYE A212

TNT MISS Y32

HXC CONQUEST 4405P

HSF MS CON 112U 8Y

HSF HOTBODY 112U

	IND	Ratio
Doc.	1	
BW	96	105
205	726	99

	CE	BW	WW	YW	ADG	MCE	Milk	MWW	Stay	Doc	YG	Marb	REA	API	TI
EPDs:	9.8	0.7	72.8	116.1	0.27	6.2	18.9	55.3	12.7	16	-0.44	0.16	0.99	116.8	73.4
Rank:	80	55	50	40	35	60	85	70	75	10	10	80	10	75	60

Another Red Eye son that will add performance backed by a nice Conquest daughter.

18

## BCLR REVELATION G512

ASA#: 3659508Breed: 3/4 SM 3/16 AR 1/16 ANDOB: 3/22/19

Homo Polled

Non-Diluted

CCR WIDE RANGE 9005A

BCLR REVELATION D21-3

WS MOTHER LODE W21

BCLR SHAMWOW W611

BCLR MISS SHAMWOW C512

KS MISS COMBINATION S980

	IND	Ratio
Doc.	2	
BW	85	95
205	641	88

	CE	BW	WW	YW	ADG	MCE	Milk	MWW	Stay	Doc	YG	Marb	REA	API	TI
EPDs:	11.3	0.1	76.8	119.2	0.26	6.4	13.4	51.8	20.2	17.8	-0.41	0.01	0.96	139.4	77.4
Rank:	65	45	35	35	45	60	99	85	4	2	10	95	10	30	40

Unique pedigree combining Shamwow with our W21 donor. Very well balanced and attractive.



BCLR REVELATION D21-3 • SIRE OF LOTS 18, 75 AND 76







# LOT 20



DAM OF LOT 20 • RAB 701T Y9205

## 19 BCLR RED OAK G549

ASA#: 3659519 Breed: 5/8 SM 1/4 AR 1/8 AN DOB: 3/17/19  
Homo Polled Non-Diluted

GW CARRY ON Z0219  
GW RED OAK 295B  
GW MISS PREDESTINED 407Y  
HXC CONQUEST 4405P  
BCLR MISS CONQUEST C549  
BCLR MISS AUTHORITY 309

	IND	Ratio
Doc.	2	
BW	96	106
205	741	101

	CE	BW	WW	YW	ADG	MCE	Milk	MWW	Stay	Doc	YG	Marb	REA	API	TI
EPDs:	9	1.3	76.9	120.1	0.27	5.9	14.3	52.7	20.5	14.3	-0.24	0.2	0.95	132.3	74.4
Rank:	90	70	35	35	35	65	99	85	3	20	55	70	10	40	55

Moderate, heavy muscled Red Oak son out of a great cow family.

## 21 BCLR RED EYE G921R

ASA#: 3659458 Breed: 1/2 SM 1/2 AR DOB: 3/19/19  
Homo Polled Non-Diluted

DCR MR MOON SHINE X102  
TNT RED EYE A212  
TNT MISS Y32  
BHR JUDGE 640  
MISS BHR JUDGE 921  
MISS BHR VACATION 7103

	IND	Ratio
Doc.	3	
BW	101	109
205	755	103

	CE	BW	WW	YW	ADG	MCE	Milk	MWW	Stay	Doc	YG	Marb	REA	API	TI
EPDs:	9.2	3.4	70.7	117.2	0.29	6	24.8	60.1	14.2	16.9	-0.21	0.04	0.39	106	65.5
Rank:	85	95	60	40	25	65	30	45	65	4	65	95	95	90	90

High performing halfblood that is dark red. His dam is an 11-year-old Broken Heart Ranch cow that has done excellent.

## 20 BCLR AMBITION G9205

ASA#: 3659485 Breed: 5/8 SM 1/4 AN 1/8 AR DOB: 3/26/19  
Homo Polled Non-Diluted

HOOK'S XPECTATION 36X  
CDI AMBITION 255C  
HSF RED FORTUNES SIS 33  
GW PREDESTINED 701T  
RAB 701T Y9205  
RAB MS COMMITMENT W2602

	IND	Ratio
Doc.	2	
BW	105	ET
205	768	ET

	CE	BW	WW	YW	ADG	MCE	Milk	MWW	Stay	Doc	YG	Marb	REA	API	TI
EPDs:	6.1	3.8	92.3	141.9	0.31	3	25	71.1	17.1	12.3	-0.25	0.59	0.8	144.6	90.9
Rank:	99	99	3	4	15	99	30	5	30	45	50	10	30	20	3

We love this bull's dam! Thankfully, we have a full sister we plan to flush, or we would be utilizing him in our own program. He reminds us of Ambition with more calving ease.



LOT 21 ON PASTURE





**LOT 22**

**22**

## BCLR EB40 G718

ASA#: 3764622 Breed: 1/4 SM 3/4 AR DOB: 3/19/19  
Homo Polled Non-Diluted

### LEACHMAN CADILLAC L025A

ES EB40

ES B40

BIEBER HARD DRIVE Y120

BCLR MISS HARD DRIVE E718

BCLR MISS PACKER Z236

	IND	Ratio
Doc.	1	
BW	89	107
205	683	94

	CE	BW	WW	YW	ADG	MCE	Milk	MWW	Stay	Doc	YG	Marb	REA	API	TI
EPDs	9.6	-0.1	81.5	128.2	0.29	5.4	25.1	65.8	7.8	17.8	-0.07	0.37	0.56	113.7	80.8
Rank	85	40	20	20	25	75	30	20	99	2	95	35	75	80	25

We think G718 has heifer bull potential. He is very smooth made and correct with more muscle and performance than a typical calving ease bull.



**MATERNAL SISTER OF LOT 23 • BCLR MISS DAISY D611**

**23**

## BCLR CINCH G236

ASA#: 3659614 Breed: PB AR DOB: 3/14/19  
Homo Polled Non-Diluted

LSF SAGA 1040Y

PIE CINCH 4126

TKP BONNE BEL 110

MESSMER PACKER S008

BCLR MISS PACKER Z236

EIR R214

	IND	Ratio
Doc.	2	
BW	77	ET
205	667	ET

	CE	BW	WW	YW	ADG	MCE	Milk	MWW	Stay	Doc	YG	Marb	REA	API	TI
EPDs	11.1	-4.2	59.6	90	0.19	7.9	28.6	58.4	15.6	17.1	0.17	0.26	-0.04	120.2	74.3
Rank	65	2	95	95	90	30	10	55	45	3	99	60	99	70	55

Dark red, light birthweight son of our Z236 donor. Full sister is a standout bred, lot 60. I would recommend this bull for heifers.

**24**

## BCLR ROLLIN DEEP G218

ASA#: 3659643 Breed: PB AR DOB: 3/20/19  
Homo Polled Non-Diluted

BIEBER ROOSEVELT W384

BIEBER ROLLIN DEEP Y118

BIEBER TILLY 399W

LELAND SURPRISE 6038S

BCLR MISS SUPRISE W930

MISS BHR COPPER D 707

	IND	Ratio
Doc.	1	
BW	90	ET
205	721	ET

	CE	BW	WW	YW	ADG	MCE	Milk	MWW	Stay	Doc	YG	Marb	REA	API	TI
EPDs	12.7	-0.1	69	114	0.28	8	21.4	55.8	15.3	15.8	-0.37	0.17	0.76	126.6	73
Rank	45	40	65	45	30	30	65	70	50	10	20	75	35	55	60

Despite this bull's actual birthweight, I expect him to be easy calving. ET calf out of our W930 donor.







**LOT 25**

## 25 BCLR SENECA G253

ASA#: 3764623 Breed: PB AR DOB: 3/28/19  
Homo Polled Non-Diluted

BIEBER ROLLIN DEEP Y118

RREDS SENECA 731C

RREDS ASTER 309A

TNTS BANK STATEMENT T272

BCLR MISS GINNIE Z253

MESSMER GINNIE 282P

	CE	BW	WW	YW	ADG	MCE	Milk	MWW	Stay	Doc	YG	Marb	REA	API	TI
EPDs:	17.7	-2.2	65.4	107.2	0.26	9.9	22.3	54.9	13.8	13.6	0.1	-0.08	0.25	107.5	68.2
Rank:	4	15	80	65	45	10	55	75	65	25	99	99	99	90	80

Highest performing Red Angus bull. Really well balanced and should calve easy, too. I would recommend this bull for heifers.



**LOT 26**

## 26 BCLR PROCLAMATION G426

ASA#: 3659495 Breed: PB SM DOB: 3/22/19  
Homo Polled Hetero Black

CCR COWBOY CUT 5048Z

WS PROCLAMATION E202

WS MISS SUGAR C4

BCLR LINTON Y513-2

BCLR LINTON B426

TNT MISS HONEY L9

	CE	BW	WW	YW	ADG	MCE	Milk	MWW	Stay	Doc	YG	Marb	REA	API	TI
EPDs:	10.4	2	85.4	116.3	0.19	6.4	31.9	74.6	21.5	21.2	-0.33	-0.1	0.89	131.1	77.8
Rank:	55	60	15	40	85	40	5	4	3	1	99	90	50	45	35

Heavy weaning Proclamation son going back to our L9 donor. He has always been a standout among the black bulls and should sire performance and fantastic daughters.

## 27 BCLR ARTILLERY G543

ASA#: 3659517 Breed: PB SM DOB: 3/11/19  
Hetero Polled Hetero Black

REMINGTON LOCK N LOAD54U

BCLR ARTILLERY E21-3

WS MOTHER LODE W21

HOOKS SHEAR FORCE 38K

BCLR MISS FORCE C543

KS MISS DENSITY A482

	CE	BW	WW	YW	ADG	MCE	Milk	MWW	Stay	Doc	YG	Marb	REA	API	TI
EPDs:	11.7	0.8	68.2	103.7	0.22	5.5	24.4	58.4	21.6	14.5	-0.49	0.06	0.93	140.6	73.8
Rank:	35	30	80	70	60	55	45	70	3	15	30	50	40	25	55

Out of a beautiful Shear Force daughter going back to the KS Kayla donor.

## 28 BCLR ARTILLERY G17

ASA#: 3659545 Breed: PB SM DOB: 3/18/19  
Homo Polled Hetero Black

REMINGTON LOCK N LOAD54U

BCLR ARTILLERY E21-3

WS MOTHER LODE W21

TNT OUTLAW A316

DKSR MS OUTLAW D17

DKSR MS DAWSON B126

	CE	BW	WW	YW	ADG	MCE	Milk	MWW	Stay	Doc	YG	Marb	REA	API	TI
EPDs:	13.5	0	69.2	113.2	0.27	7.7	21.9	56.5	19.9	14.3	-0.51	0.06	1.01	143.3	76.2
Rank:	15	20	75	45	20	20	70	75	15	15	20	50	25	20	45

Larger framed Artillery son from a nice-uddered dam we purchased from Kunkel Simmentals.





**LOT 29**

## 29 BCLR ARTILLERY G895

ASA#: 3659651 Breed: PB SM DOB: 3/25/19  
Homo Polled Homo Black

REMINGTON LOCK N LOAD54U

BCLR ARTILLERY E21-3

WS MOTHER LODE W21

R PLUS DETINATOR 339X

HSR MS DETINATOR Z895

HSR MISS DATELINE U699

	CE	BW	WW	YW	ADG	MCE	Milk	MWW	Stay	Doc	YG	Marb	REA	API	TI
EPDs:	8.9	1.1	72	116	0.28	6.1	25.3	61.3	13.7	14.9	-0.37	0.09	0.75	124.6	76.1
Rank:	75	35	65	40	20	45	40	50	85	10	90	45	80	60	45

Big bodied outcross black bull out of a great cow. Maternal brother is a herd bull for Melander Simmentals.



**LOT 30**

## 30 BCLR ARTILLERY G337

ASA#: 3659636 Breed: PB SM DOB: 3/27/19  
Homo Polled Homo Black

REMINGTON LOCK N LOAD54U

BCLR ARTILLERY E21-3

WS MOTHER LODE W21

KS CAPTN JACK T518

KS HANNAH Y337

KS BECKY N185

	CE	BW	WW	YW	ADG	MCE	Milk	MWW	Stay	Doc	YG	Marb	REA	API	TI
EPDs:	5.8	3.2	84.8	141.3	0.35	2.7	27	69.3	19.3	13.3	-0.38	0.16	1.02	137.8	83
Rank:	95	85	15	4	2	95	25	15	20	20	85	30	20	30	20

Large framed black bull out of our Y337 donor.



**DAM OF LOT 30 AND GRANDDAM OF LOT 81• KS MISS HANNAH Y337**





DAM OF LOT 31 • TJ 15T



LOT 32



SIRE OF LOT 33 • CDI VEGAS 26X

## 31 BCLR REVELATION G15

ASA#: 3659615  
Homo Polled

Breed: PB SM  
Hetero Black

DOB: 3/9/19

CCR WIDE RANGE 9005A

BCLR REVELATION D21-3

WS MOTHER LOD W21

ES KILOWAT KH19

TJ 15T

TJ 8L

	IND	Ratio
Doc.	2	
BW	106	ET
205	663	ET

	CE	BW	WW	YW	ADG	MCE	Milk	MWW	Stay	Doc	YG	Marb	REA	API	TI
EPDs:	7.7	3.7	76.6	118.9	0.26	5	20.3	58.5	20.1	11	-0.53	0.02	1.04	128.9	73.8
Rank:	85	90	45	35	30	65	80	65	10	55	15	65	20	50	55

Maternal brother to TJ Power Grid that offers a different outcross pedigree. Females should be excellent.

## 32 BCLR TRAILBLAZER G308

ASA#: 3659479  
Homo Polled

Breed: PB SM  
Hetero Black

DOB: 4/5/19

TJ MAKERS MARK 215Y

CDI/LCDR TRAILBLAZER 217E

CDI MS GUNNER 2S

BCLR LINTON Y513-2

BCLR MISS LINTON A308

BCLR MISS SUGAR X027

	IND	Ratio
Doc.	3	
BW	99	108
205	773	106

	CE	BW	WW	YW	ADG	MCE	Milk	MWW	Stay	Doc	YG	Marb	REA	API	TI
EPDs:	8.5	3.4	83.5	120.8	0.23	5.2	25.5	67.2	19.2	5.5	-0.44	-0.29	0.97	112.3	70.2
Rank:	80	85	20	30	50	60	35	25	20	99	60	99	30	90	75

Style to burn! These Trailblazer sons always attract attention. Goes back to L9 donor.

## 33 BCLR VEGAS G778

ASA#: 3659600  
Homo Polled

Breed: PB SM  
Hetero Black

DOB: 3/25/19

HSF HIGH ROLLER 12T

CDI VEGAS 26X

CDI MS CROCKET 110U

CDI AMBITION 255C

BCLR MISS AMBITION E778

BCLR MISS AUTHORITY C515

	IND	Ratio
Doc.	1	
BW	70	82
205	648	89

	CE	BW	WW	YW	ADG	MCE	Milk	MWW	Stay	Doc	YG	Marb	REA	API	TI
EPDs:	13.9	0.4	73.1	103.8	0.19	6	27.1	63.6	22.2	10.7	-0.53	-0.02	1.03	141.6	75.6
Rank:	30	50	50	70	90	65	15	25	1	70	1	99	5	25	50

Super calving ease prospect and another L9 descendant. I would recommend this bull for heifers.





## 34 BCLR ARTILLERY G666

ASA#: 3659566 Breed: 3/4 SM 1/4 AN DOB: 2/28/19  
Homo Polled Homo Black

REMINGTON LOCK N LOAD54U

BCLR ARTILLERY E21-3

WS MOTHER LODE W21

S A V BRILLIANCE 8077

BCLR MISS BRILLNCE D666

BCLR MISS REGAN R513

	CE	BW	WW	YW	ADG	MCE	Milk	MWW	Stay	Doc	YG	Marb	REA	API	TI
EPDs:	8.4	-0.1	51.6	85.5	0.21	3.4	19.9	45.7	19.8	13.6	-0.39	0.35	0.77	132.2	65.9
Rank:	90	40	99	95	80	95	75	99	5	25	15	40	35	45	90

This bull goes back to our prolific Regan donor, and I expect him to be easy calving.

## 36 BCLR G005

ASA#: 3659623 Breed: 3/4 SM 1/4 AN DOB: 4/20/19  
Homo Polled Homo Black

REMINGTON LOCK N LOAD54U

BCLR ARTILLERY E21-3

WS MOTHER LODE W21

ELLINGSON LEGACY M229

HABR INGRID X005

HABR MISS S66

	CE	BW	WW	YW	ADG	MCE	Milk	MWW	Stay	Doc	YG	Marb	REA	API	TI
EPDs:	16.8	-1.1	76.7	114.8	0.24	8.4	19.5	57.8	20	13.9	-0.26	0.08	0.7	138.3	75.6
Rank:	10	25	35	45	60	25	80	55	4	25	50	90	45	30	50

Moderate framed Artillery son that should calve easy.

## 35 BCLR ARTILLERY G604

ASA#: 3659543 Breed: 3/4 SM 1/4 AN DOB: 3/22/19  
Homo Polled Homo Black

REMINGTON LOCK N LOAD54U

BCLR ARTILLERY E21-3

WS MOTHER LODE W21

CCR WIDE RANGE 9005A

HSR MS WIDE RANGE C604

HSR MS TOP GRADE A160

	CE	BW	WW	YW	ADG	MCE	Milk	MWW	Stay	Doc	YG	Marb	REA	API	TI
EPDs:	14.9	-0.8	75.5	126.9	0.32	9.1	20.1	57.8	20.8	15	-0.6	-0.05	1.36	145.7	78.9
Rank:	20	30	40	20	10	15	75	55	2	15	1	99	1	20	35

I like this bull more every day. He has herdbull potential, and I'd love to see his daughters in production. We recently added his tremendous dam to our donor pen.



BCLR ARTILLERY E21-3 • SIRE OF MANY LOTS IN THE SALE





## 37 BCLR TRAILBLAZER G531

ASA#: 3659513 Breed: 3/4 SM 1/4 AN DOB: 4/15/19  
Homo Polled Homo Black

TJ MAKERS MARK 215Y  
CDI/LCDR TRAILBLAZER 217E  
CDI MS GUNNER 2S

TNT AXIS X307  
WINC MISS 560C  
HSF PLAYMATE W917

	IND	Ratio
Doc.	1	
BW	96	107
205	856	117

	CE	BW	WW	YW	ADG	MCE	Milk	MWW	Stay	Doc	YG	Marb	REA	API	TI
EPDs:	9	3.8	107	156.7	0.31	5.1	18.8	72.3	18.9	13.8	-0.28	-0.16	0.93	115.7	80.9
Rank:	90	99	1	1	15	80	85	4	10	25	45	99	15	75	25

Powerhouse baldy that has many nice females in his pedigree with great udders.

## 39 BCLR TRAILBLAZER G511

ASA#: 3659507 Breed: 3/4 SM 1/4 AN DOB: 4/25/19  
Homo Polled Hetero Black

CDI ABUNDANCE 391C  
LCDR 125E  
HOOK'S ULTIMATUM 36U

S A V BRILLIANCE 8077  
BCLR MISS BRILLNCE C511  
BCLR MISS REGAN R513

	IND	Ratio
Doc.	2	
BW	99	109
205	840	115

	CE	BW	WW	YW	ADG	MCE	Milk	MWW	Stay	Doc	YG	Marb	REA	API	TI
EPDs:	9	2.8	93.7	135.5	0.26	4.7	22.8	69.6	20.3	13.7	-0.19	0.09	0.69	127.8	80
Rank:	90	95	2	10	45	85	50	10	4	25	70	90	50	50	30

Super big ribbed, high performance bull out of a Regan daughter.



## 38 BCLR HOME RUN G742

ASA#: 3659589 Breed: 3/4 SM 1/4 AN DOB: 3/14/19  
Homo Polled Homo Black

ELLINGSON IDENTITY 9104  
KS HOME RUN B23  
KS ZOEY Z661

BCLR WIDE LOAD C21-3  
BCLR MISS WIDE LOAD E742  
BCLR MISS VEGAS C555

	IND	Ratio
Doc.	1	
BW	99	109
205	730	100

	CE	BW	WW	YW	ADG	MCE	Milk	MWW	Stay	Doc	YG	Marb	REA	API	TI
EPDs:	15	1.2	80.6	137.4	0.35	8.6	24.8	65	16	18.5	-0.32	0.19	1.05	135.1	79.8
Rank:	20	70	20	10	3	20	30	20	40	2	30	75	4	35	30

Homerun has been our go-to calving ease bull for several years. We like this long bodied son and his attractive Wide Load dam.

## 40 BCLR POWER GRID G110

ASA#: 3659547 Breed: 3/4 SM 1/4 AN DOB: 3/24/19  
Homo Polled Homo Black

S A V NET WORTH 4200  
TJ POWER GRID 363Y  
TJ 15T

LBR CROCKETT R81  
CDI MS CROCKET 110U  
CDI MISS SHEAR FORCE 14N

	IND	Ratio
Doc.	1	
BW	87	ET
205	683	ET

	CE	BW	WW	YW	ADG	MCE	Milk	MWW	Stay	Doc	YG	Marb	REA	API	TI
EPDs:	9.9	2.7	71	108.6	0.23	6.1	23.7	59.1	22.1	12	-0.3	0.06	0.95	124.5	67.1
Rank:	80	90	60	60	65	65	40	50	1	50	35	95	10	60	85

Full brother to Perception's dam. We expect him to be an udder improver.





## 41 BCLR TRAILBLAZER G109

ASA#: 3659633 Breed: 5/8 SM 1/4 AR 1/8 AN DOB: 4/18/19  
Homo Polled Hetero Black

TJ MAKERS MARK 215Y  
CDI/LCDR TRAILBLAZER 217E  
CDI MS GUNNER 2S

SRF P RED COAT 819U  
BCLR MISS RC Y109

BCLR MISS VACATION T718

	IND	Ratio
Doc.	1	
BW	91	98
205	773	106

	CE	BW	WW	YW	ADG	MCE	Milk	MWW	Stay	Doc	YG	Marb	REA	API	TI
EPDs:	8.8	2.9	89.4	140.4	0.32	7.5	23.9	68.5	18.6	14.6	-0.22	0.15	0.7	127.7	79.8
Rank:	90	95	5	5	10	40	40	10	15	15	60	80	45	55	30

It is hard to miss this powerful baldy. His dam is picture perfect as well.



SIRE OF LOT 42 • CDI-LCDR TRAILBLAZER 217E

## 42 BCLR TRAILBLAZER G130

ASA#: 3659453 Breed: 5/8 SM 3/8 AN DOB: 4/19/19  
Hetero Polled Hetero Black

TJ MAKERS MARK 215Y  
CDI/LCDR TRAILBLAZER 217E  
CDI MS GUNNER 2S

	IND	Ratio
Doc.	1	
BW	88	96
205	777	106

BCLR 130

	CE	BW	WW	YW	ADG	MCE	Milk	MWW	Stay	Doc	YG	Marb	REA	API	TI
EPDs:	16.3	0.3	90.5	140.9	0.31	10.1	22	67.2	14	11.6	-0.28	0.12	0.69	132.1	83.9
Rank:	10	50	4	5	15	10	60	15	65	55	45	85	50	45	15

We really like this bull's dam. She has a perfect foot and udder.





# BRED HEIFER SERVICE SIRES



**BCLR MANIFESTO G352**

\$62,500 high selling bull from our 2020 Spring Sale • Owned with Lazy C Diamond Ranch of North Dakota. • Semen Available.



**CDI PERCEPTION 254E**



**KS HOME RUN B23**

Reg. #	NAME	BREED%	CE	BW	WW	YW	MCE	Milk	MWW	STAY	CW	MARB	YG	BF	REA	API	TI
2850519	KS HOME RUN B23	1/2 SM 1/2 AN	20.3	-3.4	75.6	125.6	12.4	26.6	64.3	15.5	37	0.36	-0.13	0.004	0.78	154.9	86
3659574	BCLR MANIFESTO G352	PB SM	13.7	-0.5	93.9	135.7	8.2	34.3	81.2	19	45.3	0.41	-0.32	-0.074	0.88	167.4	99.7
3287123	CDI PERCEPTION 254E	PB SM	13	-0.9	79.8	120.1	6.6	25.7	65.5	20.8	31.3	0.18	-0.25	-0.046	0.7	152.9	84.8

Planned matings were calculated on each bred heifer and the sire that she was confirmed to. They are listed in a table format like the one here beneath each lot.

CE	BW	WW	YW	ADG	MCE	Milk	MWW	Stay	Doc	YG	Marb	REA	API	TI
11.1	2.3	77.2	117.6	0.3	7.3	25.2	63.7	17.4	16.2	-0.27	0.09	0.77	119.5	70.3





**LOT 43**



**SIRE OF LOT 43 • CDI AUTHORITY 77X**



**DAM OF LOT 43 • TJ MISS 38W**

## 43 BCLR MISS AUTHORITY G932

ASA#: 3659639  
Homo Polled

Breed: PB SM  
Non-Diluted

DOB: 3/7/19

**NF TRUMP S582**

**CDI AUTHORITY 77X**

**CDI MS CROCKET 88T**

**DIKEMANS SURE BET**

**TJ MS 38W**

**TJ 12L**

	IND	Ratio
Doc.	1	
BW	96	ET
205	722	ET

	CE	BW	WW	YW	ADG	MCE	Milk	MWW	Stay	Doc	YG	Marb	REA	API	TI
EPDs:	13.6	0.5	70.9	109.2	0.24	3.2	35.4	70.8	17.6	14	-0.33	0.2	0.97	144	80.2
Rank:	15	25	70	55	45	90	1	10	40	15	99	20	30	20	25

We wanted a special heifer to headline our bred heifers, so we decided to offer this beautiful red baldy daughter out of our 38W donor. Her flush sister commanded \$12,000 in our spring sale. She is sired by one of the best red bulls to ever walk our ranch, and her Perception bull calf makes this a no-brainer investment for her new owner. AI'd 5/28/20 to Perception. Exposed to Perception from 6/1/20-7/30/20. Ultrasound safe to Perception with a bull due 3/7/21.

CE	BW	WW	YW	ADG	MCE	Milk	MWW	Stay	Doc	YG	Marb	REA	API	TI
13.3	-0.2	75.35	114.65	0.25	4.9	30.55	68.15	19.2	12.2	-0.29	0.19	0.84	131.6	74.6



**LOT 44**

## 44 BCLR MISS IMPERIAL G913

ASA#: 3659502  
Homo Polled

Breed: PB SM  
Non-Diluted

DOB: 2/26/19

**IR IMPERIAL B772**

**IR IMPERIAL D948**

**IR MS DUAL FOCUS W086**

**NPS COW TOWN Y40**

**BCLR MISS COWTOWN B445**

**MLC MS 740T W573**

	IND	Ratio
Doc.	1	
BW	85	99
205	681	99

	CE	BW	WW	YW	ADG	MCE	Milk	MWW	Stay	Doc	YG	Marb	REA	API	TI
EPDs:	9.7	-0.2	65.6	95.4	0.19	7.1	24.8	57.5	20.1	15.3	-0.4	0.5	0.75	158.6	83.5
Rank:	65	15	90	85	85	25	45	75	10	10	80	1	80	4	15

Stout made, high API heifer with a different pedigree. AI'd 5/28/20 to Perception. Exposed to Perception from 6/1/20-7/30/20. Ultrasound safe to Perception with a heifer due 3/7/21.

CE	BW	WW	YW	ADG	MCE	Milk	MWW	Stay	Doc	YG	Marb	REA	API	TI
11.35	-0.55	72.7	107.75	0.22	6.85	25.25	61.5	20.45	12.85	-0.33	0.34	0.73	139.1	76.3







**LOT 46**

## 46 BCLR MISS RED EYE G937

ASA#: 3659567 Breed: PB SM DOB: 3/14/19  
Homo Polled Non-Diluted

DCR MR MOON SHINE X102  
TNT RED EYE A212  
TNT MISS Y32

LFE BLACK LAKOTA 385W  
BCLR MISS LAKOTA D668  
CDI MS CROCKET 88T

	IND	Ratio
Doc.	2	
BW	72	88
205	649	95

	CE	BW	WW	YW	ADG	MCE	Milk	MWW	Stay	Doc	YG	Marb	REA	API	TI
EPDs	13.5	0	72	124.3	0.33	5.6	20	56	14.6	16.5	-0.48	-0.09	1.06	126.4	74.1
Rank	15	20	65	25	3	55	85	80	80	3	35	90	15	55	55

Different pedigree going back to Authority's dam. AI'd 5/28/20 to Perception. Exposed to Perception from 6/1/20-7/30/20. Ultrasound safe to Perception with a heifer due 3/7/21.

	CE	BW	WW	YW	ADG	MCE	Milk	MWW	Stay	Doc	YG	Marb	REA	API	TI
	13.25	-0.45	75.9	122.2	0.29	6.1	22.85	60.75	17.7	13.45	-0.37	0.05	0.88	123.4	71.8



**LOT 47**

## 45 BCLR MISS LIL JOHN G934

ASA#: 3659584 Breed: PB SM DOB: 3/8/19  
Homo Polled Non-Diluted

KWA FLYF RED MOUNTAIN 16Z  
KS LITTLE JOHN C85  
KS ANISTON A707

TNT RED EYE A212  
BCLR MISS RED EYE E732

BCLR MISS ROLLER B435

	IND	Ratio
Doc.	2	
BW	78	91
205	565	83

	CE	BW	WW	YW	ADG	MCE	Milk	MWW	Stay	Doc	YG	Marb	REA	API	TI
EPDs	12.6	-0.4	63.5	98.4	0.22	8.4	32.2	63.9	15.5	18.4	-0.38	-0.01	0.57	125.4	71.1
Rank	25	15	95	80	60	10	5	40	70	1	85	75	99	60	70

Dam was high indexing heifer at weaning of our 2017 calf crop. AI'd 5/28/20 to Perception. Exposed to Perception from 6/1/20-7/30/20. Ultrasound safe to Perception with a heifer due 3/7/21.

	CE	BW	WW	YW	ADG	MCE	Milk	MWW	Stay	Doc	YG	Marb	REA	API	TI
	12.8	-0.65	71.65	109.25	0.24	7.5	28.95	64.7	18.15	14.4	-0.32	0.09	0.64	122.9	70.3

## 47 BCLR MISS RED EYE G939

ASA#: 3659476 Breed: PB SM DOB: 3/16/19  
Homo Polled Non-Diluted

DCR MR MOON SHINE X102  
TNT RED EYE A212  
TNT MISS Y32

CDI AUTHORITY 77X  
BCLR MISS AUTHORITY A301  
S037

	IND	Ratio
Doc.	1	
BW	86	100
205	639	93

	CE	BW	WW	YW	ADG	MCE	Milk	MWW	Stay	Doc	YG	Marb	REA	API	TI
EPDs	12.6	0.5	68.6	110.4	0.26	7.5	20.1	54.4	14.3	17.5	-0.41	-0.01	0.75	124.4	72.3
Rank	25	25	80	55	30	20	85	85	80	2	75	75	80	60	65

Great cow family behind this heifer. AI'd 5/28/20 to Perception. Exposed to Perception from 6/1/20-7/30/20. Ultrasound safe to Perception with a bull due 4/2/21.

	CE	BW	WW	YW	ADG	MCE	Milk	MWW	Stay	Doc	YG	Marb	REA	API	TI
	12.8	-0.2	74.2	115.25	0.26	7.05	22.9	59.95	17.55	13.95	-0.33	0.09	0.73	122.4	70.9



**DAM OF LOT 47 • BCLR MISS AUTHORITY A301**





## 49 BCLR MISS RED EYE G981

ASA#: 3659486 Breed: 3/4 SM 1/4 AR DOB: 4/28/19  
Homo Polled Non-Diluted

DCR MR MOON SHINE X102

TNT RED EYE A212

TNT MISS Y32

WS BEEF MAKER R13

BCLR MISS MAKER A378

LELAND JULIA 7071T

	CE	BW	WW	YW	ADG	MCE	Milk	MWW	Stay	Doc	YG	Marb	REA	API	TI
EPDs:	12.6	0.5	73.6	119.7	0.29	8	18.7	55.4	14	17.8	-0.32	0.25	0.77	128.7	76.5
Rank:	45	55	45	35	25	30	85	70	65	2	30	60	35	50	45

Dark red and super fancy carbon copy of her dam. AI'd 5/28/20 to Perception. Exposed to Perception from 6/1/20-7/30/20. Ultrasound safe to Perception with a heifer due 4/2/21.

CE	BW	WW	YW	ADG	MCE	Milk	MWW	Stay	Doc	YG	Marb	REA	API	TI
12.8	-0.2	76.7	119.9	0.27	7.3	22.2	60.45	17.4	14.1	-0.29	0.22	0.74	130.2	75.5



## 48 BCLR MISS G977

ASA#: 3659610 Breed: PB SM DOB: 4/15/19  
Homo Polled Non-Diluted

DCR MR MOON SHINE X102

TNT RED EYE A212

TNT MISS Y32

TNT GUNNER N208

BCLR MISS FANCY U811

BCLR MISS SHAWNA S616

	CE	BW	WW	YW	ADG	MCE	Milk	MWW	Stay	Doc	YG	Marb	REA	API	TI
EPDs:	15.9	1.6	61.4	88.9	0.17	9.5	17.6	48.3	12.4	14.8	-0.39	-0.17	0.64	109.3	62.2
Rank:	4	50	95	95	95	4	95	99	95	10	85	99	95	95	99

12-year-old dam is going strong with a great udder. AI'd 5/28/20 to Perception. Exposed to Perception from 6/1/20-7/30/20. Ultrasound safe to Perception with a heifer due 3/27/21.

CE	BW	WW	YW	ADG	MCE	Milk	MWW	Stay	Doc	YG	Marb	REA	API	TI
14.45	0.35	70.6	104.5	0.21	8.05	21.65	56.9	16.6	12.6	-0.32	0.01	0.67	114.7	65.8



## 50 BCLR MISS RED OAK G919

ASA#: 3659470 Breed: 3/4 SM 1/4 AN DOB: 2/27/19  
Homo Polled Non-Diluted

GW CARRY ON 20219

GW RED OAK 295B

GW MISS PREDESTINED 407Y

HSF MAJORITY 141S

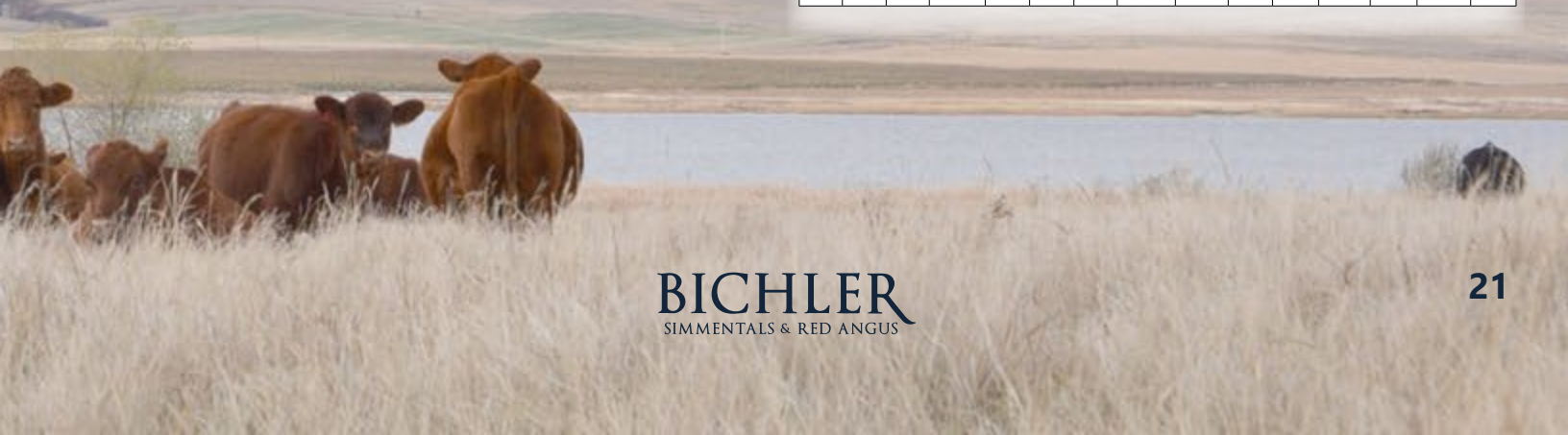
HSF MS MAJORITY 33R 13Y

HSF RED FORTUNES SIS 33

	CE	BW	WW	YW	ADG	MCE	Milk	MWW	Stay	Doc	YG	Marb	REA	API	TI
EPDs:	8.2	5.3	95	149.3	0.34	6.3	20.9	68.4	19.7	19	-0.27	0.08	0.79	135.7	83.6
Rank:	95	99	2	2	5	60	70	10	5	1	45	90	30	35	15

Out of Ambition's maternal sister. She will be the bull-making kind. AI'd 5/28/20 to Perception. Exposed to Perception from 6/1/20-7/30/20. Ultrasound safe to Perception with a bull due 3/25/21.

CE	BW	WW	YW	ADG	MCE	Milk	MWW	Stay	Doc	YG	Marb	REA	API	TI
10.6	2.2	87.4	134.7	0.3	6.45	23.3	66.95	20.25	14.7	-0.26	0.13	0.75	127.6	76.4







**LOT 52**

## 51 BCLR MISS ES EB40 G923

ASA#: 3659597 Breed: 3/4 SM 7/32 AR 1/32 ANDOB: 2/28/19  
Homo Polled Non-Diluted

LEACHMAN CADILLAC L025A

ES EB40

ES B40

CDI AMBITION 255C

BCLR MISS AMBITION E766

BCLR MISS VEGAS B462

	CE	BW	WW	YW	ADG	MCE	Milk	MWW	Stay	Doc	YG	Marb	REA	API	TI
EPDs:	10.1	0.9	71.3	116.3	0.28	4.2	23.9	59.6	12.8	15.5	-0.28	0.17	0.77	116.6	72.6
Rank:	80	60	55	40	30	90	40	45	75	10	45	75	35	75	65

This heifer is out of the same cow family as our lead off bull. We rarely offer females from this line. AI'd 5/28/20 to Perception. Exposed to Perception from 6/1/20-7/30/20. Ultrasound safe to Perception with a bull due 3/7/21.

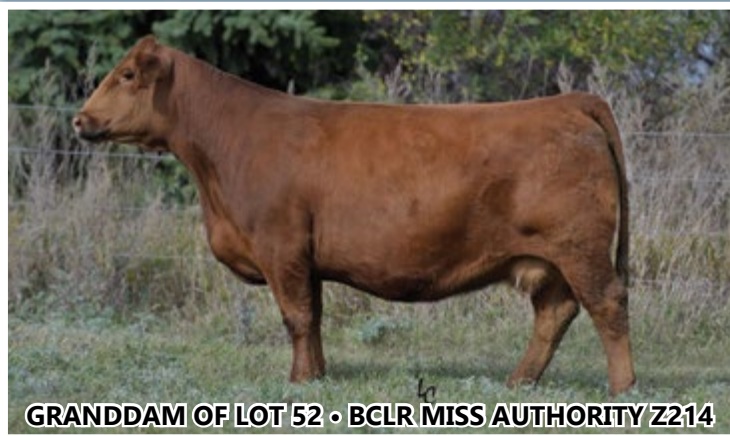
CE	BW	WW	YW	ADG	MCE	Milk	MWW	Stay	Doc	YG	Marb	REA	API	TI
11.55	0	75.55	118.2	0.27	5.4	24.8	62.55	16.8	12.95	-0.27	0.18	0.74	124.2	73.5



**LOT 53**



DAM OF LOT 53 • BCLR MISS RED EYE C587



GRANDDAM OF LOT 52 • BCLR MISS AUTHORITY Z214

## 52 BCLR MISS DIRECTION G938

ASA#: 3659568 Breed: 3/4 SM 1/4 AR DOB: 3/16/19  
Homo Polled Non-Diluted

ANDRAS NEW DIRECTION R240

BCLR DIRECTION E38-1

HOOK'S YANKEE 38Y

TNT RED EYE A212

BCLR MISS RED EYE D671

BCLR MISS AUTHORITY Z214

	CE	BW	WW	YW	ADG	MCE	Milk	MWW	Stay	Doc	YG	Marb	REA	API	TI
EPDs:	6.4	4.5	78.1	130.3	0.33	2.6	16	55	14.2	13.9	-0.31	0.14	0.82	109.7	70.3
Rank:	99	99	30	15	10	99	95	70	65	25	35	80	25	90	75

You will not find a prettier or more feminine heifer, and she goes back to our Z214 cow. AI'd 5/28/20 to Perception. Exposed to Perception from 6/1/20-7/30/20. Ultrasound safe to Perception with a bull due 3/7/21.

CE	BW	WW	YW	ADG	MCE	Milk	MWW	Stay	Doc	YG	Marb	REA	API	TI
9.7	1.8	78.95	125.2	0.29	4.6	20.85	60.25	17.5	12.15	-0.28	0.16	0.76	120.7	72.4

## 53 BCLR MISS POWER G953

ASA#: 3659541 Breed: 3/4 SM 1/8 AN 1/8 AR DOB: 3/21/19  
Homo Polled Non-Diluted

TJ POWER GRID 363Y

BCLR POWER GRID D611-1

BCLR MISS SHANIA S611

TNT RED EYE A212

BCLR MISS RED EYE C587

WS MOTHER LODGE W21

	CE	BW	WW	YW	ADG	MCE	Milk	MWW	Stay	Doc	YG	Marb	REA	API	TI
EPDs:	7.7	4	90	151.4	0.38	5	22.3	67.3	17.1	13.4	-0.3	0.17	1.06	125.2	80.1
Rank:	95	99	4	2	1	80	55	15	30	30	35	75	4	60	30

One of the hardest to part with. We wish we could keep them all! Combines YS611 and W21. AI'd 5/28/20 to Perception. Exposed to Perception from 6/1/20-7/30/20. Ultrasound safe to Perception with a heifer due 3/7/21.

CE	BW	WW	YW	ADG	MCE	Milk	MWW	Stay	Doc	YG	Marb	REA	API	TI
10.35	1.55	84.9	135.75	0.32	5.8	24	66.4	18.95	11.9	-0.28	0.18	0.88	128.7	77.3



# 54 BCLR MISS POWER G955

ASA#: 3659560Breed: 3/4 SM 1/8 AN 1/8 AR DOB: 3/22/19  
Homo Polled Non-Diluted

TJ POWER GRID 363Y  
BCLR POWER GRID D611-1  
BCLR MISS SHANIA S611

TNT RED EYE A212  
BCLR MISS RED EYE D637  
BCLR MISS AUTHORITY Z211

	IND	Ratio
Doc.	2	
BW	81	97
205	634	92

	CE	BW	WW	YW	ADG	MCE	Milk	MWW	Stay	Doc	YG	Marb	REA	API	TI
EPDs	12.5	1.7	78.1	137.7	0.37	7.7	21.2	60.2	12.6	15.4	-0.24	0.11	0.69	119	74.8
Rank:	45	75	30	10	2	35	65	45	75	10	55	85	50	70	55

Dark red and long bodied. AI'd 5/28/20 to Perception. Exposed to Perception from 6/1/20-7/30/20. Ultrasound safe to Perception with a heifer due 3/27/21.

	CE	BW	WW	YW	ADG	MCE	Milk	MWW	Stay	Doc	YG	Marb	REA	API	TI
	12.75	0.4	78.95	128.9	0.31	7.15	23.45	62.85	16.7	12.9	-0.25	0.15	0.7	125.6	74.7



UDDER OF LOT 54'S DAM • BCLR MISS RED EYE D637



DAM OF LOT 55 • BCLR MISS WIDE RANGE C563

# 55 BCLR MISS POWER G959

ASA#: 3659527Breed: 3/4 SM 1/8 AN 1/8 AR DOB: 3/23/19  
Homo Polled Non-Diluted

TJ POWER GRID 363Y  
BCLR POWER GRID D611-1  
BCLR MISS SHANIA S611

CCR WIDE RANGE 9005A  
BCLR MISS WIDE RANGE C563  
WS MOTHER LODGE W21

	IND	Ratio
Doc.	1	
BW	77	91
205	598	87

	CE	BW	WW	YW	ADG	MCE	Milk	MWW	Stay	Doc	YG	Marb	REA	API	TI
EPDs	13.8	0	69.6	112.2	0.27	9.1	14.8	49.5	14.6	13.5	-0.3	0	0.84	116.3	67.9
Rank:	30	40	65	50	35	15	99	95	60	30	35	99	25	75	85

Another heifer that combines the W21 donor with Shamwow's dam. Tremendous potential. AI'd 5/28/20 to Perception. Exposed to Perception from 6/1/20-7/30/20. Ultrasound safe to Perception with a heifer due 3/7/21.

	CE	BW	WW	YW	ADG	MCE	Milk	MWW	Stay	Doc	YG	Marb	REA	API	TI
	13.4	-0.45	74.7	116.15	0.26	7.85	20.25	57.5	17.7	11.95	-0.28	0.09	0.77	123.9	71.1

# 56 BCLR MISS POWER G973

ASA#: 3659518Breed: 5/8 SM 1/4 AR 1/8 AN DOB: 4/9/19  
Homo Polled Non-Diluted

TJ POWER GRID 363Y  
BCLR POWER GRID D611-1  
BCLR MISS SHANIA S611

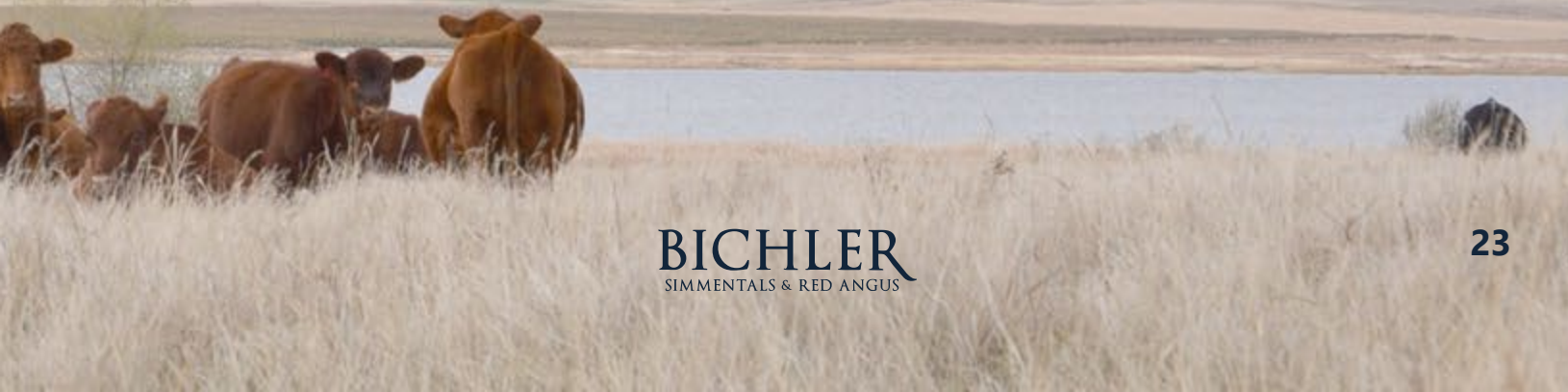
TNT RED EYE A212  
BCLR MISS RED EYE C547  
BCLR MISS COPPER Y115

	IND	Ratio
Doc.	1	
BW	71	83
205	622	91

	CE	BW	WW	YW	ADG	MCE	Milk	MWW	Stay	Doc	YG	Marb	REA	API	TI
EPDs	12.4	1.5	77.3	118.6	0.26	8	19.5	58.1	15.8	16.5	-0.21	0.16	0.58	124.2	74.2
Rank:	50	75	35	35	45	30	80	55	45	5	65	80	70	60	55

This heifer keeps getting better and better. I have three generations working in my cowherd. AI'd 5/28/20 to Perception. Exposed to Perception from 6/1/20-7/30/20. Ultrasound safe to Perception with a bull due 3/27/21.

	CE	BW	WW	YW	ADG	MCE	Milk	MWW	Stay	Doc	YG	Marb	REA	API	TI
	12.7	0.3	78.55	119.35	0.26	7.3	22.6	61.8	18.3	13.45	-0.23	0.17	0.64	127.9	74.2





## 57 BCLR MISS DIRECTION G920

ASA#: 3659617 Breed: 1/2 SM 1/2 AR DOB: 2/28/19  
Homo Polled Non-Diluted

ANDRAS NEW DIRECTION R240

BCLR DIRECTION E38-1

HOOK'S YANKEE 38Y

TNT GUNNER N208

BCLR MISS IZZY W902

TBS MS GOLDEN ROD 1413

	IND	Ratio
Doc.	1	
BW	93	107
205	717	105

	CE	BW	WW	YW	ADG	MCE	Milk	MWW	Stay	Doc	YG	Marb	REA	API	TI
EPDs	5.6	2.6	67.5	104.8	0.23	2.7	27.6	61.3	17	13.1	-0.11	0.3	0.28	119.3	69.6
Rank	99	90	70	70	65	99	15	35	30	35	90	50	99	70	75

I've always been a fan of G920. Her dam is 11 and working. She goes back to Yankee on the top side. She will make a great cow. AI'd 5/28/20 to Perception. Exposed to Perception from 6/1/20-7/30/20. Ultrasound safe to Perception with a heifer due 3/29/21.

CE	BW	WW	YW	ADG	MCE	Milk	MWW	Stay	Doc	YG	Marb	REA	API	TI
9.3	0.85	73.65	112.45	0.24	4.65	26.65	63.4	18.9	11.75	-0.18	0.24	0.49	125.4	72

## 59 BCLR MISS RED EYE G964

ASA#: 3659554 Breed: 1/2 SM 1/2 AR DOB: 4/1/19  
Homo Polled Non-Diluted

DCR MR MOON SHINE X102

TNT RED EYE A212

TNT MISS Y32

BIEBER ROLLIN DEEP Y118

BCLR MISS RLN DEEP D610

MISS BHR DRIFTER 196

	IND	Ratio
Doc.	1	
BW	70	81
205	617	90

	CE	BW	WW	YW	ADG	MCE	Milk	MWW	Stay	Doc	YG	Marb	REA	API	TI
EPDs	14.5	1.1	82	142.3	0.38	9.6	19.3	60.3	10.6	16.2	-0.2	0.31	0.65	131.2	82.8
Rank	25	65	20	4	1	10	80	45	90	10	70	50	55	45	20

Huge middle heifer out of our best Rollin Deep daughter. AI'd 5/28/20 to Perception. Exposed to Perception from 6/1/20-7/30/20. Ultrasound safe to Perception with a bull due 3/7/21.

CE	BW	WW	YW	ADG	MCE	Milk	MWW	Stay	Doc	YG	Marb	REA	API	TI
13.75	0.1	80.9	131.2	0.32	8.1	22.5	62.9	15.7	13.3	-0.23	0.25	0.68	131.5	78.6



LOT 57

## 58 BCLR MISS RED EYE G951

ASA#: 3764620 Breed: 1/2 SM 1/2 AR DOB: 3/20/19  
Homo Polled Non-Diluted

DCR MR MOON SHINE X102

TNT RED EYE A212

TNT MISS Y32

LSF EXPECT ECHO 2252Z

LELAND ECHO 6466

LELAND COOL 9047-Y47

	IND	Ratio
Doc.	1	
BW	87	105
205	644	103

	CE	BW	WW	YW	ADG	MCE	Milk	MWW	Stay	Doc	YG	Marb	REA	API	TI
EPDs	5.9	1.6	71.8	120.8	0.31	4	25	60.8	11.6	16.6	-0.16	0.37	0.51	119	76.1
Rank	99	75	55	30	15	90	30	40	85	5	80	35	80	70	50

Larger framed and long bodied. AI'd 5/28/20 to Perception. Exposed to Perception from 6/1/20-7/30/20. Ultrasound safe to Perception due 5/9/21.

CE	BW	WW	YW	ADG	MCE	Milk	MWW	Stay	Doc	YG	Marb	REA	API	TI
9.45	0.35	75.8	120.45	0.28	5.3	25.35	63.15	16.2	13.5	-0.21	0.28	0.61	125.3	75.3



LOT 59





**LOT 60**

## 60 BCLR MISS CINCH G935

ASA#: 3695749 Breed: PB AR DOB: 3/11/19  
Homo Polled Non-Diluted

LSF SAGA 1040Y  
PIE CINCH 4126  
TKP BONNE BEL 110

MESSMER PACKER S008  
BCLR MISS PACKER Z236  
EIR R214

	IND	Ratio
Doc.	1	
BW	86	100
205	739	100

	CE	BW	WW	YW	ADG	MCE	Milk	MWW	Stay	Doc	YG	Marb	REA	API	TI
EPDs	10.7	-2	70.6	110.5	0.25	7.4	28.6	63.9	16.6	16.7	0.15	0.22	0.12	121	77.7
Rank:	70	15	60	55	55	40	10	25	35	4	99	65	99	65	40

Standout bred! We expect her to carry on in her donor's footsteps. She is extremely complete and well balanced. ARAA# 4231938. AI'd 5/28/20 to Seneca. Exposed to Perception from 6/1/20-7/30/20. Ultrasound safe to Seneca with a bull due 3/7/21.

	CE	BW	WW	YW	ADG	MCE	Milk	MWW	Stay	Doc	YG	Marb	REA	API	TI
	11.15	-2.3	70.75	112.95	0.27	5.85	25.85	61.2	16	15.2	0.16	0.11	0.21	109.5	70.2

## 61 BCLR MISS ROLLIN DEEP G944

ASA#: 3659468 Breed: PB AR DOB: 3/17/19  
Homo Polled Non-Diluted

BIEBER ROOSEVELT W384  
BIEBER ROLLIN DEEP Y118  
BIEBER TILLY 399W

LELAND SURPRISE 6038S  
BCLR MISS SUPRISE W930  
MISS BHR COPPER D 707

	IND	Ratio
Doc.	2	
BW	66	ET
205	602	ET

	CE	BW	WW	YW	ADG	MCE	Milk	MWW	Stay	Doc	YG	Marb	REA	API	TI
EPDs	10.9	-3.4	51.4	84.3	0.21	5.9	30.6	56.3	16.2	16.4	0.07	0.4	0.25	125.7	73
Rank:	70	4	99	99	80	65	4	65	40	5	99	30	99	55	60

Super feminine female out of our W930 donor. AI'd 5/28/20 to Perception. Exposed to Perception from 6/1/20-7/30/20. Ultrasound safe to Perception with a bull due 3/7/21.

	CE	BW	WW	YW	ADG	MCE	Milk	MWW	Stay	Doc	YG	Marb	REA	API	TI
	11.95	-2.15	65.6	102.2	0.23	6.25	28.15	60.9	18.5	13.4	-0.09	0.29	0.48	132.8	72.3

## 62 BCLR MISS E921R G962

ASA#: 3764621 Breed: PB AR DOB: 3/27/19  
Homo Polled Non-Diluted

BIEBER DRIVEN B105  
BCLR DRIVEN E921R  
MISS BHR JUDGE 921

WFL COMMITMENT 5081  
LELAND COMMITMENT 5081-7429  
LELAND FIRE T22-505

	IND	Ratio
Doc.	1	
BW	74	95
205	607	97

	CE	BW	WW	YW	ADG	MCE	Milk	MWW	Stay	Doc	YG	Marb	REA	API	TI
EPDs	13.5	-1.4	67	108.2	0.26	7.5	28.6	62.1	16.8	16	0.14	0.33	-0.09	129	78.2
Rank:	35	20	75	60	45	40	10	35	30	10	99	45	99	50	40

What a looker! Beautiful, dark red and deep. AI'd 5/28/20 to Perception. Exposed to Perception from 6/1/20-7/30/20. Ultrasound safe to Perception with a bull due 3/7/21.

	CE	BW	WW	YW	ADG	MCE	Milk	MWW	Stay	Doc	YG	Marb	REA	API	TI
	13.25	-1.15	73.4	114.15	0.26	7.05	27.15	63.8	18.8	13.2	-0.06	0.26	0.31	134.6	75



**LOT 62**



## 63 BCLR MISS ARTILLERY G927

ASA#: 3659552 Breed: PB SM DOB: 3/2/19  
Homo Polled Homo Black

### REMINGTON LOCK N LOAD54U

#### BCLR ARTILLERY E21-3

#### WS MOTHER LOD E W21

#### W/C EXECUTIVE ORDER 8543B

#### BCLR MISS EXECUTIVE D609

#### BCLR MISS JOKER

	CE	BW	WW	YW	ADG	MCE	Milk	MWW	Stay	Doc	YG	Marb	REA	API	TI
EPDs:	12.7	-0.6	82.2	133.8	0.32	5.7	27.2	68.3	19.9	7.3	-0.43	-0.11	0.98	138.6	80.6
Rank:	25	15	25	10	4	50	25	20	15	95	65	95	30	25	25

Very well balanced attractive heifer that goes back to Regan donor. AI'd 5/28/20 to Manifesto. Exposed to Perception from 6/1/20-7/30/20. Ultrasound safe to Manifesto with a bull due 3/7/21.

CE	BW	WW	YW	ADG	MCE	Milk	MWW	Stay	Doc	YG	Marb	REA	API	TI
13.2	-0.55	88.05	134.75	0.29	6.95	30.75	74.75	19.45	11.75	-0.38	0.15	0.93	141.1	83.8

## 65 BCLR MISS G967

ASA#: 3659611 Breed: PB SM DOB: 4/4/19  
Homo Polled Hetero Black

### REMINGTON LOCK N LOAD54U

#### BCLR ARTILLERY E21-3

#### WS MOTHER LOD E W21

#### TNT GUNNER N208

#### BCLR MISS RANDI U818

#### DSR MY SUNSHINE S938

	CE	BW	WW	YW	ADG	MCE	Milk	MWW	Stay	Doc	YG	Marb	REA	API	TI
EPDs:	5.5	4	73.2	113.5	0.25	4.3	22.1	58.6	19.3	11.5	-0.41	-0.01	0.62	119.9	69.6
Rank:	99	95	60	45	35	80	65	65	20	45	75	99	75	75	80

Stout and high performing. AI'd 5/28/20 to Homerun. Exposed to Perception from 6/1/20-7/30/20. Ultrasound safe to Homerun with a bull due 3/7/21.

CE	BW	WW	YW	ADG	MCE	Milk	MWW	Stay	Doc	YG	Marb	REA	API	TI
12.9	0.3	74.4	119.55	0.28	8.35	24.35	61.45	17.4	13.15	-0.27	0.18	0.7	126.8	72.8

## 67 BCLR MISS G970

ASA#: 3659624 Breed: PB SM DOB: 4/7/19  
Homo Polled Homo Black

### REMINGTON LOCK N LOAD54U

#### BCLR ARTILLERY E21-3

#### WS MOTHER LOD E W21

#### SRS RIGHT-ON 22R

#### HRM/TRPH RIGHT ON X009

#### NLC MESMA LG140

	CE	BW	WW	YW	ADG	MCE	Milk	MWW	Stay	Doc	YG	Marb	REA	API	TI
EPDs:	7.5	3.4	76.9	127.8	0.32	1.7	28.4	66.8	20.6	15.4	-0.45	-0.14	0.95	122.7	71.2
Rank:	90	85	45	15	4	99	20	25	10	10	55	95	35	65	70

Great cow family backing this heifer. Maternal brother is herdsire for Quandt Bros. Simmentals. AI'd 5/28/20 to Manifesto. Exposed to Perception from 6/1/20-7/30/20. Ultrasound safe to Perception with a bull due 4/19/21.

CE	BW	WW	YW	ADG	MCE	Milk	MWW	Stay	Doc	YG	Marb	REA	API	TI
10.25	1.25	78.35	123.95	0.29	4.15	27.05	66.15	20.7	12.9	-0.35	0.02	0.83	121.2	70.2

## 64 BCLR MISS ARTILLERY G954

ASA#: 3659515 Breed: PB SM DOB: 3/22/19  
Homo Polled Homo Black

### REMINGTON LOCK N LOAD54U

#### BCLR ARTILLERY E21-3

#### WS MOTHER LOD E W21

#### CCR WIDE RANGE 9005A

#### BCLR MISS WIDE RNGE C541

#### PSR MISS FORCE W905

	CE	BW	WW	YW	ADG	MCE	Milk	MWW	Stay	Doc	YG	Marb	REA	API	TI
EPDs:	11.2	1.3	83.9	137.4	0.33	6.5	21.1	63	21.7	10.9	-0.48	0.02	1.11	145.2	82
Rank:	45	40	20	10	3	35	75	45	3	55	35	65	10	15	20

One of the best numbered heifers in the offering. Dam is 11 years old. AI'd 5/28/20 to Homerun. Exposed to Perception from 6/1/20-7/30/20. Ultrasound safe to Homerun with a bull due 3/7/21.

CE	BW	WW	YW	ADG	MCE	Milk	MWW	Stay	Doc	YG	Marb	REA	API	TI
15.75	-1.05	79.75	131.5	0.32	9.45	23.85	63.65	18.6	12.85	-0.31	0.19	0.95	139.1	78.8

## 66 BCLR MISS G968

ASA#: 3659612 Breed: PB SM DOB: 4/6/19  
Homo Polled Homo Black

### REMINGTON LOCK N LOAD54U

#### BCLR ARTILLERY E21-3

#### WS MOTHER LOD E W21

#### TRIPLE C INVASION R47K

#### BCLR MISS RAYCH U819

#### TNT MISS P82

	CE	BW	WW	YW	ADG	MCE	Milk	MWW	Stay	Doc	YG	Marb	REA	API	TI
EPDs:	8.5	1.6	61.8	95.4	0.21	2.8	21.7	52.5	21.5	12.4	-0.48	0.24	0.92	142.4	72.9
Rank:	80	50	95	85	70	95	70	95	3	35	35	15	40	20	60

Dam is flushmate to Cash Flow's dam. AI'd 5/28/20 to Homerun. Exposed to Perception from 6/1/20-7/30/20. Ultrasound safe to Homerun with a bull due 3/7/21.

CE	BW	WW	YW	ADG	MCE	Milk	MWW	Stay	Doc	YG	Marb	REA	API	TI
14.4	-0.9	68.7	110.5	0.26	7.6	24.15	58.4	18.5	13.6	-0.31	0.3	0.85	137.6	74.2



**BCLR MISS BALDY E704 • BICHLER DONOR FEMALE  
FULL SISTER TO ARTILLERY**



68

**BCLR MISS G975**ASA#: 3659609  
Homo PolledBreed: PB SM  
Homo Black

DOB: 4/14/19

REMINGTON LOCK N LOAD54U

BCLR ARTILLERY E21-3

WS MOTHER LODE W21

TNT TONNER N374

BCLR MISS TRACY T707

BCLR MS PANDA P8

	IND	Ratio
Doc.	2	
BW	94	109
205	729	106

	CE	BW	WW	YW	ADG	MCE	Milk	MWW	Stay	Doc	YG	Marb	REA	API	TI
EPDs:	9.2	2	77.5	117.8	0.25	3.6	21.2	59.9	19.5	9.8	-0.55	-0.13	1.1	124.3	72.8
Rank:	70	60	40	35	35	90	75	60	20	70	10	95	10	60	60

Dam is a tremendous baldy cow who has put many sons and daughters in this sale. AI'd 5/28/20 to Homerun. Exposed to Perception from 6/1/20-7/30/20. Ultrasound safe to Homerun with a bull due 3/7/21.

	CE	BW	WW	YW	ADG	MCE	Milk	MWW	Stay	Doc	YG	Marb	REA	API	TI
	14.75	-0.7	76.55	121.7	0.28	8	23.9	62.1	17.5	12.3	-0.34	0.12	0.94	129	74.3



69

**BCLR BCLR MISS G976**ASA#: 3659474  
Homo PolledBreed: PB SM  
Homo Black

DOB: 4/15/19

REMINGTON LOCK N LOAD54U

BCLR ARTILLERY E21-3

WS MOTHER LODE W21

CDI VEGAS 26X

BCLR MISS VEGAS C531

BCLR MISS STEELE A328

	IND	Ratio
Doc.	2	
BW	81	97
205	656	96

	CE	BW	WW	YW	ADG	MCE	Milk	MWW	Stay	Doc	YG	Marb	REA	API	TI
EPDs:	17	0	77.4	122.5	0.28	8.7	25.6	64.3	16.3	8.7	-0.42	-0.18	0.9	129.6	75.3
Rank:	10	40	35	30	30	20	25	25	40	90	10	99	15	50	50

Really complete Artillery daughter, and with Vegas in her pedigree, she will make a great cow. AI'd 5/28/20 to Homerun. Exposed to Perception from 6/1/20-7/30/20. Ultrasound safe to Homerun with a heifer due 3/7/21.

	CE	BW	WW	YW	ADG	MCE	Milk	MWW	Stay	Doc	YG	Marb	REA	API	TI
	18.65	-1.7	76.5	124.05	0.3	10.55	26.1	64.3	15.9	11.75	-0.28	0.09	0.84	131.1	75.3



70

**BCLR MISS PROCLAMATION G940**ASA#: 3659523  
Homo PolledBreed: PB SM  
Homo Black

DOB: 3/16/19

CCR COWBOY CUT 5048Z

WS PROCLAMATION E202

WS MISS SUGAR C4

CDI VEGAS 26X

BCLR MISS VEGAS C555

BCLR MISS LINTON A308

	IND	Ratio
Doc.	1	
BW	87	104
205	653	95

	CE	BW	WW	YW	ADG	MCE	Milk	MWW	Stay	Doc	YG	Marb	REA	API	TI
EPDs:	13.5	-0.7	70.1	100.9	0.19	8.2	30.7	65.8	20.2	18.1	-0.47	0.15	0.98	147	79.4
Rank:	15	15	75	75	85	15	10	30	10	1	40	30	30	15	30

Great numbered Proclamation daughter who has as much cow potential as any in the sale. AI'd 5/28/20 to Homerun. Exposed to Perception from 6/1/20-7/30/20. Ultrasound safe to Homerun with a bull due 3/7/21.

	CE	BW	WW	YW	ADG	MCE	Milk	MWW	Stay	Doc	YG	Marb	REA	API	TI
	16.9	-2.05	72.85	113.25	0.25	10.3	28.65	65.05	17.85	16.45	-0.3	0.26	0.88	140.3	77.5





**LOT 71**

## 71 BCLR MISS TRAILBLAZER G980

ASA#: 3659497 Breed: PB SM DOB: 4/25/19  
Homo Polled Hetero Black

TJ MAKERS MARK 215Y  
CDI/LCDR TRAILBLAZER 217E  
CDI MS GUNNER 2S

BCLR LINTON Y513-2  
BCLR MISS LINTON B432  
KS HANNAH Y337

	IND	Ratio
Doc.	1	
BW	91	106
205	805	117

	CE	BW	WW	YW	ADG	MCE	Milk	MWW	Stay	Doc	YG	Marb	REA	API	TI
EPDs:	7.4	3.8	96.7	135.9	0.24	4.3	28.1	76.3	22	10.5	-0.38	-0.06	0.91	131.9	82.7
Rank:	90	90	2	10	45	80	20	3	2	60	85	85	45	40	20

This baldy heifer is as pretty as her picture. She is a hard one to part with. AI'd 5/28/20 to Manifesto. Exposed to Perception from 6/1/20-7/30/20. Ultrasound safe to Manifesto with bull/heifer twins due 3/7/21.

	CE	BW	WW	YW	ADG	MCE	Milk	MWW	Stay	Doc	YG	Marb	REA	API	TI
	10.55	1.65	95.3	135.8	0.25	6.25	31.2	78.75	20.5	13.35	-0.35	0.18	0.9	138.2	85.1

## 72 BCLR MISS COLORADO G904

ASA#: 3659645 Breed: 3/4 SM 1/4 AN DOB: 2/22/19  
Homo Polled Homo Black

HOOK'S BOZEMAN 8B  
COLORADO BRIDLE BIT E752  
BRIDLE BIT MISS B452

S A V PROVIDENCE 6922  
BCLR MISS PROV Z233  
GSR MS JOKER 113L

	IND	Ratio
Doc.	2	
BW	65	TW
205	587	TW

	CE	BW	WW	YW	ADG	MCE	Milk	MWW	Stay	Doc	YG	Marb	REA	API	TI
EPDs:	13.2	-2.3	64	94.3	0.19	8.6	23.7	55.6	17.2	14	-0.32	0.17	0.66	130	71.7
Rank:	35	10	85	85	90	20	40	70	25	25	30	75	55	45	70

Twin to lot 72. Granddam is G113 donor. AI'd 5/28/20 to Homerun. Exposed to Perception from 6/1/20-7/30/20. Ultrasound safe to Perception with a bull due 3/25/21.

	CE	BW	WW	YW	ADG	MCE	Milk	MWW	Stay	Doc	YG	Marb	REA	API	TI
	13.1	-1.6	71.9	107.2	0.22	7.6	24.7	60.55	19	12.2	-0.29	0.18	0.68	131.1	73.2

## 73 BCLR MISS COLORADO G903

ASA#: 3659644 Breed: 3/4 SM 1/4 AN DOB: 2/22/19  
Homo Polled Homo Black

HOOK'S BOZEMAN 8B  
COLORADO BRIDLE BIT E752  
BRIDLE BIT MISS B452

S A V PROVIDENCE 6922  
BCLR MISS PROV Z233  
GSR MS JOKER 113L

	IND	Ratio
Doc.	2	
BW	65	TW
205	580	TW

	CE	BW	WW	YW	ADG	MCE	Milk	MWW	Stay	Doc	YG	Marb	REA	API	TI
EPDs:	13.2	-0.5	70	103.8	0.21	8.6	23.7	58.7	17.4	10.7	-0.3	0.18	0.64	130.1	73.5
Rank:	35	35	60	70	80	20	40	50	25	70	35	75	60	45	60

Twin to lot 73. Granddam is G113 donor. AI'd 5/28/20 to Homerun. Exposed to Perception from 6/1/20-7/30/20. Ultrasound safe to Perception with a heifer due 4/21/21.

	CE	BW	WW	YW	ADG	MCE	Milk	MWW	Stay	Doc	YG	Marb	REA	API	TI
	13.1	-0.7	74.9	111.95	0.23	7.6	24.7	62.1	19.1	10.55	-0.28	0.18	0.67	130.9	73.9



**LOT 73**





**LOT 74**

## 74 BCLR MISS EVENT G915

ASA#: 3659516 Breed: 3/4 SM 1/4 AN DOB: 2/27/19  
Homo Polled Homo Black

MR NLC UPGRADE U8676

TJ MAIN EVENT 503B

TJ MISS NEW DAY U14

HSF HIGH ROLLER 12T

WS MOTHER LODGE W21

WS MISS BEEFWAY T7

	IND	Ratio
Doc.	1	
BW	69	ET
205	664	ET

	CE	BW	WW	YW	ADG	MCE	Milk	MWW	Stay	Doc	YG	Marb	REA	API	TI
EPDs	12.2	-2.5	65.6	94.2	0.18	5.2	27.5	60.3	20	13.7	-0.39	0.09	0.67	131.1	71.4
Rank	50	10	80	85	95	80	15	45	4	25	15	90	55	45	70

Sale feature! Only because we are flushing her full sister are we able to part with this heifer. The opportunity to buy a direct W21 daughter will be unlikely after this sale, so do not pass her by. She will make a tremendous cow, and her Manifesto bull calf only sweetens the deal. AI'd 5/28/20 to Manifesto. Exposed to Perception from 6/1/20-7/30/20. Ultrasound safe to Manifesto with a bull due 3/7/21.

CE	BW	WW	YW	ADG	MCE	Milk	MWW	Stay	Doc	YG	Marb	REA	API	TI
12.95	-1.5	79.75	114.95	0.22	6.7	30.9	70.75	19.5	14.95	-0.36	0.25	0.78	143.2	81.8



**LOT 75**



DAM OF LOT 74  
WS MOTHER LODGE W21



SISTER OF LOT 74  
BCLR MISS EVENT F818

## 75 BCLR MISS REVELATION G928

ASA#: 3659478 Breed: 3/4 SM 1/4 AR DOB: 3/2/19  
Homo Polled Hetero Black

CCR WIDE RANGE 9005A

BCLR REVELATION D21-3

WS MOTHER LODGE W21

WS BEEF KING W107

BCLR MISS BEEF KING A303

MISS BHR JUDGE 921

	IND	Ratio
Doc.	1	
BW	89	102
205	669	98

	CE	BW	WW	YW	ADG	MCE	Milk	MWW	Stay	Doc	YG	Marb	REA	API	TI
EPDs	11.4	1.8	65.2	99.9	0.22	6.7	21.6	54.2	20.5	11.5	-0.4	0.11	0.95	125.3	66.2
Rank	60	80	80	80	75	50	60	75	3	55	15	85	10	60	90

High performing Revelation daughter out of a perfect-footed, heavy milking dam. AI'd 5/28/20 to Manifesto. Exposed to Perception from 6/1/20-7/30/20. Ultrasound safe to Manifesto with a bull due 3/7/21.

CE	BW	WW	YW	ADG	MCE	Milk	MWW	Stay	Doc	YG	Marb	REA	API	TI
12.55	0.65	79.55	117.8	0.24	7.45	27.95	67.7	19.75	13.85	-0.36	0.26	0.92	140.4	79.2





UDDER OF LOT 76'S DAM • BCLR MISS BF MKR Y108

76

## BCLR MISS REVELATION G942

ASA#: 3659632  
Homo Polled

Breed: 3/4 SM 1/4 AR  
Hetero Black

DOB: 3/17/19

### CCR WIDE RANGE 9005A

#### BCLR REVELATION D21-3

#### WS MOTHER LODGE W21

#### WS BEEF MAKER R13

#### BCLR MISS BF MKR Y108

#### TBS MS GOLDEN ROD 1413

	IND	Ratio
Doc.	2	
BW	79	91
205	625	91

	CE	BW	WW	YW	ADG	MCE	Milk	MWW	Stay	Doc	YG	Marb	REA	API	TI
EPDs:	14.5	-1.2	55.3	82.1	0.17	8.7	22.8	50.4	18.1	16.1	-0.37	0.19	0.73	129.8	66.1
Rank:	25	25	99	99	95	20	50	90	20	10	20	75	40	50	90

This heifer's dam is one of my favorites. G942 is very well balanced and attractive. AI'd 5/28/20 to Manifesto. Exposed to Perception from 6/1/20-7/30/20. Ultrasound safe to Manifesto with a bull due 3/7/21.

CE	BW	WW	YW	ADG	MCE	Milk	MWW	Stay	Doc	YG	Marb	REA	API	TI
14.1	-0.85	74.6	108.9	0.22	8.45	28.55	65.8	18.55	16.15	-0.35	0.3	0.81	142.5	79.1

77

## BCLR MISS PGRID G961

ASA#: 3659536  
Homo Polled

Breed: 3/4 SM 1/4 AN  
Homo Black

DOB: 3/25/19

### S A V NET WORTH 4200

#### TJ POWER GRID 363Y

#### TJ 15T

#### LBR CROCKETT R81

#### CDI MS CROCKET 110U

#### CDI MISS SHEAR FORCE 14N

	IND	Ratio
Doc.	1	
BW	78	ET
205	638	ET

	CE	BW	WW	YW	ADG	MCE	Milk	MWW	Stay	Doc	YG	Marb	REA	API	TI
EPDs:	10.3	0.8	54.5	81.1	0.17	6.7	23.7	50.8	18.3	10.5	-0.34	-0.03	0.72	108.5	57.1
Rank:	75	60	99	99	95	50	40	90	15	70	25	99	45	90	99

Flushmate to lots 40 and 77. Full sister to Perception's dam. AI'd 5/28/20 to Homerun. Exposed to Perception from 6/1/20-7/30/20. Ultrasound safe to Homerun with a bull due 3/7/21.

CE	BW	WW	YW	ADG	MCE	Milk	MWW	Stay	Doc	YG	Marb	REA	API	TI
15.3	-1.3	65.05	103.35	0.24	9.55	25.15	57.55	16.9	12.65	-0.24	0.17	0.75	126.9	69

78

## BCLR MISS PGRID G965

ASA#: 3659464  
Homo Polled

Breed: 3/4 SM 1/4 AN  
Homo Black

DOB: 4/2/19

### S A V NET WORTH 4200

#### TJ POWER GRID 363Y

#### TJ 15T

#### LBR CROCKETT R81

#### CDI MS CROCKET 110U

#### CDI MISS SHEAR FORCE 14N

	IND	Ratio
Doc.	1	
BW	85	ET
205	658	ET

	CE	BW	WW	YW	ADG	MCE	Milk	MWW	Stay	Doc	YG	Marb	REA	API	TI
EPDs:	10.5	2.1	63.1	93.5	0.19	6.6	23.7	55.1	20.8	8.2	-0.26	0.02	0.78	117.1	61.5
Rank:	75	85	85	90	90	55	40	70	2	90	50	95	30	75	95

Flushmate to lots 40 and 78. Full sister to Perception's dam. AI'd 5/28/20 to Manifesto. Exposed to Perception from 6/1/20-7/30/20. Ultrasound safe to Manifesto with a heifer due 3/7/21.

CE	BW	WW	YW	ADG	MCE	Milk	MWW	Stay	Doc	YG	Marb	REA	API	TI
12.1	0.8	78.5	114.6	0.23	7.4	29	68.15	19.9	12.2	-0.29	0.22	0.83	136.4	77







LOT 79

## 79 BCLR MISS ARTILLERY G952

ASA#: 3659512 Breed: 7/8 SM 1/8 AN DOB: 3/21/19  
Hetero Polled Hetero Black

REMINGTON LOCK N LOAD54U

BCLR ARTILLERY E21-3

WS MOTHER LODE W21

W/C UNITED 956Y

BCLR MISS UNITED C529

BCLR MISS VEGAS A326

	IND	Ratio
Doc.	1	
BW	89	105
205	807	118

	CE	BW	WW	YW	ADG	MCE	Milk	MWW	Stay	Doc	YG	Marb	REA	API	TI
EPDs:	12	0.2	88.7	135.5	0.29	6.3	26.4	70.7	15.8	13.8	-0.33	0.06	0.73	137.8	86.5
Rank:	55	45	10	10	25	60	20	5	45	25	30	95	40	30	10

What a tank! By far the heaviest and biggest middled bred in the offering. AI'd 5/28/20 to Manifesto. Exposed to Perception from 6/1/20-7/30/20. Ultrasound safe to Manifesto with a bull due 3/7/21.

	CE	BW	WW	YW	ADG	MCE	Milk	MWW	Stay	Doc	YG	Marb	REA	API	TI
	12.85	-0.15	91.3	135.6	0.28	7.25	30.35	75.95	17.4	15	-0.33	0.24	0.81	141	86.9

## 81 BCLR MISS G982

ASA#: 3659555 Breed: 5/8 SM 1/4 AN 1/8 AR DOB: 5/18/19  
Homo Polled Hetero Black

TJ POWER GRID 363Y

BCLR POWER GRID D611-1

BCLR MISS SHANIA S611

MR NLC ENTREPRENEUR 1227

BCLR MISS ENT D616

KS HANNAH Y337

	IND	Ratio
Doc.	2	
BW	83	99
205	588	86

	CE	BW	WW	YW	ADG	MCE	Milk	MWW	Stay	Doc	YG	Marb	REA	API	TI
EPDs:	13.2	1.8	81.6	128.7	0.29	9.1	23.3	64.1	18.5	8.2	-0.21	0.35	0.7	143.1	82
Rank:	35	80	20	20	25	15	45	25	15	90	65	40	45	25	25

Granddam is Y337 donor. AI'd 5/28/20 to Homerun. Exposed to Perception from 6/1/20-7/30/20. Ultrasound safe to Homerun with a bull due 3/7/21.

	CE	BW	WW	YW	ADG	MCE	Milk	MWW	Stay	Doc	YG	Marb	REA	API	TI
	16.75	-0.8	78.6	127.15	0.3	10.75	24.95	64.2	17	11.5	-0.17	0.36	0.74	144.2	81.3



LOT 80

## 80 BCLR MISS G971

ASA#: 3659524 Breed: 5/8 SM 1/4 AR 1/8 AN DOB: 4/7/19  
Homo Polled Hetero Black

REMINGTON LOCK N LOAD54U

BCLR ARTILLERY E21-3

WS MOTHER LODE W21

TNT AXIS X307

BCLR MISS AXIS C557

RUST MISS 213Z

	IND	Ratio
Doc.	1	
BW	88	102
205	653	95

	CE	BW	WW	YW	ADG	MCE	Milk	MWW	Stay	Doc	YG	Marb	REA	API	TI
EPDs:	10.9	1.8	89.5	146	0.35	6.7	20.4	65.1	16.7	13.6	-0.29	0.23	0.89	134.7	83.9
Rank:	70	80	5	3	3	50	75	20	35	25	40	65	15	35	15

Sweetheart! Love her cow family and her sweet disposition. AI'd 5/28/20 to Manifesto. Exposed to Perception from 6/1/20-7/30/20. Ultrasound safe to Manifesto with a heifer due 3/7/21.

	CE	BW	WW	YW	ADG	MCE	Milk	MWW	Stay	Doc	YG	Marb	REA	API	TI
	12.3	0.65	91.7	140.85	0.31	7.45	27.35	73.15	17.85	14.9	-0.31	0.32	0.89	145.1	88

## 82 PICK OF THE HEIFER CALVES

Pick of the heifer calves: The lucky high bidder will receive the opportunity to pick their favorite heifer calf from our entire 2020 calf crop. None of these heifers have been offered prior to this sale. We have something for everyone in this offering with over 100 heifer calves to choose from. Fresh pedigrees, outcross genetics, and ET daughters of our most well-known donors are among the offering. To make this offer even better, we are giving the buyer the opportunity to double their bid and take a second pick as well! We would like the selection to be done by March 1, 2021, and we reserve the right to collect a minimum of 10 grade-one embryos at the buyer's convenience and the seller's expense.





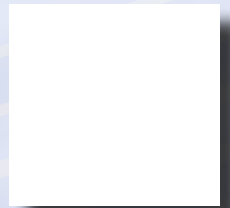
# BICHLER

SIMMENTALS & RED ANGUS

130 83<sup>rd</sup> Street SE  
Linton, N.D. 58552

**Return Service Requested**

**Time Sensitive  
Please Deliver Immediately**



[www.bichlersimmentals.com](http://www.bichlersimmentals.com)

 /bichlersimmentals •  /bichlersimmentals