



North
Dakota
Simmental
Association

Classic SALE

Saturday, December 13, 2014 | 2:00 pm (approx.)

Kist Livestock, Mandan, ND

Sale Immediately Follows the

ND Red Angus Select Sale | Noon CST

Welcome!

On behalf of the sale consignors I would like to welcome you to the 2014 North Dakota Simmental Association Classic Sale! 2014 marks the 43rd Anniversary of the North Dakota Simmental Association; and many of the consignors that are involved stem from families that have been involved in it from the start.

You will notice a new venue with us sharing the sale date and facility with the ND Red Angus Association as their Red Select Sale will start at noon and the ND Simmental Classic following right after. There are two great sets of cattle for both events!! The two breeds compliment each other very well and the consignors have been great to work with!

This North Dakota Simmental Classic Sale has developed a reputation as being a source of some of the top Simmental/SimAngus genetics available in the land. The offering has been selected from the heart of some of the top programs in the upper Midwest! The cowherds represented here present some of the top bull sales in the country each and every year!

I would also like to point out that many of the individuals selected for this sale go back to or are out of females that were purchased in this sale; a testimonial that these cattle will work!

There has never been a better time to be involved in the beef industry! The cow numbers are at an all time low and we are continue to see record prices for feeder calves and commercial producers all over are searching for top end genetics to use in

their programs to take advantage of the times. As seedstock producers you will find the offering of this sale provides the source for those top end bulls and females that will assist you in providing those genetics to your customers.

If you are looking for bred heifers to produce bulls for the commercial and seedstock industry this offering has a lot of opportunities for you. The open heifers have some outstanding show heifer prospects for Junior programs and there will be something to fit your needs and will make tremendous cows as they develop. Keep in mind the great opportunities for Juniors with the Futurity program.

A couple items I would like to bring to your attention regarding this years sale is that it will be broadcast on DV Auctions for those of you that may want to participate over the internet. Also we will be posting updated photos and any video clips available on the North Dakota Simmental Association website: www.northdakotasimmental.com

We invite you to be with us on December 12, 2014 as well for the NDSA Annual Meeting and Banquet. We encourage you to contact any of the consignors or sales staff if you have questions regarding this year's offering and look forward to seeing you on December 13th!

Sincerely;
Jeff Thomas and the Consignors of the 2014 NDSA Classic Sale

Junior Futurity Show

Attention junior exhibitors, make sure to purchase your ND Futurity show heifer at the ND Classic Sale!

As in the past few years, the members of the ND Simmental Classic Sale and the members of the Northwest Select Sale will be holding a junior futurity show in conjunction with the ND State Fair show. All open females sold in these two sales will be eligible to compete at the ND State Fair in July 2015. The number of entries determines the number of classes and there is a \$10/head entry fee. The show will be immediately following the NDJSA Show.

**There are cash prizes for the top six placings:
Champion - \$600, Reserve Champion - \$500, Third Place - \$400, Fourth Place - \$300, Fifth Place - \$200**

All competitors must be members of the ND Junior Simmental Association and the cost of the membership is \$5.00. We hope to see you at the ND State Fair and good luck!

For more information, contact
NDSA Secretary, Kim Myers 701-308-1018

Remember to Attend the NDSA Annual Meeting & Banquet

Join us for the **Annual Meeting on Friday, December 12, 2014 at 12:00 noon at Circle Diamond Ranch Supply, 4228 Memorial Hwy, Mandan, ND.** Located across the road from Kist Livestock. Watch the NDSA website for the annual meeting agenda items - www.northdakotasimmental.com.

Lunch will be served at Circle Diamond beginning at 11:00 am. Following the meeting, participate in a hands on ASA Herdbook Services Workshop. Computers are encouraged, but not mandatory.

Remember to attend the **Social and Banquet on Friday night at the Ramkota Hotel in Bismarck. Social starts at 6:00 pm and the banquet starts at 7:00 pm.** Great food, great fellowship and awards presentation.

North Dakota Simmental Association Classic SALE

*Saturday, December 13, 2014
Kist Livestock, Mandan, ND
Sale Immediately Follows the
ND Red Angus Select Sale*

Location

Kist Livestock

1715 40th Ave SE | Mandan, ND 58554
Phone: 701-663-9573
www.kistlivestockauction.com

Schedule

Friday, December 12, 2014

10:00 am – 6:00 pm Viewing of Cattle
11:00 am Lunch – Sponsored by NDSA, at Circle Diamond
Ranch Supply
12:00 pm NDSA Annual Meeting at Circle Diamond Ranch Supply
6:00 pm Social at the Ramkota Hotel
7:00 pm Banquet at the Ramkota Hotel

Saturday, December 13, 2014

8:00 am Viewing of Cattle
11:00 am Lunch
12:00 noon ND Red Select Sale
2:00 pm (approximately) NDSA Classic Sale

Sale Consultant

Jim Suver, Arlington, NE 402-690-7354

Sale Representatives

Jeff Thomas, Farm & Ranch Guide 406-581-8859 (M)
Todd Finke, Special Assignment 701-240-7711 (M)
Kris Petersen, Cattle Business Weekly 701-339-0305
Scott Ressler, ND Stockmen's Association 701-391-7310
Steve Koester, Special Assignment 701-400-1611
Russ Danielson, ASA Field Representative 701-261-2742

Auctioneer

Col. Tracy Harl, Hastings, NE 402-469-3852

Special Representatives

JR Aufforth, ND Simmental Assoc. President . . 701-377-2870
Roger Finke, ASA Board of Directors
Erika Kenner, ASA Board of Directors
Luke Keller, ASA Director of Seedstock and Industry Operations
. 406-599-2394

Designed By...

Emily Brinkman

419-967-0141 | www.emilybrinkman.com

Sale Headquarters

Best Western Ramkota

800 S. Third Street | Bismarck, ND 58504
Phone: 701-258-7700
Ask for NDSA Rate

Surrounding Hotels

Located in Bismarck, ND

Best Western Double Wood: 1-701-258-7000

Expressway Inn: 1-800-456-6388

Expressway Suites: 1-888-774-556

Air Transportation

Bismarck is served by Delta, Allegiant and United Express and has excellent facilities for light aircrafts.

Terms

All cattle sell under the Suggested Terms and Conditions of the American Simmental Association.

EPDs

The EPDs listed are the new Fall 2014 numbers. Please note the EPDs may change from the time the sale catalog is printed until registration papers are transferred.

Canadian Export

Maple leaf designates eligible for Canada. Contact the consign- or for Canadian export arrangements. Health expenses will be paid by the buyer, unless other arrangements are made with the seller.

Announcements

Announcements made from the auction block during the sale takes precedence over printed material in the catalog or other printed material associated with this sale. Anyone attending this sale attends at their own risk. Breeders and sales staff will not be held responsible for any personal injury for attending this sale.

Insurance

Insurance will be available on sale day. Cattle not paid for the day of the sale will be required to have insurance for the purchase price. Any animals not settled at the sale will be insured for 60 days at the buyers expense.

Website

View catalog online at www.northdakotasimmental.com

Consignors

A/H Cattle Company

Andrew & Jenni Hansen
Claremont, SD
605-294-5295 | 605-448-8391
lazyh3@msn.com
www.hansen-ranch.com
Bull Sale: February 1, 2015 - Claremont, SD
Lots: 28, 29, 30, & 46

Bailey Show Cattle

Scott Bailey | Braden Bailey
Towner, ND
701-537-3067
jbailey@srt.com
Lots: 76 & 86

Bichler Simmentals

Doug Bichler
Linton, ND
701-254-4306
dougichler@hotmail.com
www.johnson-bichlersimmentals.com
Bull Sale: February 12, 2015 - Linton, ND
Lots: 58 & 79

Black Tie Simmentals

Pat & Lori Thorson
Kindred, ND
701-371-8230
pat.thorson@westcentralag.com
www.blacktielcattle.com
Bull Sale: February 9, 2015 - Valley City, ND
Lots: 61 & 62

BNC Livestock

Brian & Courtney Kuelbs
Clarissa, MN
320-333-2972
bkuelbs@hotmail.com
czimmer_9@hotmail.com
Lot: 82

C Diamond Ranch

Chris & Julia Nicholson
Dawson, ND
701-391-6904
cnn2005@hotmail.com
www.cdiamondranch.com
Bull Sale: February 11, 2015 - Napoleon, ND
Lot: 3

Doll Simmental Ranch

Charlie & David Doll
New Salem, ND
701-843-8673 | 701-843-7947
dollboy3@westriv.com
www.dollranch.net
Bull Sale: March 3, 2015 - Mandan, ND
Lots: 4, 37, & 39

Double J Farms

Kipp Julson
Garretson, SD
605-351-9088
doublejfarms@alliancecom.net
www.doublejsimmentals.com
Bull Sale: January 31, 2015 - Garretson, SD
Lots: 42, 44, 56 & 80

Double T Simmentals

Tim & Tam Clark
Turtle Lake, ND
701-448-2815
Timc@hubbardfeeds.com
www.doubletsimmentals.com
Bull Sale: February 28, 2015 - Turtle Lake, ND
Lots: 60 & 68

Ekstrum Simmentals

Clay Ekstrum
Kimball, SD
605-730-1511
clayekstrum@midstatesd.net
www.ekstrumsimmentals.com
Bull Sale: February 14, 2015 - Kimball, SD
Lots: 14, 20 & 43

Ellingson Simmentals

Terry & DeeAnn Ellingson
Dahlen, ND
701-384-6225 | 701-741-3045 (cell)
tellings@polarcomm.com
www.ellingsonsimmental.com
Bull Sale: February 21, 2015 - Rugby, ND
Lots: 9 & 21

Finke Cattle

Todd & Kelly Finke
Berthold, ND
701-240-7711
toddandkelly@srt.com
Bull Sale: February 9, 2015 - Mandan, ND
Lots: Donation, 1A, 2A/B

G&D Simmentals

Derik & Gretta Samuelson
Perry & Barb Thomas
Calvin, ND
701-697-5381 | 701-370-9031
s_derik@hotmail.com
Cattle sell privately off farm
Lots: 16 & 17

Gregg Family Simmental

KC Gregg
Eureka, SD
605-848-0901
kcgregg@dakotalandfeeds.com
www.greggfamilysimmentals.com
Lots: 22, 50, 85 & 88

Hansen Simmental Ranch

Kevin & Cody Hansen
Ryder, ND
701-758-2571
hsrsimm@restel.net
www.dakotaxpress.com
Bull Sale: February 20, 2015 - Mandan, ND
Lots: 23, 33 & 83

Homestake Ranch

Keith & Amanda Larsen
Wolsey, SD
605-350-5517
kllarsen1041@jacks.sdstate.edu
Lots: 48, 49 & 69

Kaelberer Ranch

Clay & Michelle Kaelberer
New Salem, ND
701-843-8342 | 701-220-3124
kaelbererranch@outlook.com
Bull Sale: February 9, 2015 - Mandan, ND
Lot: 57

Keller Broken Heart Ranch

Dwight Keller
Mandan, ND
701-445-7350
kbhr@westriv.com
www.kbhrsimmmental.com
Bull Sale: March 9, 2015 - Mandan, ND
Lot: 51

Kenner Simmental Ranch

Roger & Jeanette Kenner | Erika Kenner
Leeds, ND

701-466-2800 (Roger)

406-581-1188 (Erika)

erika.kenner@gmail.com

www.kennersimmental.com

Bull Sale: February 14, 2015 - Leeds, ND

Lots: 24 & 34

Kline Simmental Ranch

Matt, Emily & Eddy Kline

Monty & Terri Kline

Hurdsfield, ND

701-693-6317

klsrcows@gmail.com

www.klsrcows.com

Bull Sale: February 15, 2015 - Hurdsfield, ND

Lots: 64 & 66

KNH Simmentals

Kent & Heather Neshem

Jaden, Dawson, Jamison & Addison

Berthold, ND

701-453-3570 | 701-340-0756 (cell)

hneshem@srt.com

www.knhsimmentals.com

Bull Sale: February 9, 2015 - Mandan, ND

Lots: 41A/B, 53 & 72A/B

Mandan Lake Simmental

Wade & Merri Staigle

Center, ND

701-794-3351

mandanlakeranch@westriv.com

www.dakotaxpress.com

Bull Sale: February 20, 2015 - Mandan, ND

Lots: 25 & 47

Nesemeier Cattle Ranch

Valley Ridge Simmentals

Mark Nesemeier

Leonard, ND

701-645-2286 | 701-361-9895

valleyridgesim@live.com

www.valleyridgesimmentals.com

Bulls sell privately off farm.

Lot: 26

Northern Plains Simmental

JR & Miranda Aufforth

Bowbells, ND

701-377-2870

npsimm@gmail.com

www.npsimm.com

Bull Sale: April 5, 2015 - Bowbells, ND

Lots: 12, 13 & 32

Rockin R Cattle Company

Michelle & Larry Tourdot

Reedsburg, WI

608-253-5025 | 608-432-2853

Cattle sell privately off farm

Lots: 40, 70 & 71

Rocky Knoll Cattle

Beth & Cody Baloun

Highmore, SD

605-871-9896 (Beth)

605-870-3092 (Cody)

cbaloun@venturecomm.net

www.rockyknollcattle.com

Bull Sale: March 2015

Lots: 27, 63, 81 & 84

Rust Mountain View Ranch

Josh & Trista Rust

Mercer, ND

701-447-2479

rustmountainviewranch@hotmail.com

www.rustmountainviewranch.com

Bull Sale: March 27, 2015 - Turtle Lake, ND

Lots: 73 & 74

Rydeen Farms

Paul & Lois Rydeen

Clearbrook, MN

218-776-3338

rydeen@gvtel.com

www.rydeenfarms.com

Bull Sale: February 8, 2015 - Clearbrook, MN

Lots: 35 & 38

Schmidt Simmentals

Rick Schmidt

Center, ND

701-207-0010

rick.schmidt@ndsu.edu

Cattle sell privately off the farm.

Lots: 31, 67 & 87

Stangeland Simmentals

Lucas & Amy Stangeland

Glenfield, ND

701-649-0264

lstangeland@ymail.com

Bulls sell privately off farm

Lots: 54 & 75

Stavick Simmentals

Mike Stavick

Veblen, SD

605-237-4663

stavickx@tnics.com

www.stavicksimmental.com

Bull Sale: February 5, 2015 - Aberdeen, SD

Lots: 8 & 11

Sys Simmentals

Derek & Jen Sys | Gary & Nan Sys

Sawyer, ND

701-722-5533 | 701-722-3244

dj.sys@hotmail.com | sys@srt.com

www.sysimmentals.com

Bull Sale: February 11, 2015 - Douglas, ND

Lots: 77 & 78

Thomas Livestock Services

Jeff Thomas

Bozeman, MT

406-581-8859

jdthomas@bresnan.net

Lots: 1B/C & 2C

Traxinger Simmental

Mike Traxinger

Houghton, SD

605-885-6347 | 605-294-7227

mtrax@nvc.net | www.traxinger.com

Bull Sale: February 11, 2015 - Houghton, SD

Lots: 5A/B, 15, & 36

Triple H Simmentals

Kelly, Jerry, & Bryan Hanson

Hannaford, ND

701-769-2241 | 701-789-1391

kelly.hanson@centralplainsag.net

www.triplehsimmentals.com

Bull Sale: February 9, 2015 - Valley City, ND

Lots: 7, 55 & 59

Ulmer Cattle Services

Steve Ulmer

Oakes, ND

701-678-4652

fran_brummund@yahoo.com

Cattle sell privately off the farm

Lot: 65

Western Cattle Source

Jock & Brenda Beeson

Crawford, NE

308-665-1111

wcsbeeson@bbc.net

www.showcattlepage.com/westerncattle

Cattle sell privately off farm

Lots: 10, 18, 19, & 45

Zimmer Family Simmentals

Neil & Maggie Zimmer

Clarissa, MN

218-756-2565 | 218-639-8418

zimmer1@hotmail.com

Lots: 6 & 52

Donation Lot

D SRF Time Traveler 445B

Consignor: Finke Cattle - Berthold, ND

BD: 2/27/14 • ASA#: 2885584 • Tattoo: 445B • Open
3/8 SM 5/8 AN • Black • Polled • Adj. BW: 100 • Adj. WW: 620

LRS TIMETRAVELER 37X

{ HTP SVF IN DEW TIME
LRS MS TRAVELER 604S

BRUSETT ERISKAY U658

{ CONNEALY DANNY BOY
BRUSETT ERISKAY P658

CE	BW	WW	YW	MCE	Milk	MWW	CW	YG	MARB	STAY	API	TI
9	2.6	73	105	6	13	50	36.0	-0.02	0.40		111	71

• We are honored to provide the donation heifer this year in support of our State Association. 445B should make an excellent addition to the lucky winners herd as the Time Traveler daughters we have are making tremendous young females.

Donation Heifer Auction Procedure

- The final bid in each round will denote the amount of that bidder's donation.
Round 1 – Final bid is \$300 to John Doe. John's donation is \$300.
Round 2 – Final Bid is \$250 to Joe Public. Joe's donation is \$250
Subsequent Rounds – the female is re-auctioned until no further bids are received at the low of \$10.
- Each \$10 donation represents one chance in the final draw.
In the example above, John has 30 changes and Joe has 25.
- One ticket for each \$10 donated, bearing the contributor's name, will be put into the drawing.
- At the end of the sale, one ticket will be drawn and that person will win the heifer.

If you're unable to attend the sale and would like to bid on the donation lot, please contact:

NDSA Secretary, Kim Myers 701-308-1018 | gkmyers@outlook.com
12066 57th St SE | Kathryn, ND 58049



HTP SVF In Dew Time- Reference Grandsire

Thank you...

Todd Finke and family for the
2014 donation female!

Watch & bid online for FREE at

DVAuction
Broadcasting Real-Time Auctions

Can't make the sale? Bid from home with DV Auction's "real-time" internet bidding service!

Buying online is as easy as 1, 2, 3...

1. Create an account at www.dvauction.com under the "register" tab
2. Apply for bidding approval by clicking on the "details" tab at least 24 hours prior to the auction-a DV representative will notify you once you have been approved
3. Tune in for the sale and make your purchases!

After the sale, contact the sale manager or owner to arrange transportation and payment. **High speed internet** is required for successful bidding-be sure to check the lag-time monitor in the top left corner to ensure real-time broadcasts.

Proxy Bidding-if you can't make time to watch the sale, register a proxy bid and let our system represent your bid while you're away. Look for the "proxy bid" tab on the auction listing, and fill in your maximum bids. We'll handle the rest!

Having troubles? During the auction, you can type a message to the operator at any time for assistance. Our full-time support team can also always be reached at (402) 474-5557.



DVAuction
Broadcasting Real-Time Auctions

Full Service Livestock Marketing

Video - Photography - The Stock Exchange - Ring Service - Banner Ads - Onsite Viewing Service

Semen & Embryos



RDDS Future Prototype - Reference Sire



Circle S Leachman 600U - Reference Sire

1A RDDS Future Prototype 13M - Semen

Consignor: Finke Cattle - Berthold, ND

BD: 4/11/02 • ASA#: 2170197 • Tattoo: 13M • Semen
1/2 SM 1/2 AN • Black • Homo Polled • Adj. BW: 96 • Adj. WW: 758

GW LUCKY DICE 187H { LCHMAN LUCKY BUCK 7049C
407D

C M MERLE 777E { D H D TRAVELER 6807
MERLE D H D 4844

CE	BW	WW	YW	MCE	Milk	MWW	CW	YG	MARB	STAY	API	TI
14.2	-0.1	62.7	90.3	10.7	20.5	51.8	23.3	-0.17	0.54		148	75.1

• Selling 4 units of semen.

1B RDDS Future Prototype 13M - Semen

Consignor: Thomas Livestock Services - Bozeman, MT

• Selling 7 units of semen.

1C RDDS Future Prototype 13M - Semen

Consignor: Thomas Livestock Services - Bozeman, MT

• Selling 8 units of semen.



Hooks Mika 141M - Reference Donor

2A Circle S Leachman 600U - Semen

Consignor: Finke Cattle - Berthold, ND

BD: 3/20/86 • ASA#: 1140615 • Tattoo: 133U • Semen
PB SM • Homo Black • Homo Polled • Adj. BW: 85 • Adj. WW: 593

LANDRIDGE JET BLACK { SINGLETREE SMOKE
LANDRIDGE ONYX 261K

BDV R52 MS BLACK KNIGHT { STEELMAN
BDV M2

CE	BW	WW	YW	MCE	Milk	MWW	CW	YG	MARB	STAY	API	TI
11.5	2.3	60.8	93.5	10.8	23.6	54	29.2	-0.31	0.17	20.6	126.1	66.8

• Selling 10 units of semen.

2B Circle S Leachman 600U - Semen

Consignor: Finke Cattle - Berthold, ND

• Selling 11 units of semen.

2C Circle S Leachman 600U - Semen

Consignor: Thomas Livestock Services - Bozeman, MT

• Selling 10 units of semen.

3 Hooks Mika 141M x TNT Axis X307

Consignor: C Diamond Ranch - Dawson, ND

PB SM • Embryos

TNT AXIS X307 { TNT TUITION U238
TNT MISS U27

HOOKS MIKA 141M { HOOKS SHEAR FORCE 38K
HOOKS IRISH MAXINE 29K

CE	BW	WW	YW	MCE	Milk	MWW	CW	YG	MARB	STAY	API	TI
11.25	-0.6	68.15	95.9	12.5	33.35	67.45	25.5	-0.37	0.28		138.1	75

• Selling 5 embryos - guaranteeing 2 pregnancies.

• Here is an exciting opportunity to add 141M genetics to your cowherd! The Axis x Mika cross is a balanced combination of calving ease, growth, and maternal. Mika is the epitome of the near perfect Simmental cow and has been the poster girl for the maternal capabilities of Hook's Shear Force. Her progeny are consistently sale toppers and make a positive impact within the breed. These embryos have the potential to be your next donor or herdsire!

4 DCR Ms Red Force S44 x Come As U R Red Rocket

Consignor: Doll Ranch - New Salem, ND
PB SM • Red • Homo Polled • Embryos

COME AS U R RED ROCKET { MRL 130Y
MISS XCITING 14X

DCR MS RED FORCE S44 { HOOKS SHEAR FORCE 38K
DCR MS RIBEYE P81

CE	BW	WW	YW	MCE	Milk	MWW	CW	YG	MARB	STAY	API	TI
9.5	2.95	70.2	103.75	13.2	27.65	62.65	35.65	-0.34	0.06	24.9	127.9	68.8

• **Selling 6 embryos - guaranteeing 3 pregnancies.**
• S44 is the grandmother to DCR MR Moonshine X102 that sold to TNT Simmental of Almont, ND. One of the top cows in the herd, as she has a 152 API and a 71 for TI. 1 to 10 she has a ten for an udder. The sire of this mating Come as U R Red is a dark cherry red bull that sold for \$87,500 in the 2013 Friday Night Lights Sale. He was named Grand Champion Bull in Both the Canadian Western Agribition and Brandon AG-EX Shows in 2013. Some different genetics for your operation!



Come As U R Red Rocket - Reference Sire



3D Red Power 150Z - Reference Sire

5A Miss Trax U850 x 3D Red Power 150Z

Consignor: Traxinger Simmentals - Houghton, SD
PB SM • Red • Embryos

3D RED POWER 150Z { LFEBISS BLACKADVANCE426U
CROSSROAD RAMONA 375R

MISS TRAX U850 { LCHMN BRIGHT LIGHT L122L
R549

CE	BW	WW	YW	MCE	Milk	MWW	CW	YG	MARB	STAY	API	TI
7.4	4.25	72.2	108.2	9	26.4	62.45	40.15	-0.23	-0.02	19.05	107.2	65.5

• **Selling choice of 5 embryos - guaranteeing 2 pregnancies, if work is done by a certified embryologist.**
• Selling choice of 5 embryos out of Trax's Rushmore's Dam. Take your pick - 3D Red Power x Trax's U850 OR THSF Freedom x Trax's U850 (full sibs to Rushmore).



Trax's Rushmore - U850 son

5B Miss Trax U850 x THSF Freedom 300N

Consignor: Traxinger Simmentals - Houghton, SD
PB SM • Red • Embryos

THSF FREEDOM 300N { BH TRACKER 998J
SAFN MISS ZING 02H

MISS TRAX U850 { LCHMN BRIGHT LIGHT L122L
R549

CE	BW	WW	YW	MCE	Milk	MWW	CW	YG	MARB	STAY	API	TI
9	1.5	68.05	106.45	13.9	24.55	58.55	35.45	-0.36	-0.07	21.9	117.2	66.1

• **Selling choice of 5 embryos - guaranteeing 2 pregnancies.**

Purebred Bred Females

6 ZF Cool Lady 326A



Consignor: Zimmer Family - Clarissa, MN

BD: 1/4/13 • ASA#: 2736552 • Tattoo: 326A • Bred
PB SM • Hetero Black • Polled • Adj. BW: 96

NEW TREND WAY COOL 6W

WHEATLAND BULL 680S
KEYSTONE RADIANCE 13R

ZF DELIGHT 8390

TRIPLE C ULTIMATE FORCE
ZIMMER FAMILY 109L DARCI

PLANNED MATING EPDS	
CE	13
BW	0.9
WW	62
YW	88
MCE	10
Milk	29
MWW	60
API	149
TI	74

CE	BW	WW	YW	MCE	Milk	MWW	CW	YG	MARB	STAY	API	TI
3	5.5	69	103	6	24	58	38.9	-0.37	0.08	22.1	111	64

• AI bred to Hooks Shear Force 38K (2081939) on 5/11/14. Vet checked safe to AI date.

• No pasture exposure.

• This black female is long spined, has tremendous dimension and depth. Bred to the calving ease sire Hooks Shear Force. Don't pass her up on sale day. Her genetics go back to the TC Ultimate Force Bull.



Lot 6

7 THSR Ms Top Grade A324



Consignor: Triple H Simmentals - Hannaford, ND

BD: 1/13/13 • ASA#: 2771079 • Tattoo: A324 • Bred
PB SM • Homo Black • Homo Polled • Adj. BW: 84 • Adj. WW: 663

MCM TOP GRADE 018X

MR NLC UPGRADE U8676
MCM 513R

THSR MISS U851

ES DAKOTA NK68
PSR DAYDREAMER 124N

PLANNED MATING EPDS	
CE	14
BW	-1.1
WW	72
YW	116
MCE	12
Milk	26
MWW	62
API	148
TI	82

CE	BW	WW	YW	MCE	Milk	MWW	CW	YG	MARB	STAY	API	TI
7	2.6	71	113	11	30	65	41.5	-0.26	0.32		119	73

• AI bred to SAV Final Answer 0035 (2320695) on 4/6/14. Ultrasound safe to AI date. Bull Calf.

• No pasture exposure.

• Homo Polled and Homo Black. This female catches everyone's eye. She is extremely deep made with a big sweeping rib cage - you will appreciate the power and capacity this female has. This is the type of cattle we like to breed, easy keeping and good doing that will make excellent cows. A324's grandmother is still producing in our herd and has 6 daughters we have kept. This female has a very bright future ahead of her. Be sure to find this one sale day.



Lot 7

8 STAU Ms Rushmore 304A



Consignor: M/S Stavick Simmental - Veblen, SD

BD: 1/18/13 • ASA#: 2725188 • Tattoo: 304A • Bred
PB SM • Red • Polled • Adj. BW: 87 • Adj. WW: 654

TRAXS RUSHMORE X103

THSF FREEDOM 300N
MISS TRAX U850

STAV MS NOPHALT 104Y

PPSR NOPHALT 20H
STAV MS SPARKY 557R

PLANNED MATING EPDS	
CE	12
BW	1.4
WW	71
YW	104
MCE	13
Milk	27
MWW	62
API	136
TI	77

CE	BW	WW	YW	MCE	Milk	MWW	CW	YG	MARB	STAY	API	TI
8	2.5	67	103	13	22	56	35.1	-0.30	-0.02	20.5	113	65

• AI bred to WS Beef Maker R13 (2289889) on 4/21/14. Confirmed to AI date.

• No pasture exposure.

• 304A is a solid red Rushmore out of a Nophalt cow. This heifer carries a tremendous hip and top, and standing on a huge foot this female will create the red bulls our industry is looking for. 304A has a very balanced set of EPDS that have endless breeding options. She is bred and confirmed to Beef Maker.



Lot 8

9 Ellingson Ms 680S A342



Consignor: Ellingson Simmentals - Dahlen, ND

BD: 2/5/13 • ASA#: 2791341 • Tattoo: A342 • Bred PB SM • Black • Polled • Adj. BW: 95 • Adj. WW: 692

WHEATLAND BULL 680S

WHEATLAND BULL 131L
WHEATLAND LADY 351N

ELLINGSON PERFECTOR W942

ELLINGSON BLACKPERFECTOR
ELLINGSON TRAVELER S669

PLANNED MATING EPDS	
CE	11
BW	2.4
WW	70
YW	115
MCE	9
Milk	22
MWW	56
API	125
TI	72

CE	BW	WW	YW	MCE	Milk	MWW	CW	YG	MARB	STAY	API	TI
4	5.3	80	139	4	19	59	60.5	-0.19	0.05	15.5	105	71

- AI bred to Ellingson Legacy M229 (Olie) (2171761) on 4/8/14. Safe to AI date.
- Pasture exposed to Ellingson Sovereign A381 (2791400) from 6/7/14 to 8/1/14.

• Take a good look at this fancy black heifer. She should stay home, but Jeff twisted my arm! She is the type of heifer that is a game changer, donor quality with tremendous depth of rib and style. Her sire has sired sale toppers across the U.S. and Canada, her Olie sired calf will add to the value of this heifer. Homo polled and color tests available by sale day, check website.



Lot 10

11 STAU Ms Club King 324A



Consignor: M/S Stavick Simmental - Veblen, SD

BD: 2/10/13 • ASA#: 2725266 • Tattoo: 324A • Bred PB SM • Black • Polled • Adj. BW: 97 • Adj. WW: 737

RC CLUB KING 040R

HC HUMMER 12M
RC MISS GRIFFEY 038N

STAV SNUZZLE VI 563R

BR MR MADE BLACK 2011M
STAV MS ZINGER 118L

PLANNED MATING EPDS	
CE	11
BW	2.3
WW	82
YW	120
MCE	13
Milk	27
MWW	68
API	134
TI	80

CE	BW	WW	YW	MCE	Milk	MWW	CW	YG	MARB	STAY	API	TI
6	5.3	81	126	10	27	67	52.2	-0.15	0.08	15.9	107	72

- AI bred to WS All Around Z35 (2675740) on 4/21/14. Confirmed to AI date.
- No pasture exposure.

• 324A is a black blaze face, Club King out of our 563R dam. 563R has a WW ratio of 114 on 8 calves and 111 for YW ratio! This cow is responsible for several top-selling bulls in our annual sale. 324A has incredible EPD's being in the top 2-3% for WW, YW and MWW. If you're looking for a blaze faced female with maximum performance and power, here she is and she is confirmed pregnant to All Around on 4.21.14, no exposure!



Lot 12



Lot 9

10 WCS Ms Power 34A

Consignor: Western Cattle Source - Crawford, NE

BD: 2/6/13 • ASA#: 2745572 • Tattoo: 34A • Twin • Bred PB SM • Hetero Black • Polled • Adj. BW: 68 • Adj. WW: 582

ES POWER UP XS37

MR NLC UPGRADE U8676
ESS37

WCS MS GOLD 9017W

WCS MR GOLD 700T
WCS MS SWEET 530R

PLANNED MATING EPDS	
CE	12
BW	-0.2
WW	60
YW	94
MCE	10
Milk	26
MWW	56
API	128
TI	70

CE	BW	WW	YW	MCE	Milk	MWW	CW	YG	MARB	STAY	API	TI
6	3.7	65	85	10	22	55	25.4	-0.29	0.22		106	64

- AI bred to Connealy Thunder (2437235) on 4/18/14. Safe to AI date.
- Pasture exposed to WCS Chevy 327A (2745412) from 5/11/14 to 6/28/14.
- Wow! These Power Up females are just flat good. You cannot find PB's with this much style, look and broodiness as his. 34A is feminine in her design with excellent depth and shape of rib. She is wide down her top and has a great hip and hind leg on her. She is super-correct in her structural makeup. Her mom and grandmother are some of our top cows. Females like her are hard to let go.



Lot 11

12 NPS Miss A376



Consignor: North Northern Plains Simmental - Bowbells, ND

BD: 2/14/13 • ASA#: 2835619 • Tattoo: A376 • Twin • Bred PB SM • Red • Polled • Adj. BW: 73 • Adj. WW: 468

RFS RED IRON T20

35R
RF RAUL

NPS MISS SUPER X

WINCHESTER HR P8315
NPS P462

PLANNED MATING EPDS	
CE	15
BW	-1.7
WW	63
YW	89
MCE	15
Milk	29
MWW	60
API	141
TI	73

CE	BW	WW	YW	MCE	Milk	MWW	CW	YG	MARB	STAY	API	TI
10	2.0	66	87	13	23	56	23.7	-0.48	0.11	22.1	125	68

- AI bred to WS High Stakes W115 (2499571) on 5/6/14. Safe to AI date.
- Pasture exposed to BTS Good As Gold 809U (2447345) from 5/20/14 to 7/10/14.
- Moderate, thick made, solid red heifer. She has a very maternal pedigree with Red Iron and Winchester. A full sister sold in the 2012 ND Classic sale. She is safe in calf to WS High Stakes.

13 NPS Miss A319

Consignor: Aufforth Northern Plains Simmental - Bowbells, ND

BD: 2/15/13 • ASA#: 2835605 • Tattoo: A319 • Bred
PB SM • Black • Polled • Adj. BW: 73 • Adj. WW: 459

HTP SVF IN DEW TIME

CNS DREAM ON L186
HTP SVF HONEYDEW

NLC S119 SELENE

NLC MALTA L132M
NLC K7456 KENWYN

CE	19
BW	-0.4
WW	58
YW	78
MCE	15
Milk	18
MWW	47
API	133
TI	68

CE	BW	WW	YW	MCE	Milk	MWW	CW	YG	MARB	STAY	API	TI
15	-0.3	64	88	14	11	43	21.1	-0.26	0.29	14.4	129	73

- AI bred to Winchester HR P8315 (2252969) on 5/6/14. Safe to AI date.
- Pasture exposed to BTS Good As Gold 809U (2447345) from 5/20/14 to 7/10/14.
- Long bodied, flashy female with a pedigree full of longevity and maternal traits. Safe in calf to Winchester.



Lot 14

15 Traxs Miss A395

Consignor: Traxinger Farm - Houghton, SD

BD: 2/19/13 • ASA#: 2795901 • Tattoo: A395 • Bred
PB SM • Red • Polled • Adj. BW: 87 • Adj. WW: 687

WS ALL IN W111

HSF HIGH ROLLER 12T
WS MISS TRACY T50

TRAXS MISS FREEDOM Y114

THSF FREEDOM 300N
MISS TRAXS W994

CE	12
BW	0.2
WW	75
YW	111
MCE	16
Milk	26
MWW	64
API	127
TI	71

CE	BW	WW	YW	MCE	Milk	MWW	CW	YG	MARB	STAY	API	TI
14	0.4	80	114	17	29	69	37.1	-0.31	-0.08	24.4	133	75

- AI bred to Traxs Rushmore X103 (2574812) on 5/9/14. Ultrasound safe to AI date.
- Pasture exposed to LRX Radium 28Y (2640168) from 5/22/14 to 5/29/14.
- This red female has the qualities that we strive to produce in all our replacements. A balanced package with the thickness and eye appeal to catch your attention. She will have a Trax's Rushmore calf that we think will be special.

16 Miss GD A155

Consignor: G & D Simmental - Calvin, ND

BD: 2/20/13 • ASA#: 2801673 • Tattoo: A155 • Bred
PB SM • Red • Polled • Adj. BW: 92 • Adj. WW: 606

TRAXS RUSHMORE X103

THSF FREEDOM 300N
MISS TRAX U850

MISS GD X154

LRS BIG COUNTRY TIME 82U
JSF MY GIRL

CE	13
BW	1.1
WW	78
YW	112
MCE	15
Milk	27
MWW	66
API	133
TI	76

CE	BW	WW	YW	MCE	Milk	MWW	CW	YG	MARB	STAY	API	TI
9	1.9	70	106	13	17	52	35.4	-0.33	0.00	19.5	115	68

- AI bred to WS All In W111 (2499595) on 5/11/14. Ultrasound safe to AI date.
- Pasture exposed to Mr Amigo 250Z (2655396) from 5/23/14 to 7/28/14.
- A solid red, Rushmore daughter out of a very broody Big Country 82U Dam that has tremendous performance to go with her very balanced set of numbers. The mating to All In offers a coupon for a fast return on your investment.



Lot 13

14 CCE Ms Red Cloud 305A

Consignor: Clay Ekstrum - Kimball, SD

BD: 2/18/13 • ASA#: 2784925 • Tattoo: 064A • Bred
PB SM • Red • Polled • Adj. BW: 91 • Adj. WW: 659

LFE BLACK LAKOTA 385W

R PLUS BLACKEDGE
KJLI RAZZLE DAZZLE 628R

CCE MS BLACK POWDER 064X

TNT TOP GUN R244
CCE EKR MS DICE 655S

CE	14
BW	0.9
WW	59
YW	89
MCE	12
Milk	23
MWW	52
API	97
TI	58

CE	BW	WW	YW	MCE	Milk	MWW	CW	YG	MARB	STAY	API	TI
10	2.1	65	104	7	19	51	35.4	-0.11	-0.03	14.4	103	63

- AI bred to CCE EKR Copy Right 028Z (2659032) on 4/16/14. Safe to AI date.
- Pasture exposed to VA In Style 2042 (17741850) from 5/1/14 to 5/30/14.
- Solid red, non-diluter out of two black parents. A red performance heifer with a different pedigree, bred to an outcross hetero black, homo polled, calving ease bull. Looking for some different bloodlines, don't pass her up on sale day. Homo polled test will be available sale day.



Lot 15

17 Miss GD A3

Consignor: G & D Simmental - Calvin, ND

BD: 2/23/13 • ASA#: 2801706 • Tattoo: A3 • Bred
PB SM • Black • Polled • Adj. BW: 95 • Adj. WW: 644

MJ DIAMOND CUTTER Y33

THSF FREEDOM 300N
REN HEART BREAKER M247

MISS TB S3A

SRS J914 PREFERRED BEEF
MISS TB 3L

CE	13
BW	0.5
WW	69
YW	100
MCE	15
Milk	27
MWW	62
API	133
TI	72

CE	BW	WW	YW	MCE	Milk	MWW	CW	YG	MARB	STAY	API	TI
6	3.3	69	103	12	18	53	36.2	-0.26	0.01	18.4	106	65

- AI bred to HSF High Roller 12T (2408113) on 5/10/14.
- Pasture exposed to Mr Amigo 250Z (2655396) from 5/23/14 to 7/28/14.
- A3 is a black purebred daughter of MJ Diamond Cutter Y33; a top-selling bull we selected from the M&J Ranch program. Her dam S3A has done an excellent job for us! She is a high volume female with a lot of performance. Will make a very good brood cow for any serious program.

18 WCS Ms Upgrade 367A

Consignor: Western Cattle Source - Crawford, NE

BD: 2/23/13 • ASA#: 2745419 • Tattoo: 367A • Bred
PB SM • Black • Polled • Adj. BW: 85 • Adj. WW: 749

MR NLC UPGRADE U8676

ELLINGSON LEGACY M229
MS NLC MOJO S6119 B

WCS788T

WCS MR LIMIT 208M
WCS MS FLUFFY 563R

PLANNED MATING EPDS	
CE	14
BW	-0.4
WW	68
YW	109
MCE	10
Milk	31
MWW	65
API	138
TI	77

CE	BW	WW	YW	MCE	Milk	MWW	CW	YG	MARB	STAY	API	TI
9	3.2	81	114	9	32	73	41.6	-0.38	0.29	13.8	121	81

- AI bred to Connealy Thunder (2437235) on 4/30/14. Safe to AI date.
- Pasture exposed to WCS Chevy 327A (2745412) from 5/11/14 to 6/28/14.
- This Upgrade female is a big ribbed, stout made female. She is clean made in her front, smooth shouldered with lots of depth and shape of rib. 367A is square and wide in her hip. Very structurally sound. Her mom always has a bull in the bull pen or her daughters are retained. You cannot go wrong with females made like her.



Lot 19



Lot 18

19 WCS Ms Hot 377A

Consignor: Western Cattle Source - Crawford, NE

BD: 2/25/13 • ASA#: 2745565 • Tattoo: 377A • Bred
PB SM • Hetero Black • Polled • Adj. BW: 82 • Adj. WW: 642

WCS MR HOT ROD 210M

BS MR CORRECTOR 9111J
WCS MS DASH 4 CASH 017K

WCS MS KISS ME 538R

BS MR CORRECTOR 9111J
BS MISS 600U P73H

PLANNED MATING EPDS	
CE	16
BW	0.3
WW	77
YW	120
MCE	9
Milk	25
MWW	64
API	145
TI	80

CE	BW	WW	YW	MCE	Milk	MWW	CW	YG	MARB	STAY	API	TI
11	3.8	71	96	9	16	52	31.6	-0.28	0.00	17.4	108	65

- AI bred to Connealy Right Answer 746 (2517642) on 4/19/14. Safe to AI date.
- Pasture exposed to WCS Chevy 327A (2745412) from 5/11/14 to 6/28/14.
- Here is a PB bred heifer with the look. Very fancy and clean fronted female that is very sound with excellent depth of rib and overall mass. She is one of our best PB's. One cannot go wrong with a heifer like her. Her mom is a top producer for us. One cannot go wrong with females like her.

20 CCE EKR Ms Northern 329A

Consignor: Clay Ekstrum - Kimball, SD

BD: 3/1/13 • ASA#: 2784844 • Tattoo: 723A • Bred
PB SM • Red • Polled • Adj. BW: 93 • Adj. WW: 583

KOP TRUE NORTH 103Y

CMS TRADEMARK 756T
KOP MS BENGIE 96RO

CCE EKR MS TOM KAT 723T

TNT TOP GUN R244
CCE EKR MS HERC 436P

PLANNED MATING EPDS	
CE	14
BW	0.9
WW	60
YW	88
MCE	13
Milk	28
MWW	58
API	104
TI	60

CE	BW	WW	YW	MCE	Milk	MWW	CW	YG	MARB	STAY	API	TI
8	3.7	65	95	8	25	57	31.5	-0.20	-0.09	17.3	97	60

- AI bred to KS Bravado P68 (2254555) on 4/23/14. Safe to AI date.
- Pasture exposed to VA In Style 2042 (17741850) from 5/1/14 to 5/30/14.
- Solid red heifer that has beef cow written all over her. Be one of the first to calve out a KOP True North daughter and add some different red genetics into your herd. Homo polled test and dilution test will be available sale day.



Lot 21



Lot 20

21 Ellingson Bladvance A3033

Consignor: Ellingson Simmentals - Dahlen, ND

BD: 3/1/13 • ASA#: 2811894 • Tattoo: A3033 • ET • Bred
PB SM • Red • Polled • Adj. BW: 95 • Adj. WW: 658

LFEISS BLACKADVANCE426U

REMINGTON ON TARGET 2S
LFE BILLY 80M

BRANT R17K MS TOP SHELF

SAC MR MT 73G
SAC MISS JET TOP 29G

PLANNED MATING EPDS	
CE	11
BW	1.8
WW	64
YW	98
MCE	8
Milk	25
MWW	57
API	121
TI	68

CE	BW	WW	YW	MCE	Milk	MWW	CW	YG	MARB	STAY	API	TI
5	4.1	69	103	4	26	60	37.1	-0.29	-0.05	16.9	97	63

- AI bred to Ellingson Legacy M229 (Olie) (2171761) on 4/10/14. Safe to AI date.
- Pasture exposed to Ellingson Sovereign A381 (2791400) from 6/7/14 to 8/1/14.
- A beautiful, black daughter of Black Advance. Advance has left his mark across the U.S. and Canada. The females are attractive, very productive females with beautiful udders. His sons are the highest performing, heaviest muscled bulls in many programs. Look for her to be a top donor cow and leave her own legacy. Homo polled and color tests available by sale day, check website.



Lot 22

23 HSR Ms Rushmore A113



Consignor: Hansen Simmental Ranch - Ryder, ND
 BD: 3/2/13 • ASA#: 2775548 • Tattoo: A113 • Bred
 PB SM • Red • Polled • Adj. BW: 63 • Adj. WW: 659

TRAXS RUSHMORE X103

{ THSF FREEDOM 300N
 MISS TRAX U850

HSR MS BEEF MAKER Y248

{ WS BEEF MAKER R13
 HSR MISS SUNRISE S457

CE	12
BW	-0.6
WW	69
YW	104
MCE	12
Milk	25
MWW	60
API	139
TI	75

CE	BW	WW	YW	MCE	Milk	MWW	CW	YG	MARB	STAY	API	TI
14	-1.9	66	100	13	29	62	26.2	-0.42	0.08	19.9	134	74

- **AI bred to GW Redestined 932A (2708104) on 6/1/14. Ultrasound safe to AI date. Due 3/13/14.**
- **Pasture exposed to GW Redestined 932A (2708104) from 6/10/14 to 8/15/14.**
- A dark red heifer from the heart of our breeding program. She combines all of the phenotypic traits that make cows for our herd. The udder quality of the Rushmore females, combined with Beef Maker are two pedigrees that make those sought after cows that have longevity. Consider adding this profit-making heifer to your breeding program.



Lot 24

25 MLC Ms Ranch Hand A608



Consignor: Mandan Lake Creek Simmental Ranch - Center, ND
 BD: 3/3/13 • ASA#: 2804311 • Tattoo: A608 • Bred
 PB SM • Black • Polled • Adj. BW: 78 • Adj. WW: 701

SAND RANCH HAND

{ WHEATLAND BULL 131L
 SAND LUCKY CHARMER

MLC MS TANKER Y514

{ TNT TANKER U263
 DSR BLACK BELARA N108

CE	10
BW	1.9
WW	70
YW	113
MCE	13
Milk	15
MWW	50
API	131
TI	72

CE	BW	WW	YW	MCE	Milk	MWW	CW	YG	MARB	STAY	API	TI
10	0.4	69	105	17	26	61	32.8	-0.39	0.14	21.3	131	74

- **AI bred to RCR Augustus R54 (2310969) on 6/22/14. Safe to AI date. Bull calf.**
- **Pasture exposed to Kinns Easy Iron 110A (2775260) from 6/24/14 to 7/24/14.**
- This is a perfect cow profile here. First of all she is a deep, easy fleshing individual with a maternal cow family behind her. Then combine the EPD profile with her AI pedigree and bred to a breed-leading sire. Cow family stacked with beautiful udder traits. Her bull calf will be loaded with lots of options.

22 GFF A05 Aunt Pearl



Consignor: Gregg Family Simmental - Eureka, SD

BD: 3/1/13 • ASA#: 2901917 • Tattoo: A05 • Bred
 PB SM • Black • Polled • Adj. BW: 105

LAZY H PATHFINDER R104

{ CNS DREAM ON L186
 DRAKE MISS P36D

GF/HS/HSF MINNIE PEARL

{ SAS T101 SWEET MEAT
 AJE-RCC LIZZYS PEARL P4

CE	13
BW	-1.0
WW	58
YW	96
MCE	10
Milk	27
MWW	56
API	132
TI	68

CE	BW	WW	YW	MCE	Milk	MWW	CW	YG	MARB	STAY	API	TI
7	1.4	54	75	9	23	50	16.7	-0.24	0.05	24.1	117	59

- **AI bred to PVF Insight 0129 (2835949) on 4/28/14. Safe to AI date.**
- **No pasture exposure.**
- Here's a really nice-fronted, big-boned, blaze face, bred heifer. Due with a halfblood calf out of the exciting young Angus sire, Insight.



Lot 23

24 KS Annabelle A975



Consignor: Kenner Simmental Ranch - Leeds, ND

BD: 3/3/13 • ASA#: 2758317 • Tattoo: A975 • Bred
 PB SM • Red • Polled • Adj. BW: 93 • Adj. WW: 769

LFE BS LEWIS 322U

{ R PLUS BLACKEDGE
 LFE BS MS ARNOLD 135S

KS MISS YENNEDY Y796

{ HSF HIGH ROLLER 12T
 TT MS MAJORITY 75W

CE	15
BW	-0.7
WW	74
YW	111
MCE	6
Milk	22
MWW	59
API	136
TI	77

CE	BW	WW	YW	MCE	Milk	MWW	CW	YG	MARB	STAY	API	TI
10	5.0	90	129	5	20	65	52.8	-0.11	0.00	19.0	115	75

- **AI bred to HXC Conquest 4405P (2376637) on 5/15/14. Safe to AI date. Heifer calf.**
- **Pasture exposed to BCLR ShamWow W611 (2508379) from 5/23/14 to 7/19/14.**
- KS Annabelle is a powerful female and a total sweetheart. Her grandmother was purchased in the 2010 ND Simmental Classic from Double T Simmentals and was carrying Annabelle's mother. One of the most beautiful uddered females we have. Stubby adds power to her pedigree and the cross certainly worked. We love our Conquest calves and this mating should make a great female addition for the buyer!



Lot 25

26 NSR Ms Hoosier A6

Consignor: **Nesemeier Cattle Ranch - Leonard, ND**

BD: 3/9/13 • ASA#: 2867002 • Tattoo: A6 • Bred
PB SM • Red • Polled • Adj. BW: 96 • Adj. WW: 735

LCHMN BRIGHT LIGHT L122L { GW BRIGHT LIGHT 019H
LCHM BALDY H7013

DKSR MS EXCEL Y392 { IPU 105L EXCEL 132W
KR MISS NETTIE U54

PLANNED MATING EPDS	
CE	12
BW	1.5
WW	78
YW	113
MCE	12
Milk	27
MWW	67
API	141
TI	79

CE	BW	WW	YW	MCE	Milk	MWW	CW	YG	MARB	STAY	API	TI
9	3.7	74	112	9	27	64	41.5	-0.22	0.10	21.5	123	71

- **AI bred to WS All Around Z35 (2675740) on 6/5/14. Ultrasound safe to AI date. Due 3/17/15.**
- **Pasture exposed to HSR Rushmore A201 (2775725) from 6/11/14 to 9/27/14.**
- Here is a red, bred heifer out of two black parents. Her dam is a maternal sister to the lead off and top-selling bull of the 2014 Dakota Xpress sale; her sire is the maternal giant, Hoosier. She is dark cherry red, thick, and deep bodied with a lot of volume and a good attitude. AI bred to WS All-Around Z35, a hetero black bull from Schlenker's. We're excited to see what you get, red or black? This is our first entry to the ND Classic, and we're proud to offer her.



Lot 27



Lot 28

29 Miss A/H 122A

Consignor: **A/H Cattle Company - Claremont, SD**

BD: 3/12/13 • ASA#: 2760419 • Tattoo: 122A • Bred
PB SM • Red • Polled • Adj. BW: 77 • Adj. WW: 642

TRAXS RUSHMORE X103 { THSF FREEDOM 300N
MISS TRAX U850

MISS A/H 122S { TOSU ORLANDO F004
MISS LH3S 75J

PLANNED MATING EPDS	
CE	17
BW	-1.4
WW	61
YW	88
MCE	13
Milk	29
MWW	59
API	152
TI	76

CE	BW	WW	YW	MCE	Milk	MWW	CW	YG	MARB	STAY	API	TI
10	0.9	67	103	12	23	56	32.4	-0.26	0.08	17.0	117	69

- **AI bred to Hooks Shear Force 38K (2081939) on 5/17/14. Safe to AI date.**
- **No pasture exposure.**
- 122A is a dark cherry red, Rushmore daughter that comes from one of the best cow families we have. They are the big volumed, easy keeping kind. Her dam's calves always make the front of the replacement pen or the top of our bull offering. Shear Force should compliment this heifer well. Buy with confidence, the guesswork is done. Please visit www.hansen-ranch.com after 11/15/14 to view video of this heifer.



Lot 26

27 BRKC Addison A41

Consignor: **Rocky Knoll Cattle - Highmore, SD**

BD: 3/10/13 • ASA#: 2891587 • Tattoo: A41 • Bred
PB SM • Black • Polled • Adj. BW: 87 • Adj. WW: 671

HSF BETTER THAN EVER { SVF/NJC MO BETTER M217
HSF VICTORIA P30

HSF/HS SCARLETT Y165 { STF DOMINANCE T171
HSF/HS SHEZA BEAUTY U823

PLANNED MATING EPDS	
CE	15
BW	-1.0
WW	61
YW	92
MCE	10
Milk	23
MWW	54
API	140
TI	71

CE	BW	WW	YW	MCE	Milk	MWW	CW	YG	MARB	STAY	API	TI
11	1.1	56	74	7	19	47	15.0	-0.33	-0.02	26.1	123	59

- **AI bred to SAV Bismarck 5682 (2492333) on 5/13/14. Safe to AI date.**
- **Pasture exposed to BRKC Steal Top 490A (2817751) from 5/18/14 to 6/30/14.**
- Addison is a brood cow with power. She has tremendous rib capacity, muscle dimension and sets down a powerful foot. She will produce calves that will have performance and eye appeal. She is ultrasounded safe to AI sire SAV Bismarck to calve 5/13/15.

28 Miss A/H 119A

Consignor: **A/H Cattle Company - Claremont, SD**

BD: 3/11/13 • ASA#: 2890731 • Tattoo: 119A • Bred
PB SM • Red • Polled • Adj. BW: 78 • Adj. WW: 659

KS GEMINI U68 { DRS J91 OUTBACK 604S
RIV RED BRIGADIA 969J

MISS A/H 72X { WS BEEF MAKER R13
MISS A/H 72S

PLANNED MATING EPDS	
CE	13
BW	0.5
WW	66
YW	99
MCE	10
Milk	32
MWW	65
API	131
TI	74

CE	BW	WW	YW	MCE	Milk	MWW	CW	YG	MARB	STAY	API	TI
8	1.0	72	102	12	28	63	31.2	-0.20	0.22	14.4	117	75

- **AI bred to Lchmn Bright Light L122L (2118083) on 6/7/14. Safe to AI date.**
- **No pasture exposure.**
- 119A is a dark red, Gemini daughter that is very clean made and feminine fronted that still has the depth, volume and fleshing ability to go with it. She is moderate in her frame and functional and sound in her movement. She comes from a cow family known for their females. The females sired by Gemini are easy to like. The mating to Hoosier should compliment her. Please visit www.hansen-ranch.com after 11/15/14 to view video of this heifer.



Lot 29



Lot 30

31 Schmidt Upgrade A309



Consignor: Schmidt Simmentals - Center, ND
 BD: 3/12/13 • ASA#: 2816128 • Tattoo: A309 • Bred
 PB SM • Black • Polled • Adj. BW: 96 • Adj. WW: 749

MR NLC UPGRADE U8676

ELLINGSON LEGACY M229
 MS NLC MOJO S6119 B

AIRWAY MSLUCKYJOKER N304

GW LUCKY DICE 187H
 AIRWAY MISS JOKER L105

CE	5
BW	4.1
WW	77
YW	118
MCE	6
Milk	25
MWW	64
API	148
TI	81

CE	BW	WW	YW	MCE	Milk	MWW	CW	YG	MARB	STAY	API	TI
6	4.3	81	122	9	26	66	48.0	-0.39	0.21	21.4	128	77

- AI bred to Dikemans Double Down 26W (2494041) on 5/20/14.
- Pasture exposed to Schmidt Birthstone A02 (AAA# 17809458) from 6/8/14 to 7/8/14.
- Ultrasound safe to AI date. Due 2/26/15.
- Look here. This bred has everything you could want. She is feminine with lots of rib and a great design. Her dam is 11-years-old and still my favorite cow. She has never missed and always has a great calf. This Upgrade heifer may be her best.



Lot 32

33 HSR Ms Detinator A222



Consignor: Hansen Simmental Ranch - Ryder, ND
 BD: 3/18/13 • ASA#: 2775607 • Tattoo: A222 • Bred
 PB SM • Black • Polled • Adj. BW: 92 • Adj. WW: 719

R PLUS DETINATOR 339X

FOXY ROCKSTAR
 C-K RAVISH 19R

HSR MISS DAKOTA U620

ES DAKOTA NK68
 506R

CE	10
BW	1.4
WW	72
YW	109
MCE	10
Milk	28
MWW	63
API	117
TI	68

CE	BW	WW	YW	MCE	Milk	MWW	CW	YG	MARB	STAY	API	TI
6	5.3	78	119	6	24	62	48.5	-0.30	-0.10	21.4	107	66

- AI bred to CCR Wide Range 9005 (2725666) on 5/31/14. Ultrasound safe to AI date. Due 3/14/14.
- Pasture exposed to MLC Mr SRU79 Y725 (2604420) from 6/10/14 to 8/15/14.
- A222 is one of those breeding pieces that has the potential to impact the Simmental industry for years to come. She will be one of the first heifers to sell bred to the exciting young sire, Wide Range. Who created a lot of interest when he sold at Cow Camp annual production sale. The resulting calf will have all the pieces that can make a mark in your breeding program.

30 Miss A/H A85A



Consignor: A/H Cattle Company - Claremont, SD
 BD: 3/12/13 • ASA#: 2890739 • Tattoo: A85A • Bred
 PB SM • Black • Polled • Adj. BW: 70 • Adj. WW: 658

WS BEEF MAKER R13

HOOKS SHEAR FORCE 38K
 DCR MS RIBEYE N72

MISS LH3S 122N

TOSU ORLANDO F004
 MISS LH3S 75J

CE	16
BW	0.6
WW	64
YW	99
MCE	9
Milk	32
MWW	64
API	139
TI	76

CE	BW	WW	YW	MCE	Milk	MWW	CW	YG	MARB	STAY	API	TI
13	1.3	69	101	11	27	61	31.6	-0.25	0.43	14.0	132	79

- AI bred to Lchmn Bright Light L122L (2110803) on 5/17/14. Safe to AI date.
- No pasture exposure.
- A85A is a solid black, soft made, easy moving Beef Maker daughter. She is very deep sided, easy fleshing and extremely sound in her movement. This heifer is hard to fault, no matter which angle you look at her. She comes from a rock solid cow family. Her mating to Hoosier should be one to watch. Please visit www.hansen-ranch.com after 11/15/14 to view video of this heifer.



Mr NLC Upgrade U8676 - Reference Sire

32 NPS Miss A372



Consignor: Aufforth Northern Plains Simmental - Bowbells, ND
 BD: 3/15/13 • ASA#: 2835416 • Tattoo: A372 • Bred
 PB SM • Hetero Black • Polled • Adj. BW: 90 • Adj. WW: 507

SRF MATER 163Y

TRAX CARTWRIGHT U97
 KR NETTIE T51

NPS MISS T729

TNT EARNHARDT L30
 NLC R29 RARIETTA

CE	10
BW	1.3
WW	57
YW	86
MCE	7
Milk	23
MWW	51
API	116
TI	65

CE	BW	WW	YW	MCE	Milk	MWW	CW	YG	MARB	STAY	API	TI
9	3.2	70	101	9	21	56	33.8	-0.25	0.09	23.6	124	68

- AI bred to GW Comfort Zone 651Y (2805948) on 5/6/14. Safe to AI date.
- Pasture exposed to BTS Good As Gold 809U (2447345) from 5/20/14 to 7/10/14.
- Very broody, solid black heifer sired by the highlight red bull at the 2012 Edge of the West sale, SRF Mater. She is the lead calf from an exceptional sire group and unfortunately the only calf crop out of Mater, who is now deceased. She has a very balanced set of EPD's and a star-studded pedigree with Freedom, Preferred Beef, Dream On, and TNT Tizzy all in her background. She is safe in calf to the exciting young ABS bull, Comfort Zone.



Lot 33

34 KS Addison A520

Consignor: Kenner Simmental Ranch - Leeds, ND

BD: 3/19/13 • ASA#: 2758049 • Tattoo: A520 • Bred
PB SM • Homo Black • Polled • Adj. BW: 92 • Adj. WW: 627

BAS HEAVY DUTY

TNT DUAL FOCUS T249
TNT MISS R144

THSR ROSEANNA R522

SRS J914 PREFERRED BEEF
NPS MS GOOD FORTUNE H60

PLANNED MATING EPDS	
CE	17
BW	-0.3
WW	64
YW	107
MCE	11
Milk	30
MWW	62
API	155
TI	79

CE	BW	WW	YW	MCE	Milk	MWW	CW	YG	MARB	STAY	API	TI
9	4.2	67	108	8	27	60	40.5	-0.06	0.31		115	68

• **AI bred to Ellingson Identity 9104 (2755115) on 5/14/14. Safe to AI date.**

Bull calf.

• **Pasture exposed to Ellingson Durango 2156 (2722169) from 5/24/14 to 7/19/14.**

• KS Addison's dam was purchased at the 2006 ND Simmental Classic Sale from Triple H Simmentals. She has produced several females that have stayed in our herd and a bull that sold for \$10,000 in our 2013 Sale. The bull calf from this heifer and Ellingson Identity will be exciting! We calved our first set of Identity's this year and are very happy with the calving ease and performance.



Lot 35

36 Traxs Miss A370

Consignor: Traxinger Farm - Houghton, SD

BD: 3/24/13 • ASA#: 2795876 • Tattoo: A370 • Bred
PB SM • Black • Polled • Adj. BW: 96 • Adj. WW: 748

THSF FREEDOM 300N

BH TRACKER 998J
SAFN MISS ZING 02H

MISS TRAXS T785

LCHMN BRIGHT LIGHT L122L
HS HOOKS PROM NIGHT P153

PLANNED MATING EPDS	
CE	14
BW	-0.7
WW	66
YW	114
MCE	13
Milk	27
MWW	60
API	138
TI	74

CE	BW	WW	YW	MCE	Milk	MWW	CW	YG	MARB	STAY	API	TI
8	2.7	76	124	14	24	62	47.6	-0.30	0.04	21.1	122	72

• **AI bred to Connealy Thunder (2437235) on 5/9/14. Ultrasound safe to AI date.**

• **Pasture exposed to LRX Radium 28Y (2640168) from 5/22/14 to 5/29/14.**

• This heifer is unique. A black Freedom that possesses size, capacity, and style. A mother cow in the making that will produce the good ones. This one belongs to my son so I can't take the credit. If you're looking for an opportunity to get started with a good one here she is.



Lot 37



Lot 34

35 RFS Miss Ginger A47

Consignor: Rydeen Farms Simmental's - Clearbrook, MN

BD: 3/21/13 • ASA#: 2803328 • Tattoo: A47 • Bred
PB SM • Red • Homo Polled • Adj. BW: 88 • Adj. WW: 795

TRAXS RUSHMORE X103

THSF FREEDOM 300N
MISS TRAX U850

BBS TEDDY X10

WHEATLAND RED TEDDY 457P
BBS MISS TOPGUN U228

PLANNED MATING EPDS	
CE	15
BW	-2.1
WW	64
YW	94
MCE	15
Milk	27
MWW	59
API	133
TI	70

CE	BW	WW	YW	MCE	Milk	MWW	CW	YG	MARB	STAY	API	TI
9	1.2	67	97	13	20	53	29.3	-0.22	-0.12	20.4	109	63

• **AI bred to WS High Stakes W115 (2499571) on 5/26/14. Safe to AI date.**

Bull calf, due 3/7/15.

• **Pasture exposed to Hart Final Answer 0048 (2752024) from 6/1/14 to 8/15/14.**

• RFS Miss Ginger is a beautiful, solid red, Rushmore female. She is non-diluted red and homo polled by pedigree. We purchased her dam from Bata Bros. and her 2012 Red Iron calf was a standout herd bull that sold in our 2013 Production Sale. RFS Miss Ginger is due on 3-7-15 with a High Stakes bull calf that will be a standout at your ranch!



Lot 36

37 DCR Ms R/Redgie A416

Consignor: Doll Ranch - New Salem, ND

BD: 3/28/13 • ASA#: 2784199 • Tattoo: A416 • Bred
PB SM • Red • Polled • Adj. BW: 88 • Adj. WW: 688

WFL MR WESTWAY 50X

R PLUS REDGE 8018U
WFL RED DORA 8036U

DCR MS G-5TTWORIBEYET187

R PLUS RED RIBEYE 1134L
DCR MISS BPDM

PLANNED MATING EPDS	
CE	11
BW	1.8
WW	76
YW	114
MCE	13
Milk	28
MWW	66
API	130
TI	78

CE	BW	WW	YW	MCE	Milk	MWW	CW	YG	MARB	STAY	API	TI
6	3.3	79	124	13	25	65	48.3	-0.15	-0.19	18.9	101	66

• **AI bred to WS Beef Maker R13 (2289889) on 5/1/14. Ultrasound safe to AI date.**

• **Pasture exposed to Prairie Wind Sabre 21W (2573916) from 6/1/14 to 8/1/14.**

• 50X daughters have great udders plus great dispositions and are easy to work with. A416 is a 3/4 sister to our other consignment A480. It is tough to part with this kind! This heifer carries a very balanced set of EPD's and is from the heart of our replacement heifers.

38 RFS Miss Maya A100

Consignor: Rydeen Farms Simmental's - Clearbrook, MN

BD: 3/30/13 • ASA#: 2803383 • Tattoo: A100 • Bred
PB SM • Black • Polled • Adj. BW: 91 • Adj. WW: 848

KBHR Y068 HARLEY

KS BLACK DIAMOND W992
OLF LADY TRIATHLON S587

U51

HTP SVF IN DEW TIME
RFS ISABELLA H86

PLANNED MATING EPDS	
CE	15
BW	-0.6
WW	79
YW	125
MCE	12
Milk	28
MWW	67
API	149
TI	82

CE	BW	WW	YW	MCE	Milk	MWW	CW	YG	MARB	STAY	API	TI
10	2.2	74	105	14	21	59	34.8	-0.28	0.00	19.5	116	70

- AI bred to Connealy Right Answer 746 (2517642) on 5/26/14. Safe to AI date. Heifer calf, due 3/7/15.
- Pasture exposed to Hart Final Answer 0048 (2752024) from 6/1/14 to 8/15/14.
- RFS Miss Maya is the first heifer offered from our "Harley" herd sire we purchased from the Keller Ranch. She is homo black and homo polled by pedigree. Maya comes from a special cow family. Her young dam has sold two outstanding bulls in our annual production sales--one was the lead-off bull in our 2013 sale catalog. Maya's 16-year-old granddam continues to bring home a good one. She weaned a bull calf in October and has maintained a 368-day calving interval with 14 natural calves. Maya is one of our best and shouldn't leave the farm and her half blood heifer calf that is due on 3/7/15 will not leave yours!



Lot 38

39 DCR Ms R/Redgie A480

Consignor: Doll Ranch - New Salem, ND

BD: 4/7/13 • ASA#: 2784218 • Tattoo: A480 • Bred
PB SM • Red • Polled • Adj. BW: 80 • Adj. WW: 645

WFL MR WESTWAY 50X

R PLUS REDGE 8018U
WFL RED DORA 8036U

DCR MS RED RIBEYE S89

R PLUS RED RIBEYE 1134L
DCR MS DRIVER P215

PLANNED MATING EPDS	
CE	12
BW	1.3
WW	74
YW	116
MCE	12
Milk	29
MWW	66
API	136
TI	78

CE	BW	WW	YW	MCE	Milk	MWW	CW	YG	MARB	STAY	API	TI
7	2.3	74	127	12	27	64	49.1	-0.14	-0.17	22.2	111	66

- AI bred to WS Beef Maker R13 (2289889) on 5/7/14. Ultrasound safe to AI date.
- Pasture exposed to Prairie Wind Sabre 21W (2573916) from 6/1/14 to 8/1/14.
- We have calved out the first 50X daughters and they are great! They may have the best udders on the place. A480 is a 3/4 sister to our other consignment A416. A480 is carrying a Beef Maker offspring, which should be a great mating. Her mother has been a very good producer and her granddam has a 109-weaning index.



Lot 39



WS All In W111 - Reference Sire

40 Rockin R Rosetta A40

Consignor: Rockin R Farm - Mauston, WI

BD: 4/7/13 • ASA#: 2758824 • Tattoo: A40 • Bred
PB SM • Red • Polled • Adj. BW: 85 • Adj. WW: 696

WS ALL IN W111

HSF HIGH ROLLER 12T
WS MISS TRACY T50

ROCKIN R FANCY Y40

TRIPLE C GAMES OVER S517
ROCKIN R TERRI T89

PLANNED MATING EPDS	
CE	16
BW	-0.1
WW	76
YW	118
MCE	16
Milk	27
MWW	65
API	143
TI	76

CE	BW	WW	YW	MCE	Milk	MWW	CW	YG	MARB	STAY	API	TI
13	1.1	71	104	13	29	64	32.7	-0.27	0.00	23.7	129	70

- AI bred to OLF Otis Y43 (2613322) on 6/11/14. Safe to AI date. Bull calf.
- Pasture exposed to KS Shamwari A485 (2758037) from 7/2/14 to 8/30/14.
- Rosetta, out of WS All In, is above average in almost every EPD. She has an excellent disposition and will make a very productive cow. Her planned mating to OLF Otis should prove to be very exciting. She is safe to the AI date. Her bull calf should pay for her in the very first year!

Sim Angus Bred Females



41A KnH Hey Girl 158A

Consignor: KNH Simmentals - Berthold, ND

BD: 1/7/13 • ASA#: 2790156 • Tattoo: 158A • ET • Bred

1/2 SM 1/2 AN • Homo Black • Homo Polled • Adj. BW: 73 • Adj. WW: 610

S CHISUM 6175

S ALLIANCE 3313
S GLORIA 464

KNH MISS 58S

SRS J914 PREFERRED BEEF
KNH MAREN 32M

PLANNED MATING EPDS	
CE	12
BW	1.2
WW	66
YW	96
MCE	12
Milk	27
MWW	60
API	138
TI	73

CE	BW	WW	YW	MCE	Milk	MWW	CW	YG	MARB	STAY	API	TI
11	1.1	74	124	11	30	67	45.5	-0.11	0.35		131	77

- AI bred to WAGR Dream Catcher (2289346) on 5/16/14. Safe to AI date.
- No pasture exposure.

• These 2 full sisters are big time brood cows in the making! They are some of the most complete, easiest fleshing, docile, huge ribbed, powerful females we have raised and we would love a whole herd of cows just like them. The decision to let both of these girls go has been difficult. We want to showcase what our donor cow, Miss 58S, can do, and Jeff thought the full sister thing would be cool! 58S's Sharper Image daughter, KnH Play On 458Z, went on to be high-selling heifer at last year's ND State Sale, plus she's had a couple bulls in the Edge of the West sale go on to be sale toppers...KnH Added Value 58W (ABS). Our daughter, Dawson, showed KnH Hey Girl 158A this summer and highlights were 7th overall % female at the Western Junior Regional, and she was crowned 2014 FFA Supreme Champion overall breeds at the ND State Fair. These girls are ultrasound safe to proven CE PB Simmental bulls so they will have 3/4 blood babies this Spring. 158A is bred to Dream Catcher, which is something a little different & what we feel will be a very interesting cross. 758A is bred to Olie...we have a 58S x Olie (258Z) at home that is an up-&-coming donor for us. Check out our website for pics of her! Both heifers have very balanced individual EPD's and projected numbers for their calves. Reserving the right to a flush on each of these females at seller's expense and buyer's convenience.

41B KnH Chisum 758A

Consignor: KNH Simmentals - Berthold, ND

BD: 2/13/13 • ASA#: 2790153 • Tattoo: 758A • ET • Bred

1/2 SM 1/2 AN • Homo Black • Homo Polled • Adj. BW: 77 • Adj. WW: 607

S CHISUM 6175

S ALLIANCE 3313
S GLORIA 464

KNH MISS 58S

SRS J914 PREFERRED BEEF
KNH MAREN 32M

PLANNED MATING EPDS	
CE	14
BW	0.3
WW	67
YW	108
MCE	12
Milk	27
MWW	60
API	144
TI	74

CE	BW	WW	YW	MCE	Milk	MWW	CW	YG	MARB	STAY	API	TI
11	1.1	74	124	11	30	67	45.5	-0.11	0.35		131	77

- AI bred to Ellingson Legacy M229 (Olie) (2171761) on 5/23/14. Safe to AI date.
- Pasture exposed to W/C Dream Catcher 34A (2785212) from 6/9/14 to 8/7/14.

42 KRJ A304

Consignor: Double J Farms - Garretson, SD

BD: 2/3/13 • ASA#: 2763483 • Tattoo: A304 • Bred

1/2 SM 1/2 AN • Homo Black • Polled • Adj. BW: 95 • Adj. WW: 786

S A V FINAL ANSWER 0035

SITZ TRAVELER 8180
S A V EMULOUS 8145

DOUBLE J MISS Y195

TNT TANKER U263
PK1

PLANNED MATING EPDS	
CE	16
BW	-1.0
WW	66
YW	109
MCE	13
Milk	22
MWW	55
API	154
TI	78

CE	BW	WW	YW	MCE	Milk	MWW	CW	YG	MARB	STAY	API	TI
11	1.2	79	123	15	22	62	44.9	-0.14	0.33		134	78

- AI bred to GW Premium Beef 021TS (2370545) on 4/30/14. Safe to AI date.
- Pasture exposed to LFC Mr Brill Z204 (2694993) from 5/24/14 to 7/1/14.
- Here is a big bodied, powerfully made female with a big square hip and as thick as you can make one. Out of one of our best young cows with a WW ratio of 115 on 2 calves. This female's MCE ranks in the top 2%, WW in top 3% and YW in the top 4% of the breed. This is the kind that make you money! Video at www.doublejsimmentals.com.



Lot 42



Lot 43

43 CCE Ms Red Cloud 336A

Consignor: Clay Ekstrum - Kimball, SD

BD: 2/10/13 • ASA#: 2785101 • Tattoo: 819A • Bred
3/4 SM 1/4 AR • Red • Polled • Adj. BW: 87 • Adj. WW: 626

LFE BLACK LAKOTA 385W

R PLUS BLACKEDGE
KJLI RAZZLE DAZZLE 628R

CCE EKR MS TC 819U

TNT TOP CUT P274
CCE EKR MS. PRINCESS 509

PLANNED MATING EPDS	
CE	12
BW	1.0
WW	61
YW	91
MCE	12
Milk	24
MWW	54
API	92
TI	58

CE	BW	WW	YW	MCE	Milk	MWW	CW	YG	MARB	STAY	API	TI
7	2.4	68	108	7	21	55	38.1	-0.06	-0.11	14.1	94	62

- **AI bred to CCE EKR Copy Right 028Z (2659032) on 4/24/14. Safe to AI date.**
- **Pasture exposed to VA In Style 2042 (17741850) from 5/1/14 to 5/30/14.**
- Solid red heifer that as a calf Luke Keller picked out of the pasture and then as a bred, Jeff Thomas picked her for this sale. Her half sister was the high-selling red heifer in the South Dakota Source Inaugral sale. Another red pedigree that is different and bred to an outcross homo polled, hetero black calving ease bull. Homo polled test and dilution test will be available sale day.



Lot 44

44 DJF A379

Consignor: Double J Farms - Garretson, SD

BD: 2/17/13 • ASA#: 2763590 • Tattoo: A379 • Bred
3/4 SM 1/16 AR 1/16 CS 1/8 MX • Black • Polled • Adj. BW: 104 • Adj. WW: 779

GIBBS 0689X CRIMSON TIDE

MR NLC UPGRADE U8676
SSF BLK LUCY S727

DOUBLE J MISS M279

ER BLACK CISCO 532C
DOUBLE J MISS E517

PLANNED MATING EPDS	
CE	13
BW	1.1
WW	67
YW	103
MCE	13
Milk	27
MWW	61
API	144
TI	78

CE	BW	WW	YW	MCE	Milk	MWW	CW	YG	MARB	STAY	API	TI
6	3.6	77	120	10	24	62	46.6	-0.08	0.18	16.2	113	73

- **AI bred to KNH Added Value 58W (2503672) on 5/21/14. Safe to AI date.**
- **Pasture exposed to LFC Mr Bril Z204 (2694993) from 5/24/14 to 7/1/14.**
- Check out the power and substance this female will transmit to her offspring with a 112 WW ratio and a WW EPD in the top 5%. We shouldn't sell this one as her mother is not around to make more and her consistency is second to non. Video available at www.doublejsimmetnals.com.

45 WCS Ms Power 337A

Consignor: Western Cattle Source - Crawford, NE

BD: 2/18/13 • ASA#: 2745479 • Tattoo: 337A • Bred
3/4 SM 3/16 AN 1/16 HH • Black • Polled • Adj. BW: 83 • Adj. WW: 598

ES POWER UP XS37

MR NLC UPGRADE U8676
ESS37

WCS MS FIGURE 8064U

KS WCS FIGURE THIS M11
WCS MISS FROST 555R

PLANNED MATING EPDS	
CE	8
BW	2.7
WW	68
YW	95
MCE	10
Milk	21
MWW	55
API	114
TI	68

CE	BW	WW	YW	MCE	Milk	MWW	CW	YG	MARB	STAY	API	TI
6	3.9	66	83	8	21	54	24.5	-0.30	0.21		103	63

- **AI bred to WCS Chevy 327A (2745412) on 5/15/14. Vet checked safe to AI date.**
- **Pasture exposed to WCS Chevy 327A (2745412) from 5/11/14 to 6/28/14.**
- I cannot say enough good things about this female. This 3/4 blood female is flat good. She is feminine, big ribbed and broody. With lots of mass and muscle in her. 337A is super free and easy in her movement and very structurally correct. Her mom and grandmother are some of our best cows. They just get it done every year. This Power Up female is flat good and she exemplifies what his females look like. You can build a program around her.



Lot 46

46 Miss A/H 157A

Consignor: A/H Cattle Company - Claremont, SD

BD: 2/22/13 • ASA#: 2890713 • Tattoo: 157A • Bred
3/4 SM 1/4 AN • Black • Polled • Adj. BW: 74 • Adj. WW: 655

CCR CONVOY 7005X

G A R PREDESTINED
CCR 5025R STAR 7005T

MISS A/H 7Y

SS EBONYS GRANDMASTER
MISS LH3S 7R

PLANNED MATING EPDS	
CE	11
BW	1.5
WW	63
YW	100
MCE	7
Milk	29
MWW	60
API	129
TI	72

CE	BW	WW	YW	MCE	Milk	MWW	CW	YG	MARB	STAY	API	TI
3	3.0	66	103	7	21	54	36.2	-0.11	0.57		112	73

- **AI bred to Lchmn Bright Light L122L (2110803) on 5/17/14. Safe to AI date.**
- **No pasture exposure.**
- 157A is a solid black, polled, 3/4 blood heifer that comes from a first calf heifer that hit an absolute homerun right out of the box. This heifer has as much depth of body, spring of rib, fleshing ability and overall internal dimension as you are going to find. She does all this and is still extremely sound and fluid in her movement. A lot of mating possibilities in this breeding piece, whether you want to raise percentage cattle or purebreds. Please visit www.hansen-ranch.com after 11/15/14 to view video of this heifer.

47 MLC Ms Rushmore A616

Consignor: Mandan Lake Creek Simmental Ranch - Center, ND

BD: 3/7/13 • ASA#: 2804309 • Tattoo: A616 • Bred
3/4 SM 1/4 AR • Red • Polled • Adj. BW: 74 • Adj. WW: 645

TRAXS RUSHMORE X103

THSF FREEDOM 300N
MISS TRAX U850

MLC MS CONQUEST Y599

HXC CONQUEST 4405P
MLC MS RED LIGHT T38

CE	18
BW	-5.5
WW	51
YW	79
MCE	11
Milk	30
MWW	55
API	171
TI	77

CE	BW	WW	YW	MCE	Milk	MWW	CW	YG	MARB	STAY	API	TI
11	-0.2	71	108	11	25	61	33.8	-0.24	0.14		127	72

- AI bred to WBF Rest Easy (2472430) on 6/10/14. Safe to AI date. Bull calf.
- Pasture exposed to Kinns Easy Iron 110A (2775260) from 6/24/14 to 7/24/14.
- What a neat package here! These Rushmore daughters tie in calving ease, growth, and maternals! Nice set of EPD's and with this mating should generate an outcross calving ease sire. Very attractive, nice put together female!



Lot 47

48 Ms Grant 3003A

Consignor: Homestake Ranch Inc - Wolesey, SD

BD: 3/22/13 • ASA#: 2781321 • Tattoo: 3003A • Bred
1/2 SM 1/2 CS • Black • Polled • Adj. BW: 77

MR NLC UPGRADE U8676

ELLINGSON LEGACY M229
MS NLC MOJO S6119 B

X055

CE	11
BW	1.1
WW	59
YW	85
MCE	7
Milk	26
MWW	56
API	108
TI	60

CE	BW	WW	YW	MCE	Milk	MWW	CW	YG	MARB	STAY	API	TI
8	1.8	69	103	4	25	60	33.2	-0.47	0.10		97	67

- AI bred to Westfall Voyager 721P (2276508) on 5/11/14.
- Safe to AI date. Bull calf, due 2/11/15.
- Ms Grant 3003A is one of our top bred heifers. She is a thick-topped and high performing heifer out of Upgrade. She will be an excellent cow and is AI bred safe to Voyager with a bull calf due mid-February.



Lot 48

49 Ms Kennedy 383A

Consignor: Homestake Ranch Inc - Wolesey, SD

BD: 3/25/13 • ASA#: 2781298 • Tattoo: 383A • Bred
3/4 SM 1/8 AN 1/8 CS • Black • Polled • Adj. BW: 71

WAGR DREAM CATCHER 03R

CNS DREAM ON L186
3C MELODY M668 BZ

W901

3C MACHO M450 BZ
404P

CE	9
BW	1.5
WW	70
YW	99
MCE	10
Milk	27
MWW	61
API	132
TI	77

CE	BW	WW	YW	MCE	Milk	MWW	CW	YG	MARB	STAY	API	TI
8	0.8	56	72	10	23	51	13.3	-0.44	0.29		118	65

- AI bred to Mr NLC Upgrade U8676 (2474338) on 5/11/14.
- Safe to AI date. Bull calf, due 2/10/15.
- This long bodied, strong top-lined, bred heifer is carrying an Upgrade bull calf due in mid-February. Her high performance will make her a great addition to any herd.



Lot 49

50 GFF A16 Miss Annie

Consignor: Gregg Family Simmental - Eureka, SD

BD: 5/14/13 • ASA#: 2842752 • Tattoo: A16 • Bred
3/4 SM 1/8 AN 1/8 CS • Hetero Black • Polled • Adj. BW: 79

AJE/HS/MBCC CASANOVA W4

STF MONTANA BLACK KF25
JF EBONYS JOY 479P

T57W

LAZY H PATHFINDER R104
T57

CE	14
BW	-1.4
WW	53
YW	70
MCE	10
Milk	29
MWW	55
API	131
TI	63

CE	BW	WW	YW	MCE	Milk	MWW	CW	YG	MARB	STAY	API	TI
9	1.3	52	72	5	21	47	14.6	-0.27	0.18		106	58

- AI bred to CDI Vegas 26X (2595688) on 4/28/14. Safe to AI date.
- No pasture exposure.
- Here is a very thick and moderate bred heifer whose sire we purchased from Hilbrands Simmentals. He is a full brother to the very popular donor cow, Hope Floats, at Tingle Farms. Her mating to Doug Bichler's Vegas bull should really work.



Lot 50

Purebred Open Females



Lot 51 - Reference Female



Lot 51 - Reference Female



Lot 51 - Reference Female

Lot 51 reference images, clockwise: Inside left - KBHR Z354, 2013 Keller Sale High Selling heifer, Top right - KBHR Miss Naomi Y085, 2012 Keller Sale High Selling heifer, Bottom right - KBHR Miss Kimberly Y022, 2011 ND Classic Sale High Seller

51 Pick of 2014 Born Heifers

Consignor: Keller Broken Heart Ranch - Mandan, ND

• We are offering choice of our 2014 born heifer calves. This includes replacement and sale heifers. This is the first time we have offered pick of our heifer calf crop and we felt it was right to offer this opportunity at the ND state sale this year. Choose from 200 heifers, approximately 50/50 mix of blacks and reds. Sires represented include: GW WBF Substance, SAV Final Answer, S Chisum, CCR Cowboy Cut, CDI Journey, Hook's Zebulon, GW Redestined, Hook's Zig Zag, Hook's Yukon, HXC Conquest, and CDI Iditarod. Selection must be made by 3/1/15.

52 ZF Penny 423B

Consignor: Zimmer Family - Clarissa, MN

BD: 1/1/14 • ASA#: 2865278 • Tattoo: 423B • Open
PB SM • Black • Polled • Adj. BW: 92



NEW TREND WAY COOL 6W

WHEATLAND BULL 680S
KEYSTONE RADIANCE 13R

ZF 808U DAISY

SVF/NJC BUILT RIGHT N48
GLS NESTEA N42

CE	BW	WW	YW	MCE	Milk	MWW	CW	YG	MARB	STAY	API	TI
5	4.8	70	105	5	24	58	39.6	-0.36	0.05	18.5	106	65

• This heifer is clean fronted, moderate framed and sound. She has tremendous dimension and depth. She will only get better as she matures into a cow!



Lot 53



Lot 52

53 KnH Becken 601B

Consignor: KNH Simmentals - Berthold, ND

BD: 2/7/14 • ASA#: 2896097 • Tattoo: 601B • Open

PB SM • Homo Black • Homo Polled • Adj. BW: 78 • Adj. WW: 623



TNT AXIS X307

TNT TUITION U238
TNT MISS U27

KS MISS LEGACY U601

NICHOLS LEGACY G151
KS MISS CORRELATOR S444

CE	BW	WW	YW	MCE	Milk	MWW	CW	YG	MARB	STAY	API	TI
11	-1.5	65	95	10	26	59	24.1	-0.33	0.34	138	75	

• A purebred, homo black, polled, TNT Axis daughter out of one of our most consistent producing cows that we purchased from Kenner's. Becken's maternal brother, KnH Chisum 601Y, was a top-selling bull in 2012 going to Hart Farms, SD. We were fortunate to use him on a couple of our heifers that Spring & they went on to be 2 of our top bulls last year. One of those bulls we kept for ourselves and we couldn't be happier with him...check out our website for info and pictures on KnH Chisel 144A. A maternal sister to Becken 601B sold to Mark Nesemeier a few years back, and another sib our son Jaden showed successfully in 2013. Again, very consistent cow family and excellent EPD package to go along with this solid black heifer calf!

54 *SSL* Prime Lady B1410



Consignor: Stangeland Simmentals - Glenfield, ND
 BD: 2/12/14 • ASA#: 2880040 • Tattoo: B1410 • ET • Open
 PB SM • Red • Homo Polled • Adj. BW: 78 • Adj. WW: 546

WS PRIME BEEF Z8

WS BEEF KING W107
 HSF MISS SKY 87U

KS MISS SEQUOIA W639

HOOKS/KS SEQUOIA 35S
 KS TAMMY T204

CE	BW	WW	YW	MCE	Milk	MWW	CW	YG	MARB	STAY	API	TI
15	-0.7	68	92	15	26	60	23.2	-0.35	0.26	22.2	145	77

• B1410 is a very solid, moderate framed, well put together heifer. Her dam was purchased from Kenner Simmentals in 2011 and has become a top producer in our herd. This dark red heifer has potential of being an outstanding female.



Lot 55



Lot 56

57 *KR* Miss Avery B3

Consignor: Kaelberer Simmental Ranch - New Salem, ND
 BD: 2/21/14 • ASA#: 2902403 • Tattoo: B3 • Open
 PB SM • Red • Homo Polled • Adj. BW: 74 • Adj. WW: 665

TRAXS RUSHMORE X103

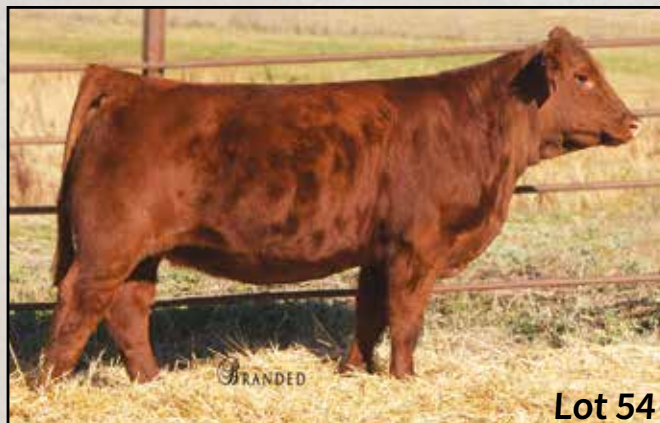
THSF FREEDOM 300N
 MISS TRAX U850

SRF MISS 206Z

ELLINGSON LEGACY M229
 PELTON MISS BRINA 1449U

CE	BW	WW	YW	MCE	Milk	MWW	CW	YG	MARB	STAY	API	TI
14	-1.1	64	96	13	24	56	25.1	-0.49	0.11	20.2	133	72

• This female brings a lot to the table. Every sire in her pedigree was a cow maker. She started out little and grew into a real maternal powerhouse. The 1449 cow has become an amazing producer for our group. Her sister also had one of the heaviest weaning calves in the keeper pen this year. As Jeff says, "This sale is all about Mama cows!"



Lot 54

55 *THSR* Ryans Outback B480



Consignor: Triple H Simmentals - Hannaford, ND

BD: 2/15/14 • ASA#: (2854576) • Tattoo: B480 • Open
 PB SM • Hetero Black • Homo Polled • Adj. BW: 95 • Adj. WW: 706

HPF/Ryan EXPEDITION Y039

EXPEDITION T049
 CNS PERFECTION R521

THSR MISS OUTBACK Z253

DRS J91 OUTBACK 604S
 THSR MISS U851

CE	BW	WW	YW	MCE	Milk	MWW	CW	YG	MARB	STAY	API	TI
8	4.1	75	114	12	21	58	44.0	-0.26	0.04	18.6	111	68

• Homo Polled and Hetero Black. We feel like this heifer has serious potential both in the show ring where she will command attention and more importantly, as a cow. This year's junior regional will be held in Austin MN and I think this heifer could stand some competition. She is nice fronted, long sided, big hiped, and graceful on the move. This female also comes from the same cow family as our bred heifer.

56 *DJF* Cut and Dried B460



Consignor: Double J Farms - Garretson, SD

BD: 2/18/14 • ASA#: 2898263 • Tattoo: B460 • ET • Open
 PB SM • Black • Homo Polled • Adj. BW: 92 • Adj. WW: 765

CCR COWBOY CUT 5048Z

TRIPLE C SINGLETARY S3H
 CCR MS 4045 TIME 7322T

DOUBLE J MISS T739

CNS DREAM ON L186
 DOUBLE J MISS R542

CE	BW	WW	YW	MCE	Milk	MWW	CW	YG	MARB	STAY	API	TI
10	2.7	77	111	11	19	58	39.2	-0.32	0.13	26.4	138	74

• What a cow family here! With the dam and granddam producing high-sellers last year in this sale, it becomes evident just how powerful the blood is. Dam is posting a 114 WW ratio and 108 YW ratio. API and TI are in the top 15% of the breed for cut and dried! Bid with confidence. No guess work here! Video at www.doublejsimmentals.com.

*For the Latest
 Updated Sale Information...*

Check the website for updated photos, videos
 and information of some lots prior to the sale!

www.northdakotasimmental.com



Lot 58

58 BCLR Miss All In B419



Consignor: Bichler Simmentals - Linton, ND

BD: 2/21/14 • ASA#: (2902496) • Tattoo: B419 • Open
PB SM • Red • Homo Polled • Adj. BW: 93 • Adj. WW: 719

WS ALL IN W111

HSF HIGH ROLLER 12T
WS MISS TRACY T50

KS ZADA Z887

BCLR SHAMWOW W611
KS PENNY X395

CE	BW	WW	YW	MCE	Milk	MWW	CW	YG	MARB	STAY	API	TI
14	1.9	94	137	12	31	77	53.2	-0.20	0.18		142	84

• We are excited to showcase this heifer calf whose dam was one of the high-selling breds purchased in this sale last year. She is extremely broody, attractive and high performing and would make a great addition to any herd! Homozygous Polled by pedigree.



Lot 59

59 THSR Ryans Dream B497



Consignor: Triple H Simmentals - Hannaford, ND

BD: 2/21/14 • ASA#: (2854593) • Tattoo: B497 • Open
PB SM • Red • Homo Polled • Adj. BW: 82 • Adj. WW: 691

HPF/RYAN EXPEDITION Y039

EXPEDITION T049
CNS PERFECTION R521

THSR XUE X069

DRS J91 OUTBACK 604S
THSR LIVINTHEDREAM S626

CE	BW	WW	YW	MCE	Milk	MWW	CW	YG	MARB	STAY	API	TI
12	1.1	61	89	13	22	53	24.7	-0.33	0.01	20.1	119	64

• Homo Polled, Non-diluted Red. Ryan's Dream is a super attractive heifer with a ton of potential. She is long bodied, clean fronted, extremely stylish with a ton of capacity. Ryan has it all – to excel walking the chips and going on to be a super star brood cow. Brayden and Landon asked why we are selling two of our best heifers and why they can't keep them to show for themselves. I told them we always bring our best to the Classic Sale and this year is no exception.

60 TT Red Diamond 431B

Consignor: Double T Simmentals - Turtle Lake, ND

BD: 2/22/14 • ASA#: (2859785) • Tattoo: 431B • Open
PB SM • Red • Polled • Adj. BW: 89 • Adj. WW: 662

TNT AXIS X307

TNT TUITION U238
TNT MISS U27

TT MS DEXTER 231Z

KS DEXTER L691
TT LADY IN RED 931U

CE	BW	WW	YW	MCE	Milk	MWW	CW	YG	MARB	STAY	API	TI
7	3.5	88	126	10	21	65	49.0	-0.25	0.22		118	78

• TT Red Diamond is an Axis female you will not want to miss. Red Diamond indexed a 106 within her contemporary group. She is in the top 1% for weaning weight EPD and top 2% for yearling weight EPD. This big stout heifer is big topped, with a tremendous hip and quarter. Her mother is a Dexter cow that has only just begun to set her mark. TT Red Diamond has power, milk and style all built into one package.



Lot 60

61 BTS Ms CJ 4083B

Consignor: Black Tie Simmentals - Kindred, ND

BD: 2/25/14 • ASA#: 2890171 • Tattoo: 4083B • Open
PB SM • Black • Homo Polled • Adj. BW: 81 • Adj. WW: 814

KS CAPTN JACK T518

HOOKS SHEAR FORCE 38K
BCLR MISS REBECCA R505

BTS MS IRON 2095Z

RFS RED IRON T20
RDDS MS LUCKY DICE 880T

CE	BW	WW	YW	MCE	Milk	MWW	CW	YG	MARB	STAY	API	TI
10	2.1	80	109	11	24	64	36.7	-0.38	0.15	16.4	120	77

• KS Captn Jack daughter that is homozygous polled and offers a great set of EPD's. BTS MS CJ 4083B is in the top 4% for weaning weight and 15% for yearling weight. MS CJ offers well above average growth (115% weaning weight ratio) while maintaining a very acceptable birth EPD's.



Lot 61

62 *BTS* Ms Iron 4105B

Consignor: Black Tie Simmentals - Kindred, ND

BD: 2/28/14 • ASA#: 2890184 • Tattoo: 4105B • Open

PB SM • Hetero Black • Homo Polled • Adj. BW: 85 • Adj. WW: 742

RFS RED IRON T20

35R
RF RAUL

BTS PT BLACK LADY 833U

ES DAKOTA NK68
KSR SAVANNAH 691R

CE	BW	WW	YW	MCE	Milk	MWW	CW	YG	MARB	STAY	API	TI
7	3.5	72	103	14	25	61	36.2	-0.42	0.15	19.4	118	71

• RFS Red Iron daughter that is homozygous polled with a very balanced set of EPD's. 4105B is out of a "Home Run" Dakota female (BTS Black Lady 833U)... BTS Black Lady 833U has a WW ratio of 102 and a YW ratio of 104 (5 Calves) all with a 377 calving Interval. 4105B posted a 742 lbs Adj WW with a ratio of 105... all this with a very acceptable birth weight. Make sure to look up BTS MS IRON 4105B on sale day.



Lot 62



Lot 63

63 *BRKC* Gemstone B454

Consignor: Rocky Knoll Cattle - Highmore, SD

BD: 2/28/14 • ASA#: (2891586) • Tattoo: B454 • ET • Open

PB SM • Red • Polled • Adj. BW: 79 • Adj. WW: 751

JF MILESTONE 999W

TNT TOP GUN R244
MS MAXIE LOU M112S

HSF/HS SHEZA BEAUTY U823

CNS DREAM ON L186
SVF SHEZA BEAUTY L901

CE	BW	WW	YW	MCE	Milk	MWW	CW	YG	MARB	STAY	API	TI
9	2.0	81	117	9	16	57	41.7	-0.25	-0.01	26.1	132	73

• Gemstone is an exquisitely made heifer with style and power. She possesses perfect hip structure, extreme mass, a level underline and a big foot. She will excel in the show ring and the pasture. Her pedigree speaks for itself. The combination of Milestone and Sheza Beauty has proven to make superior females. With a calm personality, she will be a great show prospect.



Lot 64

64 B50



Consignor: Kline Simmental Ranch - Hurdsfield, ND

BD: 3/3/14 • ASA#: 2867831 • Tattoo: B50 • Open

PB SM • Red • Polled • Adj. BW: 92 • Adj. WW: 709

CDI KING RED 216Y

WS BEEF KING W107
CDI MS RECOIL 128T

DSR RED EMPRESS U237

KBHR S077 JAKE
DSR CHANEL K94

CE	BW	WW	YW	MCE	Milk	MWW	CW	YG	MARB	STAY	API	TI
7	3.6	79	112	13	24	64	40.9	-0.29	0.10		112	70

• B50 has been a standout all year. She is thick made, powerful and out of a very productive cow. U237 is an easy fleshing, long bodied, thick cow with a lot of milk and a great udder. We have a full sister to B50 in our bred heifer pen that looks awesome. The King Red daughters as a group look tremendous and we are excited to calve them out.



OLF Otis Y43 - Reference Sire

65 *Ulmer* Cow B214

Consignor: Ulmer Cattle Enterprises - Oakes, ND

BD: 3/3/14 • ASA#: 2902542 • Tattoo: B214 • Open

PB SM • Red • Polled • Adj. BW: 93 • Adj. WW: 652

OLF OTIS Y43

OLF ODIN U5
OLF MISS GUNNER W8

OLF MISS BBS UT Z214

BBS UNTOUCHABLE X46
OLF MISS GUNNER W24

CE	BW	WW	YW	MCE	Milk	MWW	CW	YG	MARB	STAY	API	TI
13	3.0	80	127	15	24	64	49.8	-0.27	0.04	23.9	135	75

• Sired by Mr. EPDs (OLF Otis). Here is a real soggy bellied, stout made, solid red female that's got brood cow written all over her. Check out this one's EPDs... you can't go wrong here!

66 B47



Consignor: Kline Simmental Ranch - Hurdsfield, ND

BD: 3/6/14 • ASA#: 2867825 • Tattoo: B47 • Open
PB SM • Red • Polled • Adj. BW: 98 • Adj. WW: 688

CDI KING RED 216Y

WS BEEF KING W107
CDI MS RECOIL 128T

KSR CHATAEU 867T

SARGE F6039
KSR REBA 753F

CE	BW	WW	YW	MCE	Milk	MWW	CW	YG	MARB	STAY	API	TI
6	4.4	84	118	11	17	59	45.7	-0.22	0.10		108	71

• B47 is our best red heifer calf. She has been good from day one, and was always the one to catch eyes first all summer in the pasture. Her dam has been a great producer for us, raising a full brother last year who was our top-selling red bull in our 2014 Bull Sale to Aaron Hertz. B47 is fancy, feminine and classy, and also sired by King Red who will boost her maternal potential.



Lot 66



TNT Tanker U263 - Reference Sire



Lot 68



Lot 69

67 RRSS Tanker B07



Consignor: Schmidt Simmentals - Center, ND

BD: 3/11/14 • ASA#: 2879322 • Tattoo: B07 • Open
PB SM • Adj. BW: 93

TNT TANKER U263

MR NLC SUPERIOR S6018
TNT MISS S17

RRSS KNOCK`N HEMI W907

TNT KNOCK OUT R206
TNT MISS R118

CE	BW	WW	YW	MCE	Milk	MWW	CW	YG	MARB	STAY	API	TI
4	3.0	75	116	13	22	60	43.1	-0.37	-0.07	18.1	103	67

• These Tanker calves have a lot of performance and look. B07 is solid throughout. With her genetics, she will produce some high dollar calves.

68 TT Red Fox 435B

Consignor: Double T Simmentals - Turtle Lake, ND

BD: 3/16/14 • ASA#: 2859758 • Tattoo: 435B • Open
PB SM • Red • Polled • Adj. BW: 86 • Adj. WW: 689

RFS RED IRON T20

35R
RF RAUL

BTS MS EXT S635

P418
BTS MS RIDER M220

CE	BW	WW	YW	MCE	Milk	MWW	CW	YG	MARB	STAY	API	TI
4	3.6	74	107	10	24	61	38.4	-0.35	0.16		103	68

• Red Fox is a high performance, Red Iron daughter that has that sweet, attractive look. She is clean fronted, with tremendous rib shape and hip. Red Fox is a full sister to Morgan Reiser's heifer that was 2nd in the ND Points program in 2014. With her sweet, classy look, she will be a force for this year's show ring. With her performance, volume and pedigree she will be a winner in your cow herd for years to come.

69 Miss Blayke 431B

Consignor: Homestake Ranch Inc - Wolsey, SD

BD: 3/25/14 • ASA#: 2894752 • Tattoo: 431B • Open
PB SM • Black • Polled • Adj. BW: 75

MR NLC UPGRADE U8676

ELLINGSON LEGACY M229
MS NLC MOJO S6119 B

TESCH BROS MISS ON LINE

MR RMH KNIGHT DRIVE M89
MS. RMH ON LINE N43

CE	BW	WW	YW	MCE	Milk	MWW	CW	YG	MARB	STAY	API	TI
7	1.9	70	108	9	27	62	37.1	-0.44	0.28	20.2	131	76

• Miss Blayke 431B is a super thick made, powerful heifer calf sired by Upgrade. She is halter broke and her quiet disposition will make her a great show prospect. Her performance and structural soundness will make her a great cow after the show barn.

70 Rockin R Bella B22

Consignor: Rockin R Farm - Mauston, WI

BD: 3/25/14 • ASA#: 2884770 • Tattoo: B22 • Open
PB SM • Black • Polled • Adj. BW: 77 • Adj. WW: 590

MCM TOP GRADE 018X { MR NLC UPGRADE U8676
MCM 513R

ROCKIN R ATHENA { SRS 60W MONTANA
SRS W22

CE	BW	WW	YW	MCE	Milk	MWW	CW	YG	MARB	STAY	API	TI
12	-0.7	51	85	13	35	61	20.2	-0.33	0.42		144	70

• We purchased B22's granddam at the Skillestad dispersal sale. Bella has to be appreciated for how she puts all the right pieces together. She is free-moving with a calm disposition. With her pedigree, she will develop into a very broody cow. She has all the qualities to raise top-end herd bulls or high-end replacement females.

71 Rockin R Dazzle B105

Consignor: Rockin R Farm - Mauston, WI

BD: 4/2/14 • ASA#: 2884771 • Tattoo: B105 • Open
PB SM • Black • Hetero Polled • Adj. BW: 85 • Adj. WW: 638

MCM TOP GRADE 018X { MR NLC UPGRADE U8676
MCM 513R

ROCKIN R MUFFIN { SRS 60W MONTANA
KS MISS BULL DOZER R638

CE	BW	WW	YW	MCE	Milk	MWW	CW	YG	MARB	STAY	API	TI
11	1.0	60	97	12	30	60	29.5	-0.30	0.38		134	71

• Dazzle comes from one of our strongest cow families. Her granddam, R638, has produced numerous high-selling bulls and heifers. This Top Grade daughter may be the best of the line.

Sim Angus Open Females



Lot 72A

72A KNH Brooke 401B

Consignor: KNH Simmentals - Berthold, ND

BD: 1/7/14 • ASA#: 2896152 • Tattoo: 401B • ET • Open
3/4 SM 1/4 AN • Homo Black • Homo Polled • Adj. BW: 79 • Adj. WW: 649

TJ SHARPER IMAGE 809U { DIKEMANS SURE BET
T J MISS BANDO S27

KNH MISS 58S { SRS J914 PREFERRED BEEF
KNH MAREN 32M

CE	BW	WW	YW	MCE	Milk	MWW	CW	YG	MARB	STAY	API	TI
9	1.9	74	117	14	24	61	42.6	-0.06	0.32		129	75

• Selling choice of these 2 full sibs who are daughters of TJ Sharper Image & our donor cow, KnH Miss 58S. Even cooler is that they are also FULL sisters to KnH Play On 458Z, the high-selling female at last year's ND State Sale going to Quandt Brothers and Magill Farms! Play On was many-time champion during her show career in 2013 with the highlight of being chosen for the top 20 (18th) at the Jr Nationals in Lincoln, NE! But the best part is that she raised a big calf last summer and also flushed tremendously as a 1st calf heifer! So not only can these 2 open heifers be a great project for a junior this year, but more importantly they will also move on to be productive cows for you in the long run, backed by tremendous cow families on both sides. Make sure you notice the EPD value on them as they are in the top 10% for WW & YW and top 5% for MCE. Brooke and Brooklyn are tough for us to choose which one we like better so we are going to leave that decision to the lucky bidder! Both are gentle as can be and are wonderful to work with!



Lot 72B

72B KNH Brooklyn 405B

Consignor: KNH Simmentals - Berthold, ND

BD: 1/14/14 • ASA#: 2896153 • Tattoo: 405B • ET • Open
3/4 SM 1/4 AN • Hetero Black • Homo Polled • Adj. BW: 70 • Adj. WW: 632

TJ SHARPER IMAGE 809U { DIKEMANS SURE BET
T J MISS BANDO S27

KNH MISS 58S { SRS J914 PREFERRED BEEF
KNH MAREN 32M

CE	BW	WW	YW	MCE	Milk	MWW	CW	YG	MARB	STAY	API	TI
9	1.9	74	117	14	24	61	42.6	-0.06	0.32		129	75



Lot 73

73 Rust Miss 446B



Consignor: Rust Mountain View Ranch - Mercer, ND
 BD: 1/6/14 • ASA#: 2881283 • Tattoo: 446B • ET • Open
 1/2 SM 1/2 AR • Red • Homo Polled • Adj. BW: 78 • Adj. WW: 630

KUNTZ SUPER DUTY 4Y { NCB RED SUSPECT 30S
 MISS R PLUS 7037T

BKT LARKEISA M288 CK { BECKTON COLT G552
 BKT LARKEISA D822 CB

CE	BW	WW	YW	MCE	Milk	MWW	CW	YG	MARB	STAY	API	TI
12	0.3	65	106	4	15	48	33.9	0.00	0.10		107	64

• This January, Kuntz Super Duty 4Y, open heifer is one of the very first Super Duty females to sell in the USA. Super Duty made a huge stir in Canada when he sold for \$39,000 to Canadian Sires, Deeg Simmentals and Kuntz Simmentals. His first set of offspring just hit the ground and are a great set of calves with 446B being no different. There is as much middle and mass as you can possibly put in an open heifer of this age and she sits on a great set of feet. Not only is 446B's sire a head turner but BKT Larkeisa M288 CK has also proven herself to be a donor worthy female. She is the mother of Beckton Hustler S426 C2, which is a Purebred Red Angus bull that is owned by Genex and TNT Simmentals/Red Angus. So here is a proven mating that is from the very top of our herd. Buy with confidence! 446B is documented homozygous polled. Also please check our website for videos on this unique individual at www.rustmountainviewranch.com.

75 S&L Tuition Lady B1404



Consignor: Stangeland Simmentals - Glenfield, ND
 BD: 2/4/14 • ASA#: 2880030 • Tattoo: B1404 • ET • Open
 3/4 SM 1/4 AN • Hetero Black • Homo Polled • Adj. BW: 87 • Adj. WW: 567

TNT TUITION U238 { S A V FINAL ANSWER 0035
 TNT MISS S68

TRAXS MISS FORCE Y116 { HOOKS SHEAR FORCE 38K
 C2 GUNNER 47W

CE	BW	WW	YW	MCE	Milk	MWW	CW	YG	MARB	STAY	API	TI
14	0.1	68	101	9	27	61	30.2	-0.30	0.43		145	78

• B1404 is everything we were looking for when flushing Traxs Miss Force Y116 to TNT Tuition U238. She is very feminine, well structured, and has a solid set of EPD's. This heifer will make an excellent cow and is sure to fit in anyone's herd.



Lot 76



Lot 74

74 Rust Miss 452B



Consignor: Rust Mountain View Ranch - Mercer, ND
 BD: 1/24/14 • ASA#: 2881285 • Tattoo: 452B • ET • Open
 3/4 SM 1/4 AN • Homo Black • Homo Polled • Adj. BW: 88 • Adj. WW: 740

W/C UNITED 956Y { TNT TUITION U238
 MISS WERNING 956W

TNT MISS ZADIE M30 { GW LUCKY DICE 187H
 TNT BLACK VELVET J73

CE	BW	WW	YW	MCE	Milk	MWW	CW	YG	MARB	STAY	API	TI
10	2.8	81	137	8	26	66	56.0	-0.11	0.28		125	78

• This January, United, open heifer is a heifer that will surely catch your eye on sale day. Not only is she the only United heifer that we have ever raised that has no white, but she is powerful and correct in her stature. 452B is an ET calf that comes out of one of our most proven flush cows in our herd, M30. If you are looking for a truly unique individual that is from the top of our herd, look no further because 452B is the female for you. We will have homo black and homo polled tests available on 452B sale day. Also please check our website for videos on this unique individual at www.rustmountainviewranch.com.



Lot 75

76 XXX Baileys Sparks 403B

Consignor: Braden Bailey - Towner, ND

BD: 2/5/14 • ASA#: 2902539 • Tattoo: 403B • Open
 3/4 SM 1/4 AN • Black • Polled • Adj. BW: 88 • Adj. WW: 613

SS/PRS HIGH VOLTAGE 244X { HTP/SVF DURACELL T52
 KENCO MILEY COTTONTAIL

11Z { WS A STEP UP X27
 11

CE	BW	WW	YW	MCE	Milk	MWW	CW	YG	MARB	STAY	API	TI
11	1.1	71	97	8	20	55	28.4	-0.21	0.27	16.1	124	75

• 403B is the first calf from a beautiful Step Up x Angus dam. Incredible depth of body, very bold sprung in her rib cage, excellent muscle pattern, big footed, and moves just like you want. Oh and did I mention hair!! She has a very exciting future ahead of her.

77 Sys Elsa B32



Consignor: Sys Simmentals - Douglas, ND

BD: 2/11/14 • ASA#: 2901565 • Tattoo: B32 • Open
1/2 SM 1/2 AN • Black • Polled • Adj. BW: 74

TJ SHARPER IMAGE 809U

DIKEMANS SURE BET
T J MISS BANDO S27

SYS MS TRAVELER Y40

S A V 8180 TRAVELER 004
KS KYLIE M128

CE	BW	WW	YW	MCE	Milk	MWW	CW	YG	MARB	STAY	API	TI
10	1.3	73	116	14	20	57	41.0	0.01	0.35		129	74

• Here's an attractive, second generation, half blood heifer. She comes from a super maternal cow family with sires including 004, 600U, and Full Figures. Elsa looks like a nice junior project that will make a cow when she's done showing.



Lot 79



Lot 80



Lot 81

78 Sys Anna B61



Consignor: Sys Simmentals - Douglas, ND

BD: 2/19/14 • ASA#: 2901566 • Tattoo: B61 • Open
3/4 SM 1/4 AR • Red • Polled • Adj. BW: 81

WS BEEF KING W107

WS BEEF MAKER R13
WS MISS DREAMBOAT T17

SYS PRESIOUS W941

RED SIX MILE SAKIC 832S
SYS WINCHESTER T760

CE	BW	WW	YW	MCE	Milk	MWW	CW	YG	MARB	STAY	API	TI
11	1.6	78	104	14	21	60	32.9	-0.30	0.15		129	73

• Anna has been a standout powerhouse female since she was born. This spring she was the calf we looked for every time we were in the lot. She is super powerful, moderate framed, with that perfect cherry red coat. Lots of maternal ability in this family. We sold a half sib, bred heifer by Top Gun in the Stanley sale two years ago to TNT Simmental. Buy with confidence here!

79 BCLR Miss United B414



Consignor: Bichler Simmentals - Linton, ND

BD: 2/17/14 • ASA#: (2902486) • Tattoo: B414 • Open
1/2 SM 1/2 AN • Black • Polled • Adj. BW: 75 • Adj. WW: 684

W/C UNITED 956Y

TNT TUITION U238
MISS WERNING 956W

KS MISS 004 X296

S A V 8180 TRAVELER 004
KS MORGAN M9

CE	BW	WW	YW	MCE	Milk	MWW	CW	YG	MARB	STAY	API	TI
14	-0.7	75	125	9	24	62	43.7	-0.06	0.45		144	82

• What a looker! This heifer is definitely one of the best we have ever consigned to this sale. She has a great deal of potential in the show ring, but would also be a great addition to your donor pen! Her outcross pedigree is full of donor cows on both the top and bottom sides. Homo Black and will be tested for Homo Polled by sale day!

80 KRJ Lady Ranger B479



Consignor: Double J Farms - Garretson, SD

BD: 2/21/14 • ASA#: 2898241 • Tattoo: B479 • Open
1/2 SM 1/2 AN • Homo Black • Polled • Adj. BW: 95 • Adj. WW: 770

LRS RANGE BOSS 901Z

KOCH LC MONTE 803U
LRS MS FINAL ANSWER 901W

DOUBLE J MISS U810S

ELLINGSON BLACKPERFECTOR
DOUBLE J MISS K017

CE	BW	WW	YW	MCE	Milk	MWW	CW	YG	MARB	STAY	API	TI
10	2.7	73	112	6	23	59	40.4	-0.12	0.48		124	76

• Lady Ranger is a powerful constructed, yet feminine, extremely long, yet soft, easy keeping out-cross genetic package with eye appeal. Will have a great show career and then go on to be a front pasture type of cow. WW ratio of 109. Video available at www.doublejsimmentals.com.

81 BRKC Bonita B820



Consignor: Rocky Knoll Cattle - Highmore, SD

BD: 2/23/14 • ASA#: (2891585) • Tattoo: B820 • ET • Open
3/4 SM 1/4 AN • Black • Polled • Adj. BW: 83 • Adj. WW: 647

BF MR CONFIDENCE

SVF STEEL FORCE S701
BF GCC 5918

TRIPLE C QUEENS SUPREME

CCR AMERITRADE 155J
TRIPLE C CRAZY QUEEN L98

CE	BW	WW	YW	MCE	Milk	MWW	CW	YG	MARB	STAY	API	TI
9	1.1	65	97	5	22	55	29.2	-0.17	0.02		103	63

• This heifer is a nicely put together female that has rib, bone and femininity. She moves with fluidity and puts together the pieces to make a great cow or youth project.



Lot 82

83 HSR Ms Olie B612



Consignor: Hansen Simmental Ranch - Ryder, ND

BD: 3/7/14 • ASA#: 2896531 • Tattoo: B612 • Open
3/4 SM 1/4 AN • Black • Polled • Adj. BW: 96 • Adj. WW: 692

DKSR MR OLIE X4

ELLINGSON LEGACY M229
SRS U101

HSR MS TOUCHDOWN Z774

PVF 6S17 HY TOUCHDOWN
HSR MISS DECATUR P12

CE	BW	WW	YW	MCE	Milk	MWW	CW	YG	MARB	STAY	API	TI
11	0.8	60	98	11	28	58	29.8	-0.31	0.29		129	69

• MS Olie is a fancy heifer that will show and then come back to the cow herd and make an impact. Disposition on this heifer is second to none we have shown her this fall and she has a great attitude for a young Junior interested in showing. The cow side of the pedigree is rock solid. Make sure to look this heifer up and make your own decision; you won't be disappointed.



Lot 84

85 GF F B04 Miss Bebe



Consignor: Gregg Family Simmental - Eureka, SD

BD: 3/24/14 • ASA#: 2901919 • Tattoo: B04 • Twin • Open
3/4 SM 1/4 AN • Black • Polled • Adj. BW: 68

MR HOC BROKER

SVF STEEL FORCE S701
JM BF H25

GFI MISS HOMER T7014

P A R HOMER 32
GFI AMANDA R5043

CE	BW	WW	YW	MCE	Milk	MWW	CW	YG	MARB	STAY	API	TI
6	2.8	59	97	10	20	50	32.4	-0.22	-0.02		94	56

• Here is a very fancy, Broker heifer who is a twin. Chance has shown her very successfully this Fall where she was named reserve Simmental heifer at Western Junior Livestock and at the Hand County Show. Extremely gentle; will be very competitive next summer and go on to make a great cow.

82 BNC Ms Upgrade 4005B



Consignor: BNC Livestock - Clarissa, MN

BD: 2/25/14 • ASA#: 2886976 • Tattoo: 4005B • Open
1/2 SM 1/4 AN 1/4 CS • Black • Polled • Adj. BW: 78

MR NLC UPGRADE U8676

ELLINGSON LEGACY M229
MS NLC MOJO S6119 B

11

CE	BW	WW	YW	MCE	Milk	MWW	CW	YG	MARB	STAY	API	TI
9	2.3	75	108	9	26	63	37.0	-0.38	0.33		125	76

• Take a look at this deep-bodied, feminine type of a heifer. She has the power to raise herd bulls for anyone. She is out of the great Upgrade bull, which needs no introduction. Her granddam was purchased in the Wilkinson production sale, so you know her pedigree will work for anyone. Don't forget to take a look at her.



Lot 83

84 BRKC Bella B500



Consignor: Rocky Knoll Cattle - Highmore, SD

BD: 3/23/14 • ASA#: (2891584) • Tattoo: B500 • ET • Open
1/2 SM 1/2 AN • Black • Polled • Adj. BW: 89 • Adj. WW: 770

S A V BISMARCK 5682

G A R GRID MAKER
S A V ABIGALE 0451

AJE/HS/MBCCHOPES WHISPER

SAND RANCH HAND
JF EBONYS JOY 479P

CE	BW	WW	YW	MCE	Milk	MWW	CW	YG	MARB	STAY	API	TI
18	-2.4	59	91	13	27	57	20.6	-0.38	0.46		159	76

• A fancy heifer with capacity and femininity. She is out of one of our donor cows purchased from Hilbrands Simmentals. Bella is free moving and big-ribbed. This halfblood heifer will have maternal capabilities to make progeny that will excel in the show ring and the feedlot.



Lot 85



CNS Dream On L186 - Reference Grandsire

86 XXX Baileys Annie 426B

Consignor: Braden Bailey - Towner, ND

BD: 4/7/14 • ASA#: 2902540 • Tattoo: 426B • Open
1/2 SM 1/2 AN • Black • Polled • Adj. BW: 79 • Adj. WW: 625

WS PILGRIM H182U

{ CNS DREAM ON L186
{ WS MARLA 276M

SUNSET JIPSEY 210

{ BUFFALOS CONCLUSIVE BN46
{ SUNSET JIPSEY 133

CE	BW	WW	YW	MCE	Milk	MWW	CW	YG	MARB	STAY	API	TI
10	0.5	59	89	7	17	47	23.8	-0.19	0.36		120	67

• 426B is out of a purebred Angus cow I bought in Iowa. She's moderate, big bellied, good footed, excellent in her movement, and has good straight hair. 426B will be a front pasture matron for sure!



W/C United 956Y - Reference Sire

87 RRS United B03



Consignor: Schmidt Simmentals - Center, ND

BD: 3/4/14 • ASA#: 2879320 • Tattoo: B03 • Open
3/4 SM 1/4 AN • Black • Polled • Adj. BW: 92

W/C UNITED 956Y

{ TNT TUITION U238
{ MISS WERNING 956W

BCLR MISS VEGAS Z222

{ CDI VEGAS 26X
{ BCLR MISS LUMPY X02

CE	BW	WW	YW	MCE	Milk	MWW	CW	YG	MARB	STAY	API	TI
13	0.7	81	128	10	26	67	46.8	-0.16	0.32		141	82

• Show prospect. Moderate with all kinds of rib. Very correctly designed and sound as a cat.



Triple C Ultimate Force - Reference Grandsire

88 GFF B35 Miss Bobbie



Consignor: Gregg Family Simmental - Eureka, SD

BD: 6/2/14 • ASA#: 2901921 • Tattoo: B35 • Open
3/4 SM 1/8 AR 1/8 CS • Red • Polled • Adj. BW: 75

AJE/HS/MBCC CASANOVA W4

{ STF MONTANA BLACK KF25
{ JF EBONYS JOY 479P

X12

{ TRIPLE C ULTIMATE FORCE
{ 216

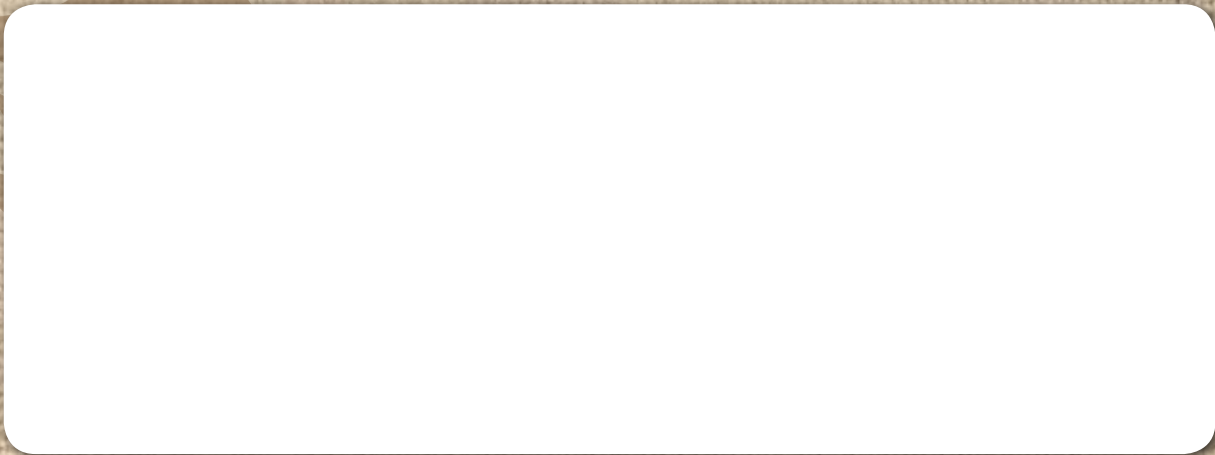
CE	BW	WW	YW	MCE	Milk	MWW	CW	YG	MARB	STAY	API	TI
9	1.1	57	77	5	22	50	16.7	-0.31	0.12	15.9	109	63

• She is a young, red, open heifer out of our exciting herd sire purchased from Hilbrands Simmentals. He is a full brother to the very popular donor cow, Hope Floats, at Tingle Farms. Our calves out of him have had that extra rib shape and quiet dispositions.

Notes...



NDSA
440 6th Ave SE
Leeds, ND 58346



Please bring this catalog with you to the sale!

North
Dakota
Simmental
Association

**Classic
SALE**

Saturday, December 13, 2014 | 2:00 pm (approx.)

Kist Livestock, Mandan, ND

Sale Immediately Follows the

ND Red Angus Select Sale | Noon CST